

GOLDSBORO, NORTH CAROLINA

ILS or LOC Y RWY 26

LOC I-DDX 109.9	APCH CRS 261°	Rwy ldg 11,760 TDZE 109 Arprt Elev 109
---------------------------	-------------------------	---

[USAF]

SEYMOUR JOHNSON AFB (KGSB)

RADAR or DME required



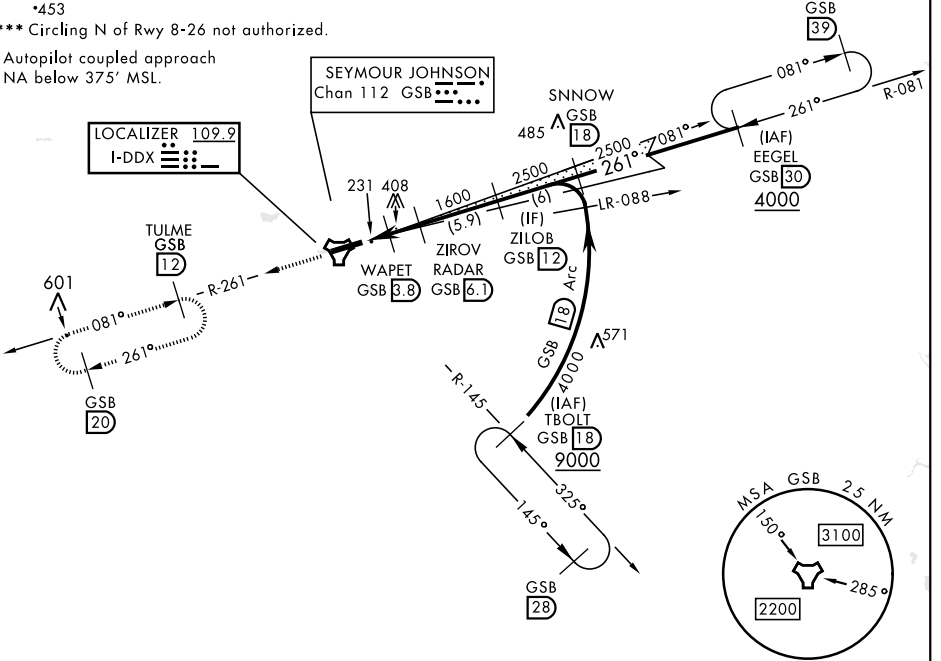
MISSED APPROACH: Climb to 2200 via GSB TACAN R-261 to TULME and hold.

▼ * When ALS inop, increase RVR to 40 and vis to 3/4 mile.
 ** When ALS inop, increase CAT AB RVR to 55 and vis to 1 mile, CAT CDE RVR to 60 and vis to 1 1/2 miles.

ATIS ★ 317.625	APP CON 123.7 290.9 (258°-110°) 119.7 273.6 (111°-257°)	TOWER ★ 126.25 370.875	GND CON 132.45 275.8	CLNC DEL 128.025 270.8
--------------------------	---	----------------------------------	--------------------------------	----------------------------------

*453
 *** Circling N of Rwy 8-26 not authorized.

Autopilot coupled approach
NA below 375' MSL.



SE-2, 28 NOV 2024 to 26 DEC 2024

SE-2, 28 NOV 2024 to 26 DEC 2024

EMERG SAFE ALT 100 NM 3700

ELEV 109	TDZE 109	2200 GSB R-261	TULME R-261 12																							
<p>HIRL Rwy 8-26 FAF to MAP 4 NM Knots: 60, 90, 120, 150, 180 Min:Sec: 4:00, 2:40, 2:00, 1:36, 1:20</p>		<p>Profile view showing altitudes: 215 TWR, 176, 261°, 11760 x 300, 0.3% DOWN, 261°, 176, 261°, 1600, 2500, 1880, 1600, 261°, 2500, GS 3.00° TCH 54</p>																								
				<table border="1"> <tr> <th>CATEGORY</th> <th>A</th> <th>B</th> <th>C</th> <th>D</th> <th>E</th> </tr> <tr> <td>S-ILS 26*</td> <td colspan="5">309/24</td> </tr> <tr> <td>S-LOC 26**</td> <td>500/24</td> <td>391 (400-1/2)</td> <td>200</td> <td colspan="2">391 (400-3/4)</td> </tr> </table>					CATEGORY	A	B	C	D	E	S-ILS 26*	309/24					S-LOC 26**	500/24	391 (400-1/2)	200	391 (400-3/4)	
CATEGORY	A	B	C	D	E																					
S-ILS 26*	309/24																									
S-LOC 26**	500/24	391 (400-1/2)	200	391 (400-3/4)																						
		<p>*** CIRCLING</p>		580-1 471 (500-1)	600-1 491 (500-1)	680-1 1/2 571 (600-1 1/2)	740-2 631 (700-2)	740-2 1/4 631 (700-2 1/4)																		

GOLDSBORO, NORTH CAROLINA

35°20'N-77°58'W

SEYMOUR JOHNSON AFB (KGSB)

Amdt 9 03NOV22

ILS or LOC Y RWY 26