

GOLDSBORO, NORTH CAROLINA

# RNAV (GPS) RWY 26

WAAS CH <b>95096</b> <b>W26A</b>	APCH CRS <b>261°</b>	Rwy ldg TDZE Arprt Elev	<b>11,760</b> <b>109</b> <b>109</b>
--	-------------------------	-------------------------------	---

- (USAF)

SEYMOUR JOHNSON AFB (KGSB)

RNP APCH-GPS

▼ \* When ALS inop, increase RVR to 40, vis to 3/4 mile.  
 \*\* When ALS, inop increase RVR to 60, vis to 1 1/8 miles.

ALS-F1



MISSSED APPROACH: Climb to 2200 direct RITIE and hold.

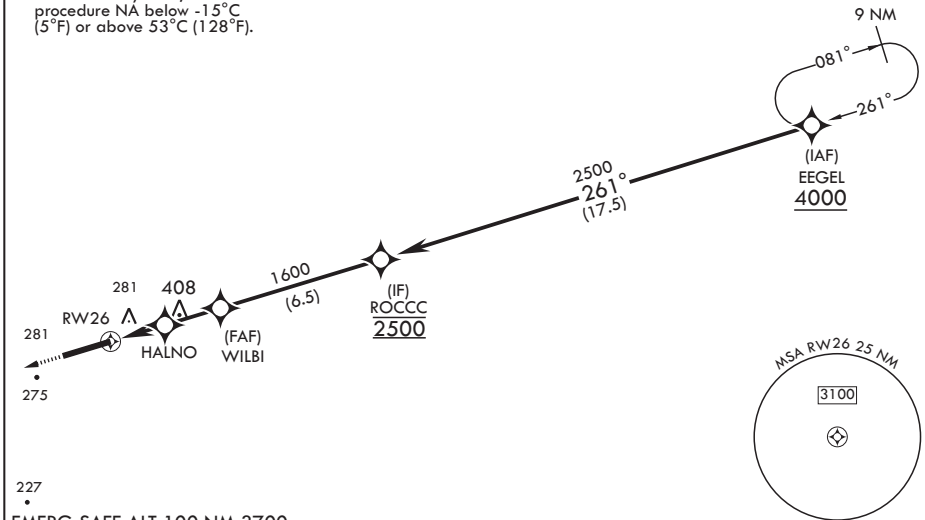
ATIS★ <b>317.625</b>	APP CON <b>119.7 273.6</b> (111° -257°) <b>123.7 290.9</b> (258° -110°)	TOWER★ <b>126.25 370.875</b>	GND CON <b>132.45 275.8</b>	CLNC DEL <b>128.025 270.8</b>
-------------------------	---	---------------------------------	--------------------------------	----------------------------------

\*\*\* When ALS inop, increase CAT  
 AB RVR to 55, vis to 1 mile;  
 CAT CDE vis to 1 1/4 miles.  
 \*\*\*\* Circling NA N of Rwy 8-26.

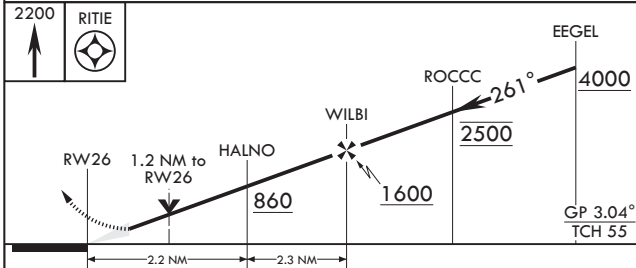
MISSSED APPROACH



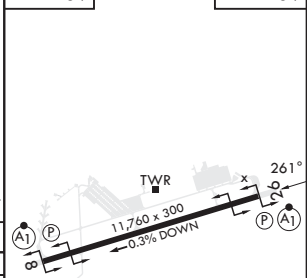
For uncompensated  
 Baro-VNAV systems,  
 procedure NA below -15°C  
 (5°F) or above 53°C (128°F).



EMERG SAFE ALT 100 NM 3700



ELEV 109 TDZE 109



CATEGORY	A	B	C	D	E
LPV DA*	309/24		200	(200-1/2)	
LNAV/VNAV DA**	510/40		401	(500-3/4)	
LNAV MDA***	540/24	431 (500-1/2)	540/40	431	(500-3/4)
C CIRCLING****	580-1	600-1	680-1 1/2	740-2	740-2 1/4
	471 (500-1)	491 (500-1)	571 (600-1 1/2)	631 (700-2)	631 (700-2 1/4)

HIRL all Rwys

GOLDSBORO, NORTH CAROLINA

35°20'N - 77°58'W

SEYMOUR JOHNSON AFB (KGSB)

Amdt 6 11JUL24

# RNAV (GPS) RWY 26

SE-2, 28 NOV 2024 to 26 DEC 2024

SE-2, 28 NOV 2024 to 26 DEC 2024