

GOLDSBORO, NORTH CAROLINA

RNAV (GPS) RWY 8

WAAS CH 63600 W08A	APCH CRS 081°	Rwy ldg TDZE 73 Arprt Elev 109
---------------------------------	-------------------------	--

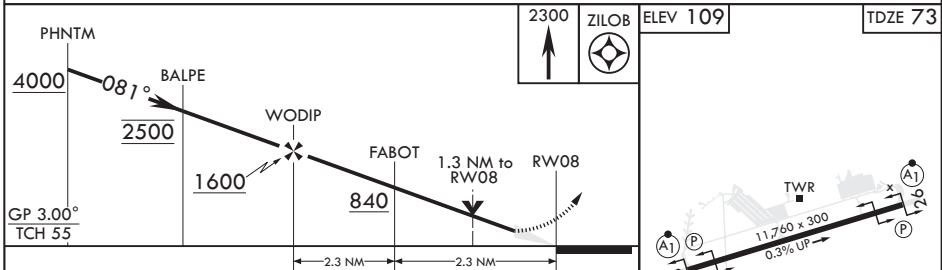
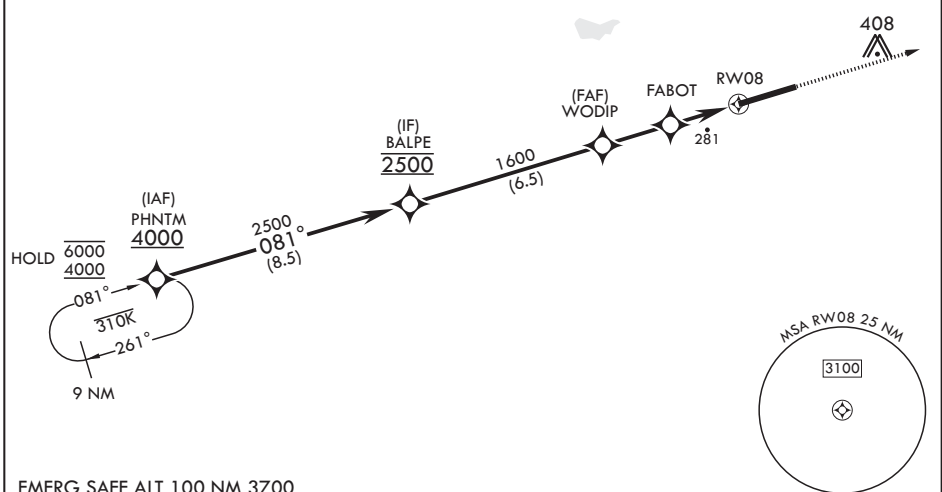
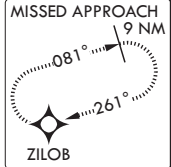
(USAF)

SEYMOUR JOHNSON AFB (KGSB)

RNP APCH-GPS	ALSF-1	MISSED APPROACH: Climb to 2300 direct ZILOB and hold.
--------------	--------	---

ATIS★ 317.625	APP CON 119.7 273.6 (111° -257°) 123.7 290.9 (258° -110°)	TOWER★ 126.25 370.875	GND CON 132.45 275.8	CLNC DEL 128.025 270.8
-------------------------	---	---------------------------------	--------------------------------	----------------------------------

319
 *** When ALS inop, increase CAT
 AB RVR to 55, vis to 1 mile;
 CAT CDE vis to 1 3/8 miles.
 **** Circling NA N of RWY 8-26.
 For uncompensated
 Baro-VNAV systems,
 procedure NA below -15°C
 (5°F) or above 54°C (130°F).



CATEGORY	A	B	C	D	E
LPV DA*	273/24		200	(200-½)	
LNAV/VNAV DA**	540/50		467	(500-1)	
LNAV MDA***	540/24	467 (500-½)	540/50	467	(500-1)
CIRCLING****	580-1	600-1	680-1½	740-2	740-2¼
	471 (500-1)	491 (500-1)	571 (600-½)	631 (700-2)	631 (700-2¼)

GOLDSBORO, NORTH CAROLINA 35°20'N - 77°58'W SEYMOUR JOHNSON AFB (KGSB)

Amdt 7 11JUL24 **RNAV (GPS) RWY 8**

SE-2, 28 NOV 2024 to 26 DEC 2024

SE-2, 28 NOV 2024 to 26 DEC 2024