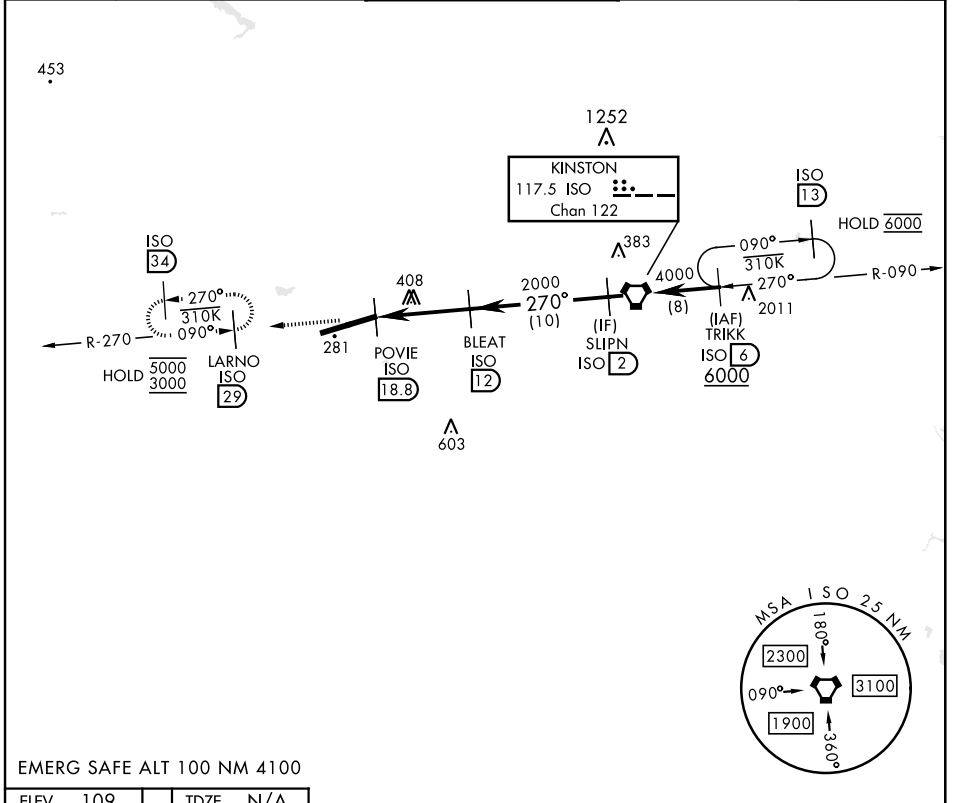


TACAN-A

KINSTON ISO 117.5 Chan 122	APCH CRS 270°	Rwy Idg TDZE Arprt Elev N/A N/A 109	[USAF]	SEYMOUR JOHNSON AFB (KGSB)
--	-------------------------	---	--------	----------------------------

▼ Circling not authorized from Rwy 8 clockwise to RWY 26.
 MISSED APPROACH: Climb to 3000 via ISO VORTAC R-270 to LARNO and hold; continue climb-in-hold to 3000.

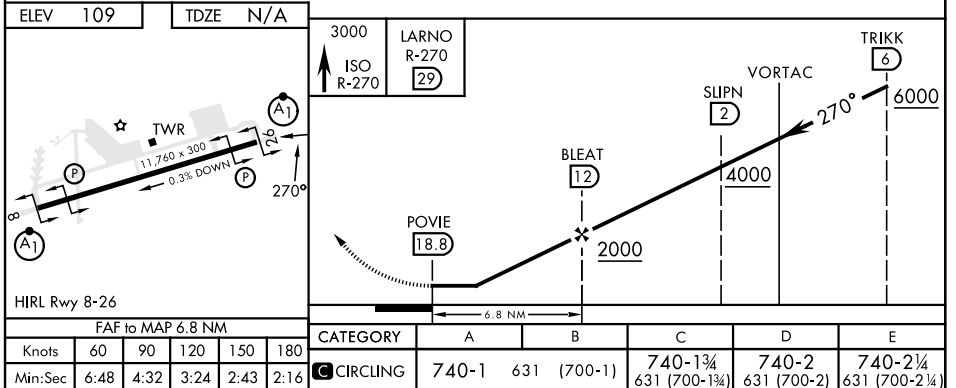
ATIS ★ 317.625	APP CON 123.7 290.9 (258°-110°) 119.7 273.6 (111°-257°)	TOWER ★ 126.25 370.875	GND CON 132.45 275.8	CLNC DEL 128.025 270.8
--------------------------	---	----------------------------------	--------------------------------	----------------------------------



SE-2, 28 NOV 2024 to 26 DEC 2024

SE-2, 28 NOV 2024 to 26 DEC 2024

EMERG SAFE ALT 100 NM 4100



TACAN-A