


LOC I-GRI 111.9	APP CRS 173°	Rwy Idg 7002 TDZE 1844 Apt Elev 1847
---------------------------	------------------------	---

LOC/DME BC RWY 17

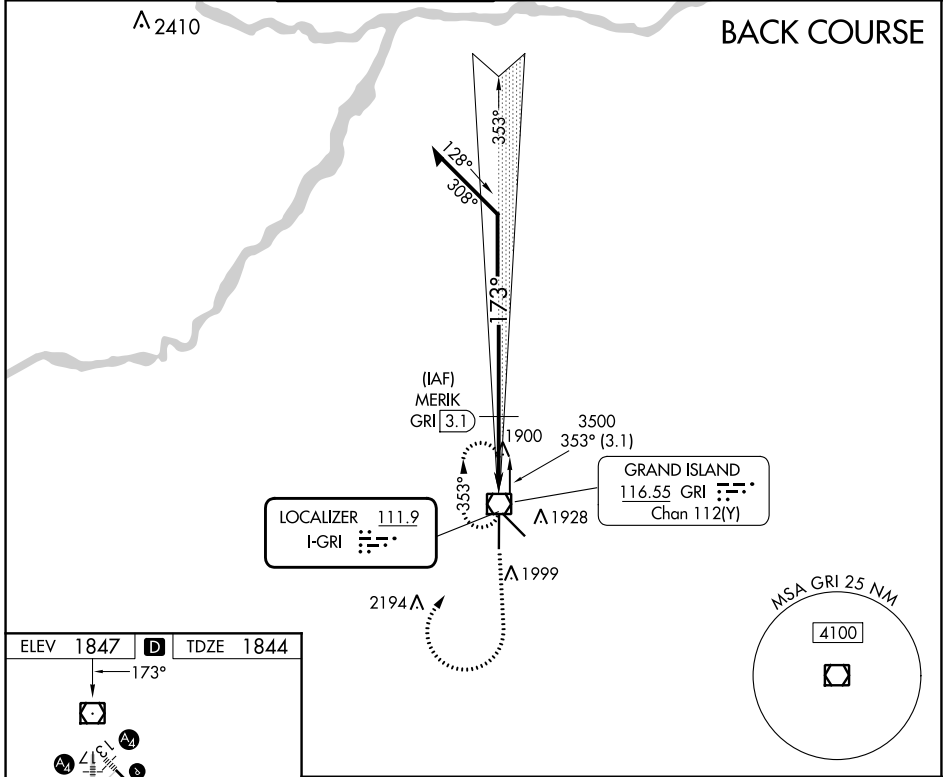
CENTRAL NEBRASKA RGNL (GRI)

Simultaneous reception of I-GRI and GRI DME required. When local altimeter setting not received, use Aurora altimeter setting and increase all MDA 60 feet, and S-17 Cat D visibility ¼ SM and Circling Cat C/D visibility ¼ SM.

MALS 

MISSED APPROACH: Climb to 3700 on heading 170° then right turn direct GRI VOR/DME and hold.

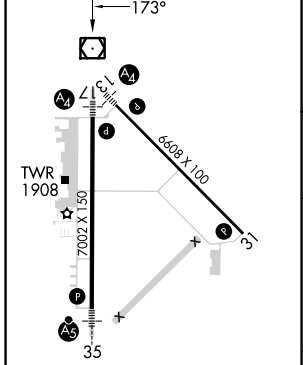
ATIS 127.4	MINNEAPOLIS CENTER 119.4 278.8	GRAND ISLAND TOWER * 118.2 (CTAF) 259.3	GND CON 121.9 259.3	CLNC DEL 121.9	CLNC DEL 126.05 (when twr closed)	UNICOM 122.95
----------------------	--	---	-------------------------------	--------------------------	--	-------------------------



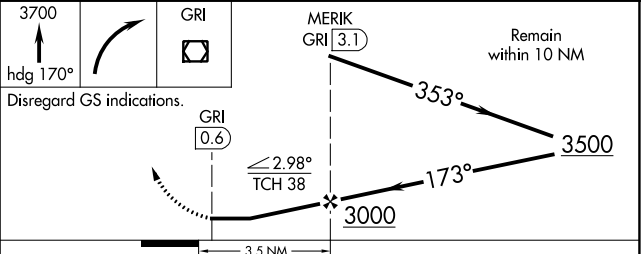
NC-2, 28 NOV 2024 to 26 DEC 2024

NC-2, 28 NOV 2024 to 26 DEC 2024

ELEV 1847	D	TDZE 1844
------------------	----------	------------------



MIRL Rwy 13-31	HIRL Rwy 17-35	REIL Rwy 31
----------------	----------------	-------------



CATEGORY	A	B	C	D
S-17	2160-¾ 316 (400-¾)		2160-1 316 (400-1)	
CIRCLING	2300-1	453 (500-1)	2400-1½ 553 (600-1½)	2560-2¼ 713 (800-2¼)