

VOR/DME GRI <b>116.55</b> Chan <b>112</b> (Y)	APP CRS <b>104°</b>	Rwy Idg TDZE Apt Elev <b>6608</b> <b>1842</b> <b>1847</b>
---	------------------------	--

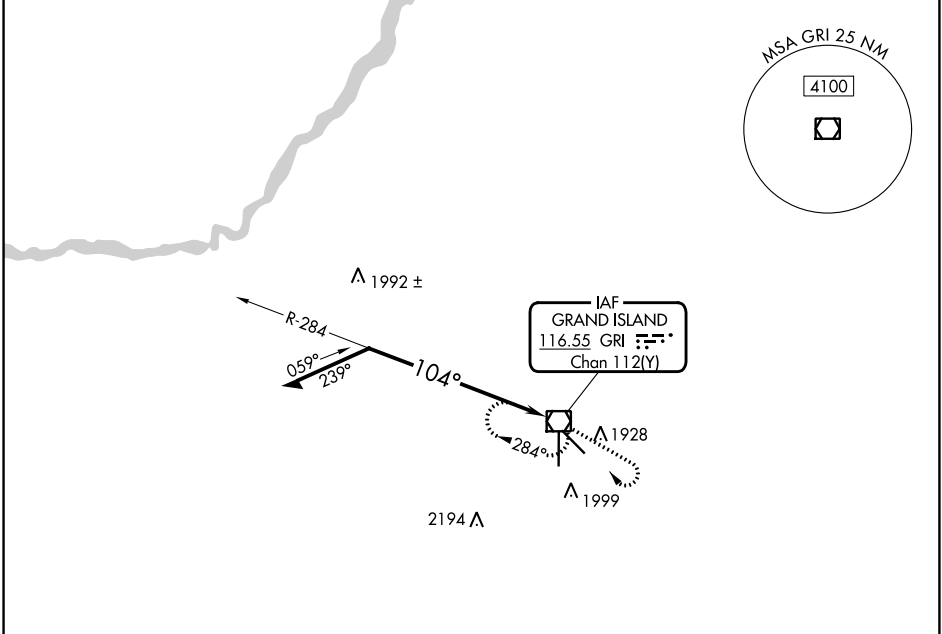
# VOR RWY 13

CENTRAL NEBRASKA RGNL (GRI)

**⚠** When local altimeter setting not received, use Aurora altimeter setting and increase all MDA 60 feet, increase S-13 Cats C/D and Circling Cats C/D visibility ¼ SM. Inop table does not apply to S-13 Cat C.

**MALS** MISSED APPROACH: Climb to 3600, then right turn direct GRI VOR/DME and hold.

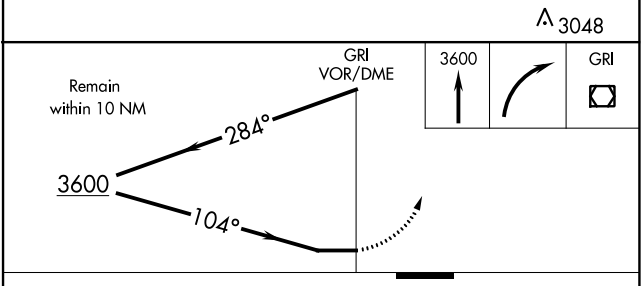
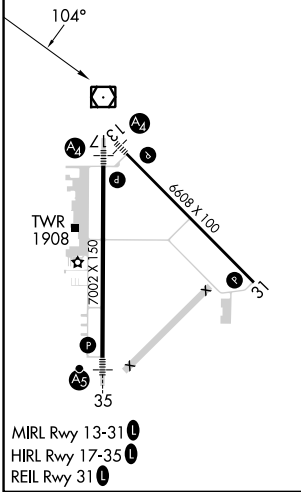
ATIS <b>127.4</b>	MINNEAPOLIS CENTER <b>119.4 278.8</b>	GRAND ISLAND TOWER * <b>118.2</b> (CTAF) <b>0 259.3</b>	GND CON <b>121.9 259.3</b>	CLNC DEL <b>121.9</b>	CLNC DEL <b>126.05</b> (when twr closed)	UNICOM <b>122.95</b>
----------------------	--	--	-------------------------------	--------------------------	--	-------------------------



NC-2, 28 NOV 2024 to 26 DEC 2024

NC-2, 28 NOV 2024 to 26 DEC 2024

ELEV 1847	<b>D</b>	TDZE 1842
-----------	----------	-----------



CATEGORY	A	B	C	D
S-13	2300-¾ 458 (500-¾)		2300-1¼ 458 (500-1¼)	2300-1½ 458 (500-1½)
CIRCLING	2300-1 453 (500-1)		2400-1½ 553 (600-1½)	2560-2¼ 713 (800-2¼)