

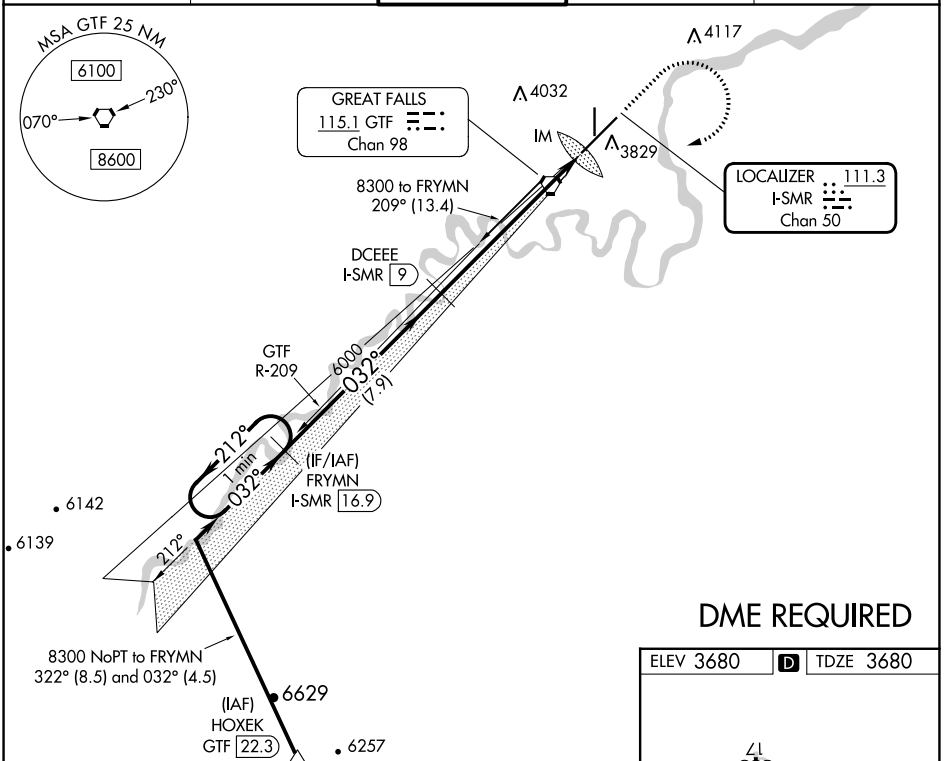
LOC/DME I-SMR 111.3 Chan 50	APP CRS 032°	Rwy Idg 10502 TDZE 3680 Apt Elev 3680
--	------------------------	--

ILS RWY 3 (SA CAT I)

GREAT FALLS INTL (GTF)

<p>Requires specific OPSPEC, MSPEC, or LOA approval and use of HUD to DH. DME required.</p>	<p>ALSIF-2</p>	<p>MISSED APPROACH: Climb to 5000 then climbing right turn to 8300 direct GTF VORTAC then on GTF VORTAC R-209 to FRYMNI/I-SMR 16.9 DME and hold.</p>

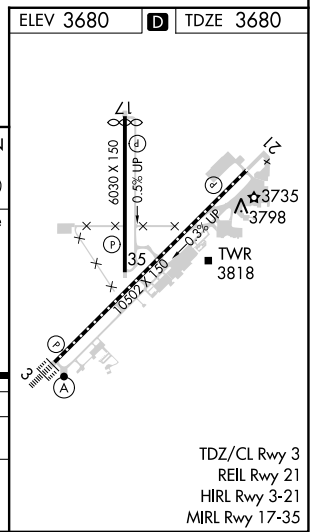
ATIS 126.6 269.0	GREAT FALLS APP CON 128.6 379.175	GREAT FALLS TOWER 118.7 282.2	GND CON 121.7 348.6	CLNC DEL 121.7 348.6
----------------------------	---	---	-------------------------------	--------------------------------



NW-1, 28 NOV 2024 to 26 DEC 2024

NW-1, 28 NOV 2024 to 26 DEC 2024

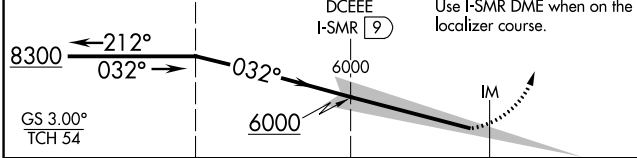
DME REQUIRED



VGSI and ILS glidepath not coincident (VGSI Angle 3.00/TCH 70).
One Minute Holding Pattern FRYMNI I-SMR 16.9

5000	8300	GTF	GTF R-209	FRYMNI I-SMR 16.9
------	------	-----	-----------	-------------------

DCEEE I-SMR 9 Use I-SMR DME when on the localizer course.



CATEGORY	A	B	C	D
5-ILS 3	RA 140/14 150 DA 3830			

SA CATEGORY I ILS-SPECIAL AIRCREW & AIRCRAFT CERTIFICATION REQUIRED

TDZ/CL Rwy 3
REIL Rwy 21
HIRL Rwy 3-21
MIRL Rwy 17-35