

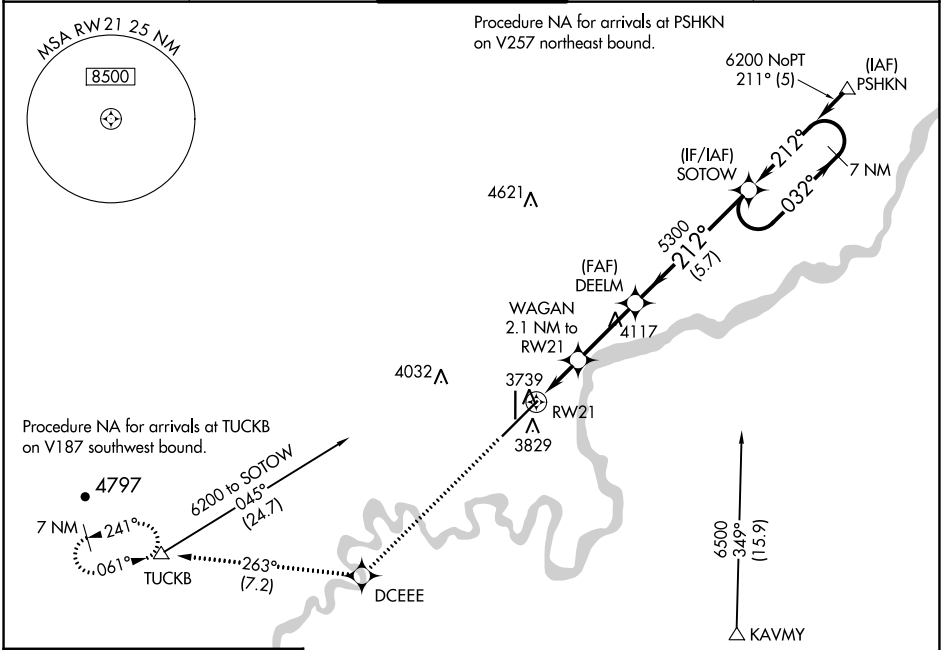
WAAS CH <b>90221</b> <b>W21A</b>	APP CRS <b>212°</b>	Rwy Idg <b>10502</b> TDZE <b>3669</b> Apt Elev <b>3680</b>
--	------------------------	--

# RNAV (GPS) Y RWY 21

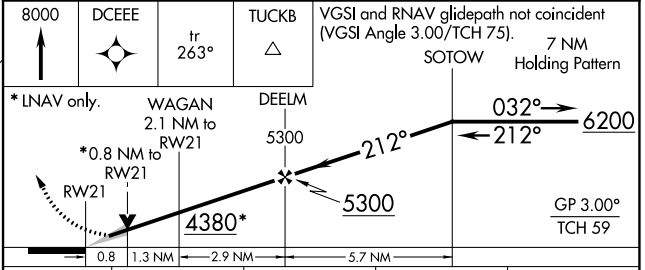
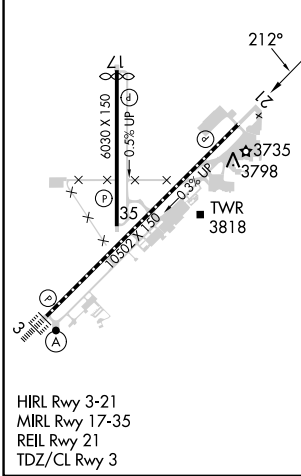
GREAT FALLS INTL (GTF)

RNP APCH - GPS.	MISSED APPROACH: Climb to 8000 direct DCEEE and on track 263° to TUCKB and hold, continue climb-in-hold to 8000.
<p>▼ For uncompensated Baro-VNAV systems, LNAV/VNAV NA below -24°C or above 49°C.</p> <p>▲</p>	

ATIS <b>126.6 269.0</b>	GREAT FALLS APP CON <b>128.6 379.175</b>	GREAT FALLS TOWER <b>118.7 282.2</b>	GND CON <b>121.7 348.6</b>	CLNC DEL <b>121.7 348.6</b>
----------------------------	---	---	-------------------------------	--------------------------------



ELEV 3680	<b>D</b>	TDZE 3669
-----------	----------	-----------



CATEGORY	A	B	C	D
LPV DA		3869/40	200 (200-3/4)	
LNAV/VNAV DA		3927/45	258 (300-7/8)	
LNAV MDA	4000/55	331 (400-1)	4000/50	331 (400-1)
<b>C</b> CIRCLING	4140-1	460 (500-1)	4340-1 3/4 660 (700-1 3/4)	4420-2 1/4 740 (800-2 1/4)

NW-1, 28 NOV 2024 to 26 DEC 2024

NW-1, 28 NOV 2024 to 26 DEC 2024