

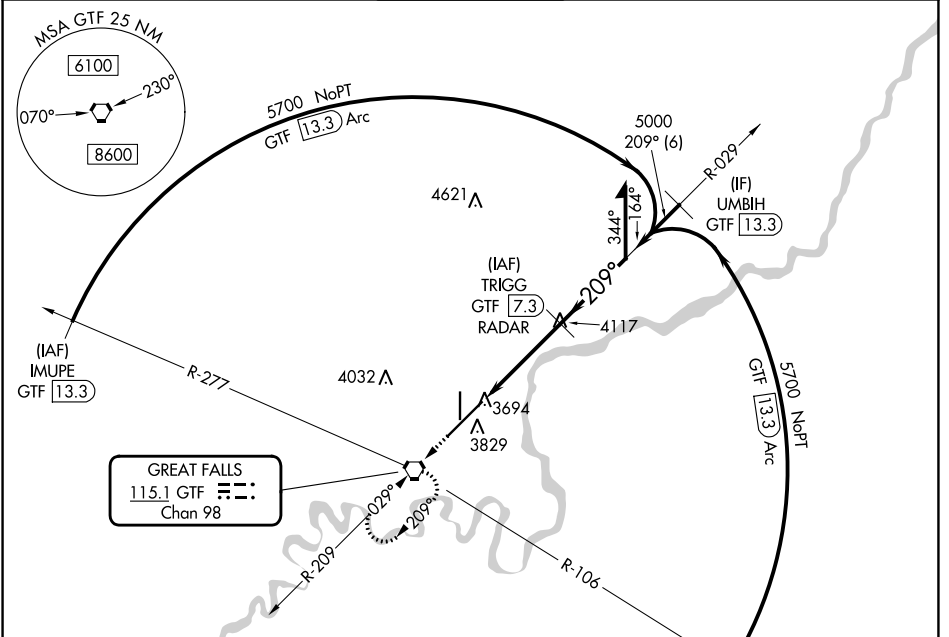
VORTAC GTF 115.1 Chan 98	APP CRS 209°	Rwy Idg 10502 TDZE 3669 Apt Elev 3680
--	------------------------	--

VOR RWY 21

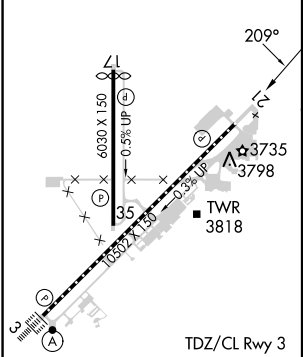
GREAT FALLS INTL (GTF)

<p>DME or RADAR required.</p>		<p>MISSED APPROACH: Climb to 8000 direct GTF VORTAC and hold, continue climb-in-hold to 8000.</p>		
--------------------------------------	--	---	--	--

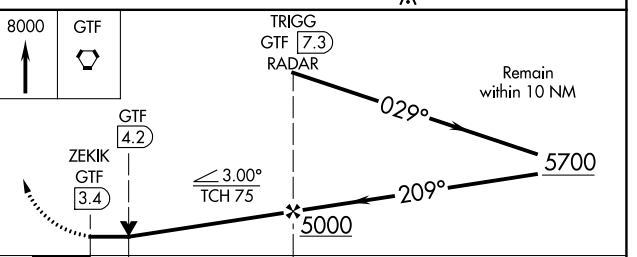
ATIS 126.6 269.0	GREAT FALLS APP CON 128.6 379.175	GREAT FALLS TOWER 118.7 282.2	GND CON 121.7 348.6	CLNC DEL 121.7 348.6
----------------------------	---	---	-------------------------------	--------------------------------



ELEV 3680	D	TDZE 3669
-----------	----------	-----------



DME or RADAR REQUIRED



TDZ/CL Rwy 3 REIL Rwy 21 HIRL Rwy 3-21 MIRL Rwy 17-35	FAF to MAP 4 NM				
Knots	60	90	120	150	180
Min:Sec	4:00	2:40	2:00	1:36	1:20
CATEGORY	A	B	C	D	
S-21	4000/55 331 (400-1)				
CIRCLING	4140-1	460 (500-1)	4340-1¾ 660 (700-1¾)	4420-2¼ 740 (800-2¼)	

NW-1, 28 NOV 2024 to 26 DEC 2024

NW-1, 28 NOV 2024 to 26 DEC 2024