


WAAS CH <b>82539</b> <b>W27A</b>	APP CRS <b>272°</b>	Rwy Idg TDZE Apt Elev	<b>5001</b> <b>629</b> <b>631</b>
--	------------------------	-----------------------------	---

AL-183 (FAA)

**RNAV (GPS) RWY 27**  
GREENWOOD COUNTY (G.R.D)

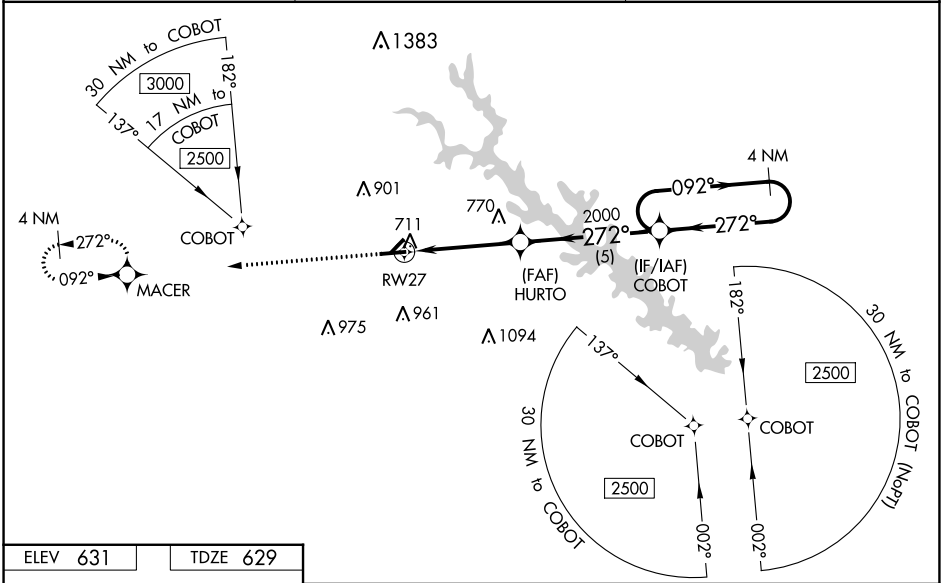
For uncompensated Baro-VNAV systems, LNAV/VNAV NA below -10°C (14°F) or above 54°C (130°F). Baro-VNAV and VDP NA when using Laurens altimeter setting.  
 DME/DME RNP-0.3 NA. Circling Rwy 5, 23 NA at night. Rwy 27 helicopter visibility reduction below 3/4 SM NA. When local altimeter setting not received, use Laurens altimeter setting: increase LPV DA to 932 feet and all visibilities 1/8 SM; increase LNAV/VNAV DA to 936 feet and all visibilities 1/8 SM; increase all MDA 60 feet and LNAV visibility Cats C and D 1/8 SM and Circling visibility Cats C and D 1/4 SM. For inop ALS, increase LNAV/VNAV all Cats visibility to 1/8 SM and LNAV all Cats visibility to 1 SM. For inop ALS when using Laurens altimeter setting, increase LPV and LNAV/VNAV all Cats and LNAV Cats A and B visibility to 1 SM and LNAV Cats C and D visibility to 1 1/8 SM.

**ODALS**  
 MISSED APPROACH: Climb to 2500 direct MACER and hold.

ASOS  
**121.125**

GREER APP CON ★  
**120.6 350.2**

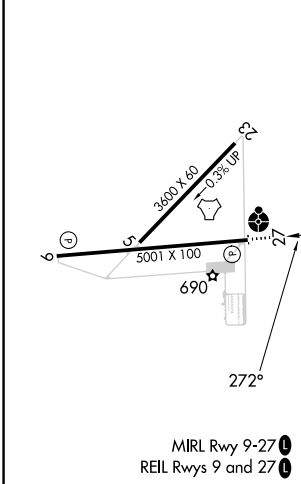
UNICOM  
**122.975 (CTAF) 0**



SE-2, 28 NOV 2024 to 26 DEC 2024

SE-2, 28 NOV 2024 to 26 DEC 2024

ELEV 631	TDZE 629
----------	----------



2500	MACER				
*LNAV only.					
RWY 27		HURTO	COBOT	4 NM Holding Pattern	
1 NM		3.2 NM	5 NM	2500	
2000		2000	272°	092°	2500
272°		272°	272°	092°	2500
GP 3.00° TCH 53					
CATEGORY	A	B	C	D	
LPV DA	879-3/4		250 (300-3/4)		
LNAV/VNAV DA	883-3/4		254 (300-3/4)		
LNAV MDA	980-3/4		351 (400-3/4)		980-7/8 351 (400-7/8)
CIRCLING	1080-1 449 (500-1)	1100-1 469 (500-1)	1320-2 689 (700-2)	1340-2 1/4 709 (800-2 1/4)	