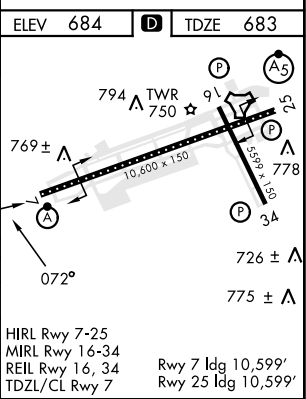
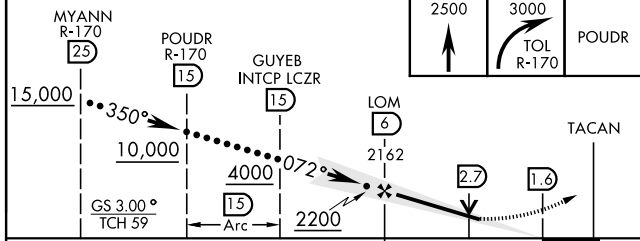
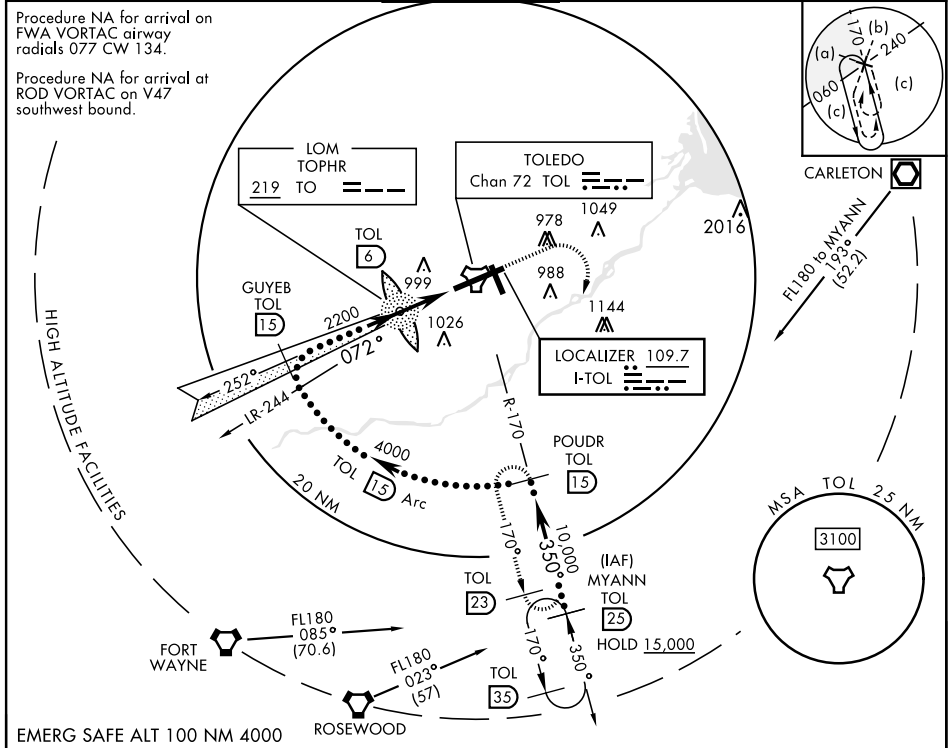


# HI-ILS Y or LOC Y RWY 7

LOC I-TOL <b>109.7</b>	APCH CRS <b>072°</b>	Rwy ldg <b>10,599</b> TDZE <b>683</b> Arpt Elev <b>684</b>	[USAF]	EUGENE F KRANZ TOLEDO EXPRESS (KTOL)
DME required			ALSF-2	MISSED APPROACH: Climb to 2500, then climbing right turn to 3000 on TOL TACAN R-170 to POWDR/ 15 DME and hold.
*When ALS inop, increase CAT E RVR to 40, vis to 3/4. **When ALS inop, increase CAT E RVR to 60, vis to 1/4.				

ATIS <b>118.75 290.225</b>	TOLEDO APP CON <b>126.1 317.55</b>	TOLEDO TOWER <b>118.1 285.4</b>	GND CON <b>121.9 348.6</b>	CLNC DEL <b>121.75 348.6</b>	ASR
-------------------------------	---------------------------------------	------------------------------------	-------------------------------	---------------------------------	-----

Procedure NA for arrival on FWA VORTAC airway radials 077 CW 134.  
 Procedure NA for arrival at ROD VORTAC on V47 southwest bound.



CATEGORY	C	D	E
S-ILS 7 *	883/18	200 (200-3/4)	
S-LOC 7 **	1080/35	397 (400-3/4)	
CIRCLING	1300-1 3/4 617 (700-1 3/4)	1400-2 1/4 717 (800-2 1/4)	1400-2 1/2 717 (800-2 1/2)

HIRL Rwy 7-25  
 MIRL Rwy 16-34  
 REIL Rwy 16, 34  
 TDZL/CL Rwy 7  
 Rwy 7 ldg 10,599'  
 Rwy 25 ldg 10,599'

# HI-ILS Y or LOC Y RWY 7

EC-2, 28 NOV 2024 to 26 DEC 2024

EC-2, 28 NOV 2024 to 26 DEC 2024