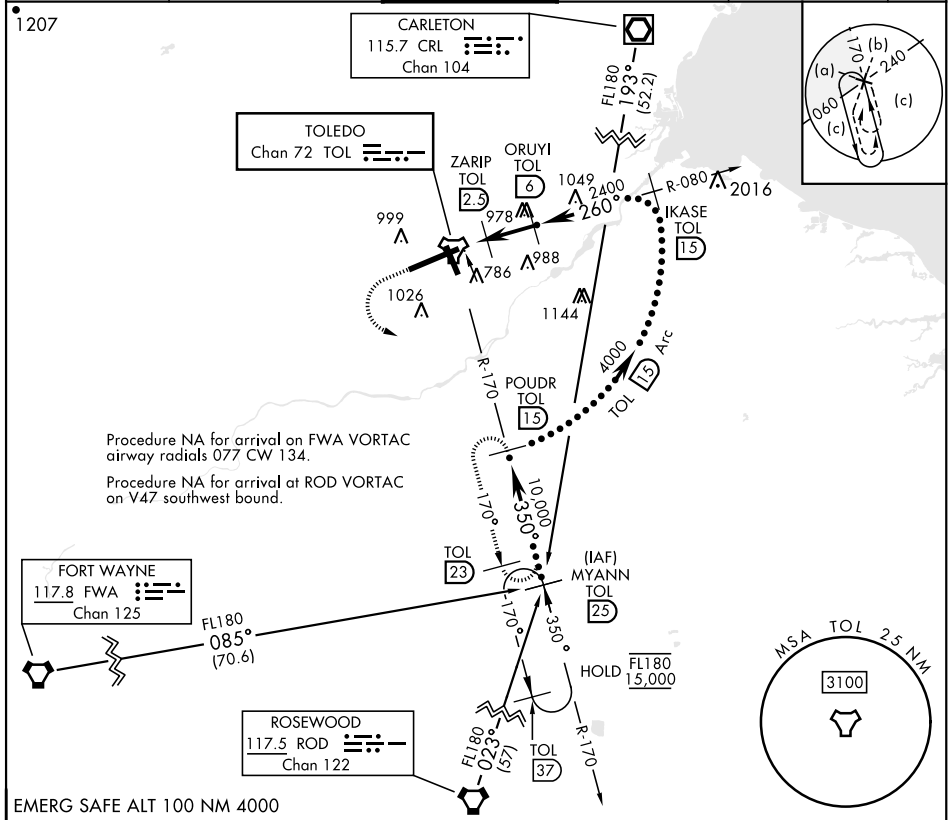


# HI-TACAN RWY 25

TACAN TOL Chan 72	APCH CRS 260°	Rwy ldg 10,599 TDZE 678 Arprt Elev 684	[USAF]	EUGENE F KRANZ TOLEDO EXPRESS (KTOL)
----------------------	------------------	--	--------	--------------------------------------

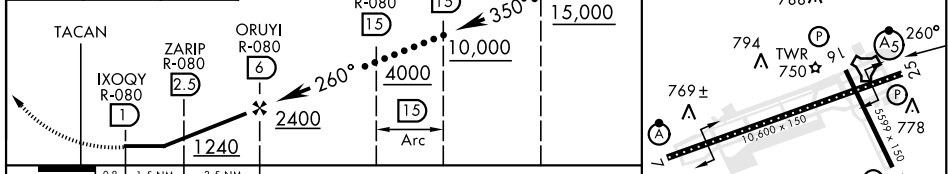
**⚠** \* When ALS inop increase CAT C vis to 1 mile. **MALSR** MISSED APPROACH: Climb to 3000 then left turn on TOL R-170 to POUDR and hold.

ATIS 118.75 290.225	TOLEDO APP CON 126.1 317.55	TOLEDO TOWER 118.1 285.4	GND CON 121.9 348.6	CLNC DEL 121.75 348.6	ASR
------------------------	--------------------------------	-----------------------------	------------------------	--------------------------	-----



Procedure NA for arrival on FWA VORTAC airway radials 077 CW 134.  
Procedure NA for arrival at ROD VORTAC on V47 southwest bound.

3000 ↑ TOL R-170	POUDR TOL 15	ELEV 684	TDZE 678
------------------------	--------------	----------	----------



CATEGORY	C	D	E
S-25 *	1040-¾ 362 (400-¾)	1040-1 362 (400-1)	
CIRCLING	1360-2 677 (700-2)	1400-2¼ 717 (800-2¼)	1400-2½ 717 (800-2½)

HIRL Rwy 7-25 726 ± A  
MIRL Rwy 16-34 778  
REIL Rwy 16, 34 775 ± A  
TDZL/CL Rwy 7

# HI-TACAN RWY 25

EC-2, 28 NOV 2024 to 26 DEC 2024

EC-2, 28 NOV 2024 to 26 DEC 2024