


LOC/DME I-BQE <b>108.7</b> Chan <b>24</b>	APP CRS <b>252°</b>	Rwy Idg <b>10599</b> TDZE <b>678</b> Apt Elev <b>684</b>
---	------------------------	--

# ILS Z or LOC Z RWY 25

EUGENE F KRANZ TOLEDO EXPRESS (TOL)

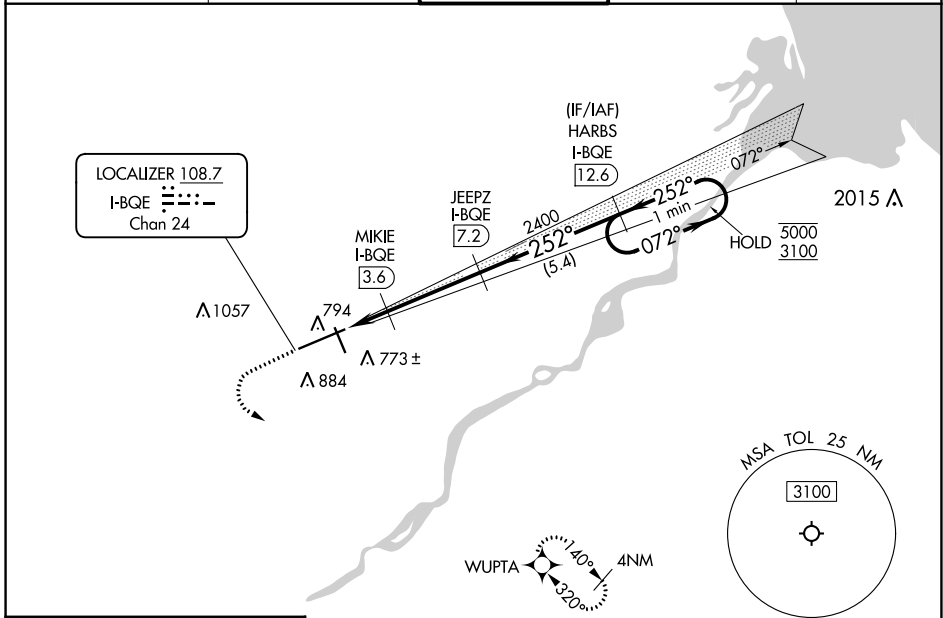
RADAR required for procedure entry. DME, RNAV 1-GPS required.

**▼** For inop ALS, increase S-ILS 25 Cat E visibility to RVR 4000, and S-LOC 25 Cat E visibility to RVR 5000.  
**▲** ASR # RVR 1800 authorized with use of FD or AP or HUD to DA.

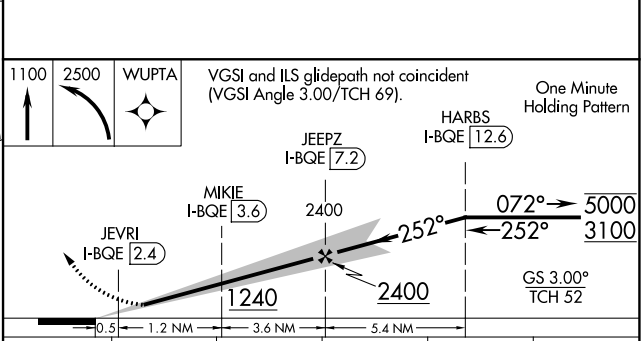
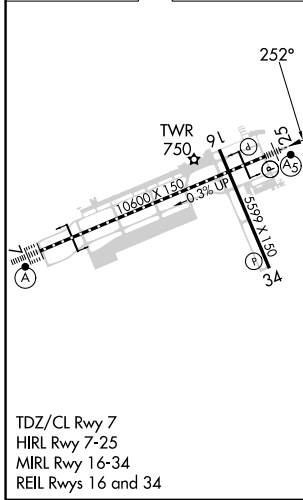
MALSR 

MISSED APPROACH: Climb to 1100 then climbing left turn to 2500 direct WUPTA and hold.

ATIS <b>118.75 290.225</b>	TOLEDO APP CON <b>134.35 317.55</b>	TOLEDO TOWER <b>118.1 285.4</b>	GND CON <b>121.9 348.6</b>	CLNC DEL <b>121.75 348.6</b>
-------------------------------	--	------------------------------------	-------------------------------	---------------------------------



ELEV <b>684</b>	<b>D</b>	TDZE <b>678</b>
-----------------	----------	-----------------



CATEGORY	A	B	C	D	E
S-ILS 25 #	878/24 200 (200-½)				
S-LOC 25	1000/24	322 (400-½)	1000/26	322 (400-½)	
<b>C</b> CIRCLING	1200-1	516 (600-1)	1300-1¾ 616 (700-1¾)	1360-2¼ 676 (700-2¼)	1360-2½ 676 (700-2½)

EC-2, 28 NOV 2024 to 26 DEC 2024

EC-2, 28 NOV 2024 to 26 DEC 2024