

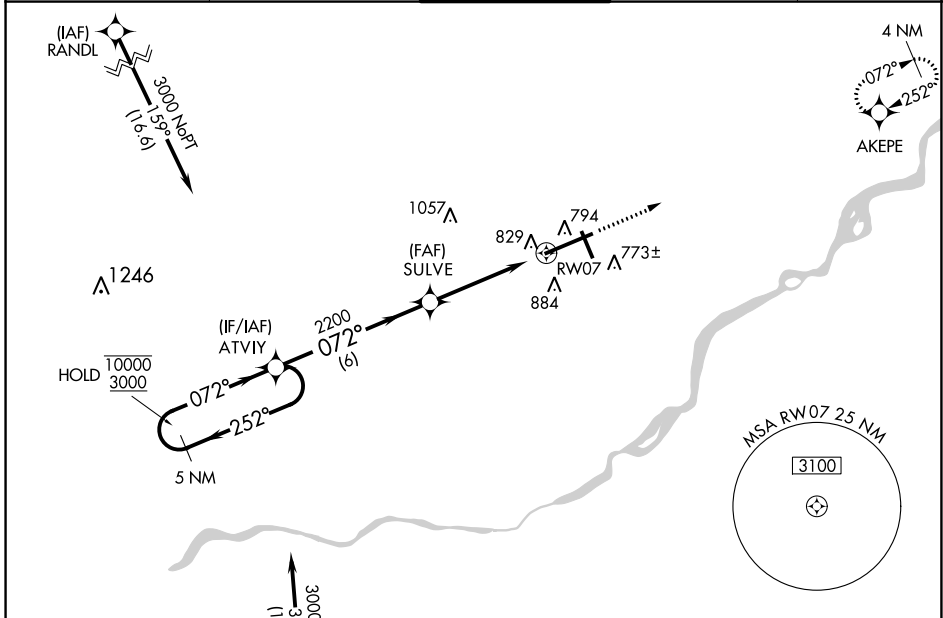
WAAS CH 99399 W07A	APP CRS 072°	Rwy Idg TDZE Apt Elev	10599 683 683
--	------------------------	-----------------------------	--

RNAV (GPS) RWY 7

EUGENE F KRANZ TOLEDO EXPRESS (TOL)

RNP APCH.	ALSF-2	MISSED APPROACH: Climb to 3000 direct AKEPE and hold.
<p>T For uncompensated Baro-VNAV systems, LNAV/VNAV NA below -17°C or above 52°C.</p> <p>A For inop ALS, increase LPV all Cats visibility to RVR 5000. Increase LNAV/VNAV Cat E and LNAV Cat E visibility to 1$\frac{1}{8}$ SM.</p> <p>ASR</p>		

ATIS 118.75 290.225	TOLEDO APP CON 134.35 317.55	TOLEDO TOWER 118.1 285.4	GND CON 121.9 348.6	CLNC DEL 121.75 348.6
-------------------------------	--	------------------------------------	-------------------------------	---------------------------------

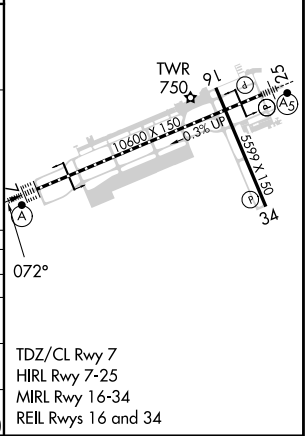


EC-2, 28 NOV 2024 to 26 DEC 2024

EC-2, 28 NOV 2024 to 26 DEC 2024

ELEV 683	D	TDZE 683
----------	----------	----------

5 NM Holding Pattern		3000		AKEPE	
<p>10000 ← 252°</p> <p>3000 → 072°</p> <p>GP 3.00°</p> <p>TCH 55</p>		<p>ATVIY</p> <p>SULVE 2200</p> <p>RW07</p> <p>*LNAV only.</p> <p>*1.3 NM to RW07</p>		<p>6 NM</p> <p>3.2 NM</p> <p>1.3</p>	
CATEGORY	A	B	C	D	E
LPV DA	1018/40 335 (400- $\frac{3}{4}$)				
LNAV/VNAV DA	1129/50 446 (500-1)				
LNAV MDA	1140/24	457 (500- $\frac{1}{2}$)	1140/40 457 (500- $\frac{3}{4}$)	1140/50	457 (500-1)
C CIRCLING	1200-1	517 (600-1)	1300-1 $\frac{3}{4}$ 617 (700-1 $\frac{3}{4}$)	1360-2 $\frac{1}{4}$ 677 (700-2 $\frac{1}{4}$)	1360-2 $\frac{1}{2}$ 677 (700-2 $\frac{1}{2}$)



TDZ/CL Rwy 7
HIRL Rwy 7-25
MIRL Rwy 16-34
REIL Rwy 16 and 34