

ILS or LOC Y RWY 26

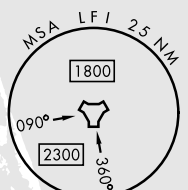
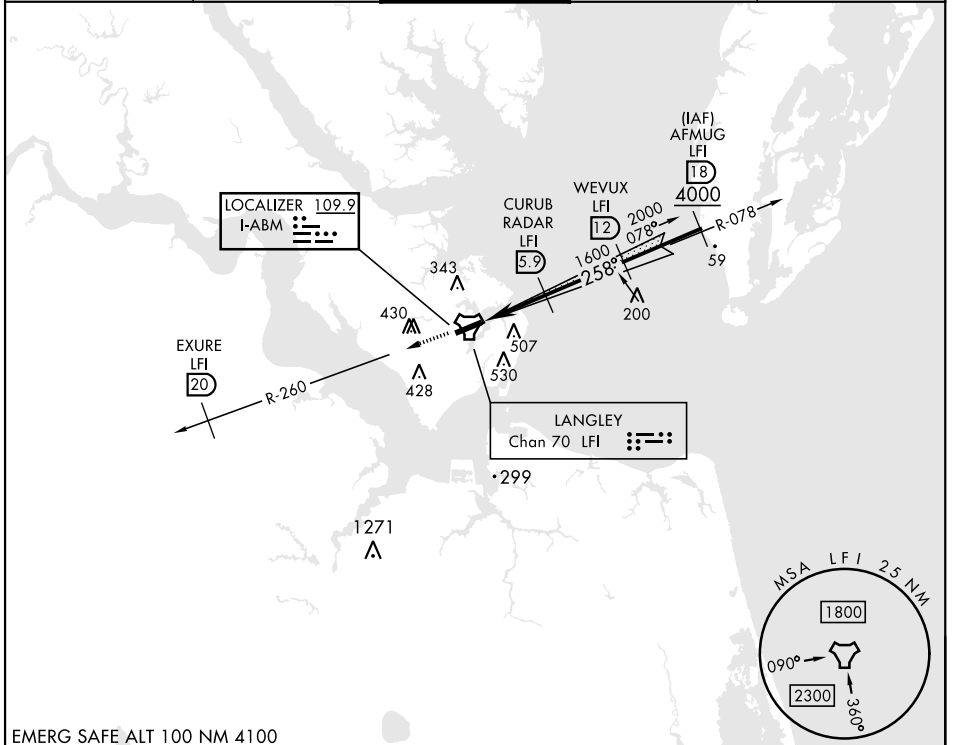
LOC I-ABM 109.9	APCH CRS 258°	Rwy Ldg 10,002
		TDZE 8
		Arprt Elev 8

[USAF]

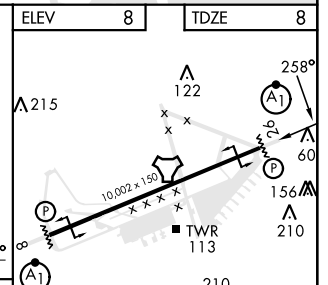
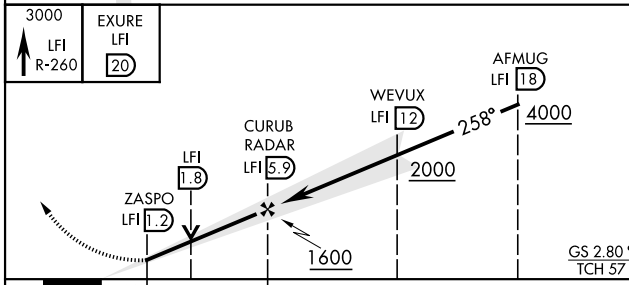
LANGLEY AFB (KLFJ)

RADAR or DME required		ALSIF-1 	MISSED APPROACH: Climb to 3000 via LFI R-260 to 20 DME (EXURE), then as instructed by ATC.
* When ALS inop, increase RVR to 40 and vis to 3/4 miles. ** When ALS inop, increase RVR to 55 and vis to 1 1/8 miles. *** Circling S of Rwy 8-26 not authorized.			

ATIS ★ 270.1	NORFOLK APP CON 125.7 335.625	TOWER ★ 125.0 253.5	GND CON 121.7 275.8	CLNC DEL 118.85 257.625
------------------------	---	-------------------------------	-------------------------------	-----------------------------------



EMERG SAFE ALT 100 NM 4100



ELEV	8	TDZE	8		
CATEGORY	A	B	C	D	E
S-ILS 26*	208/24		200	(200-1/2)	
S-LOC 26**	380/24	372 (400-5/8)	380/35	372 (400-5/8)	
CIRCLING ***	540-1	580-1	700-2	760-2 1/2	760-2 3/4
	532 (600-1)	572 (600-1)	692 (700-2)	752 (800-2 1/2)	752 (800-2 3/4)

HIRL Rwy 8-26					
FAF to MAP 4.7 NM					
Knots	60	90	120	150	180
Min:Sec	4:42	3:08	2:21	1:53	1:34

ILS or LOC Y RWY 26

NE-3, 28 NOV 2024 to 26 DEC 2024

NE-3, 28 NOV 2024 to 26 DEC 2024