

# TACAN Y RWY 26

TACAN LFI Chan <b>70</b>	APCH CRS <b>263°</b>	Rwy ldg <b>10,002</b> TDZE <b>8</b> Arprt Elev <b>8</b>
--------------------------	----------------------	---

[USAF]

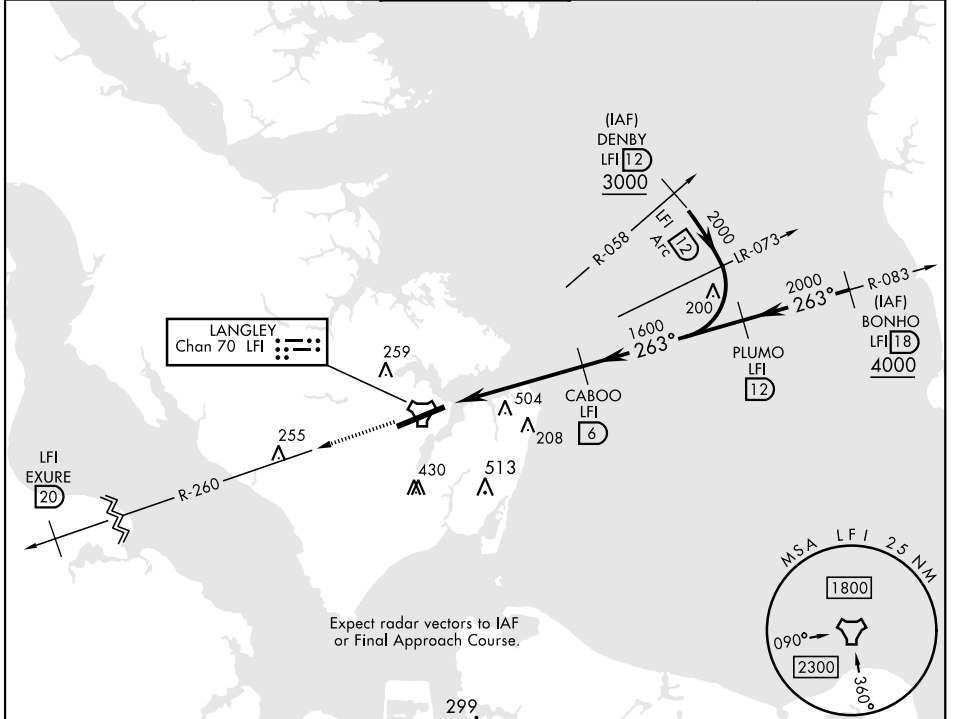
LANGLEY AFB (KLF1)

▼ \*When ALS inop, increase CAT AB RVR to 55 and vis to 1 mile, CAT CDE vis to 1½ miles.  
 \*\* Circling not authorized S of Rwy 8-26.



MISSED APPROACH: Climb to 3000 via LFI R-260 to 20 DME (EXURE), then as instructed by ATC.

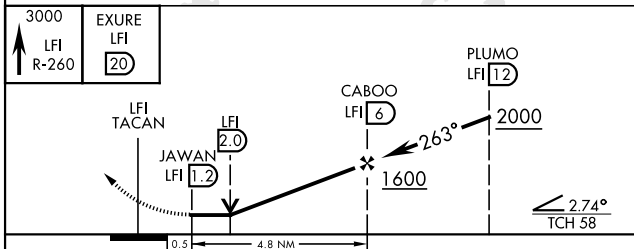
ATIS ★ <b>270.1</b>	NORFOLK APP CON <b>125.7 335.625</b>	TOWER ★ <b>125.0 253.5</b>	GND CON <b>121.7 275.8</b>	CLNC DEL <b>118.85 257.625</b>
---------------------	--------------------------------------	----------------------------	----------------------------	--------------------------------



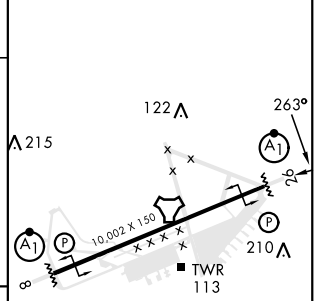
NE-3, 28 NOV 2024 to 26 DEC 2024

NE-3, 28 NOV 2024 to 26 DEC 2024

EMERG SAFE ALT 100 NM 4100



ELEV	8	TDZE	8
------	---	------	---



CATEGORY	A	B	C	D	E
S-26*	480/24	472 (500-½)	480/50	472 (500-1)	
CIRCLING**	540-1 532 (600-1)	580-1 572 (600-1)	700-2 692 (700-2)	760-2½ 752 (800-2½)	760-2¾ 752 (800-2¾)

HIRL Rwy 8-26  
 ☆ 210

# TACAN Y RWY 26