

VOR/DME HFD <b>114.9</b> Chan <b>96</b>	APP CRS <b>334°</b>	Rwy Idg TDZE Apt Elev <b>18</b>	N/A N/A <b>18</b>
-----------------------------------------------	------------------------	------------------------------------------	-------------------------

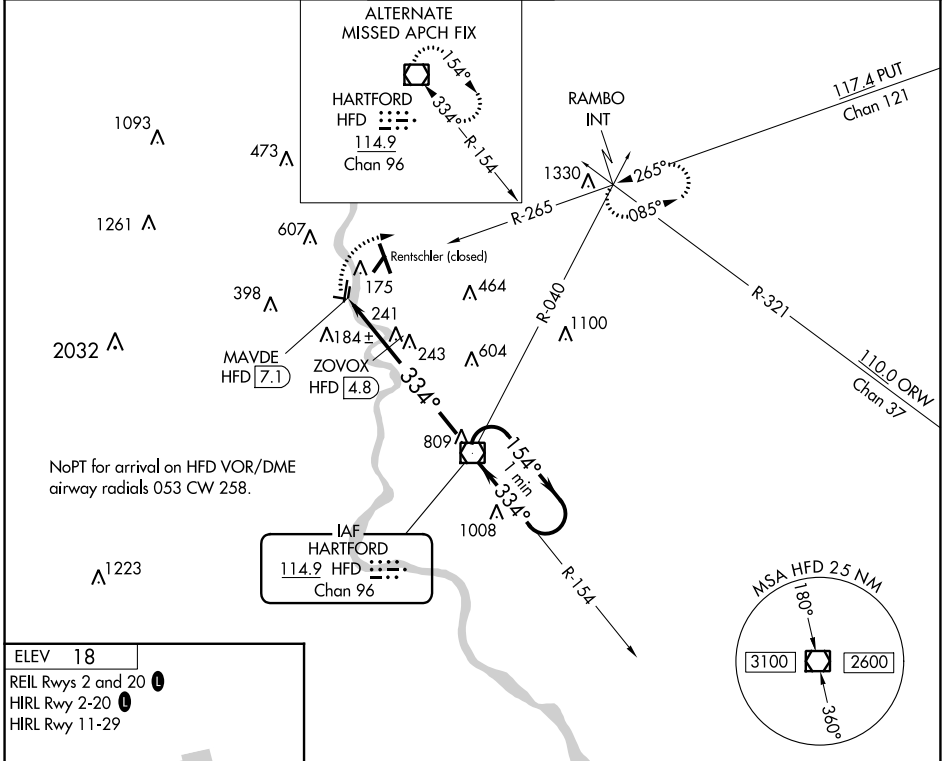
# VOR-A

## HARTFORD-BRAINARD (HF'D)

**▼** Helicopter visibility reduction below 1 SM NA. When Rwy 2 VGSi inop, Circling to Rwy 2 NA at night. Circling to Rwy 11 and 29 NA at night. When Rwy 20 VGSi inop, Circling to Rwy 20 NA at night.

**▲** MISSED APPROACH: Climbing right turn to 2500 on heading 100° and PUT VOR/DME R-265 to RAMBO INT and hold.

ATIS <b>126.45</b>	BRADLEY APP CON <b>127.8 269.325</b>	BRAINARD TOWER * <b>119.6 (CTAF) 0 248.2</b>	GND CON <b>121.6</b>	CLNC DEL <b>121.6</b>	UNICOM <b>122.95</b>
-----------------------	-----------------------------------------	-------------------------------------------------	-------------------------	--------------------------	-------------------------

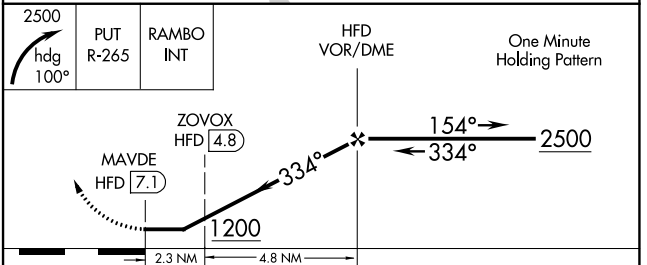
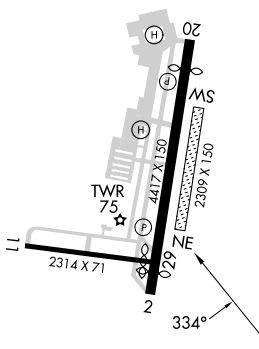


NoPT for arrival on HFD VOR/DME airway radials 053 CW 258.

NE-1, 28 NOV 2024 to 26 DEC 2024

NE-1, 28 NOV 2024 to 26 DEC 2024

ELEV <b>18</b>
REIL Rwy 2 and 20
HIRL Rwy 2-20
HIRL Rwy 11-29



CATEGORY	A	B	C	D
CIRCLING	1200-1¼ 1182 (1200-1¼)	1200-1½ 1182 (1200-1½)	1200-3 1182 (1200-3)	
ZOVOX FIX MINIMUMS (DME REQUIRED)				
CIRCLING	580-1 562 (600-1)	900-1¼ 882 (900-1¼)	920-2¾ 902 (1000-2¾)	920-3 902 (1000-3)

FAF to MAP 7.1 NM					
Knots	60	90	120	150	180
Min:Sec	7:06	4:44	3:33	2:50	2:22