


LOC I-HLN	APP CRS	Rwy Idg	9000
110.1	271°	TDZE	3852
		Apt Elev	3877

ILS Z or LOC Z RWY 27

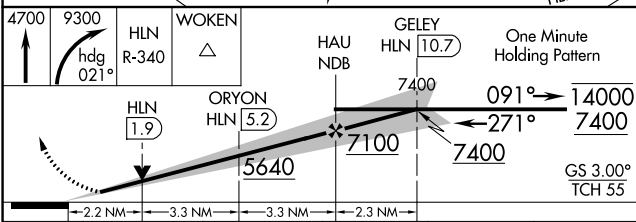
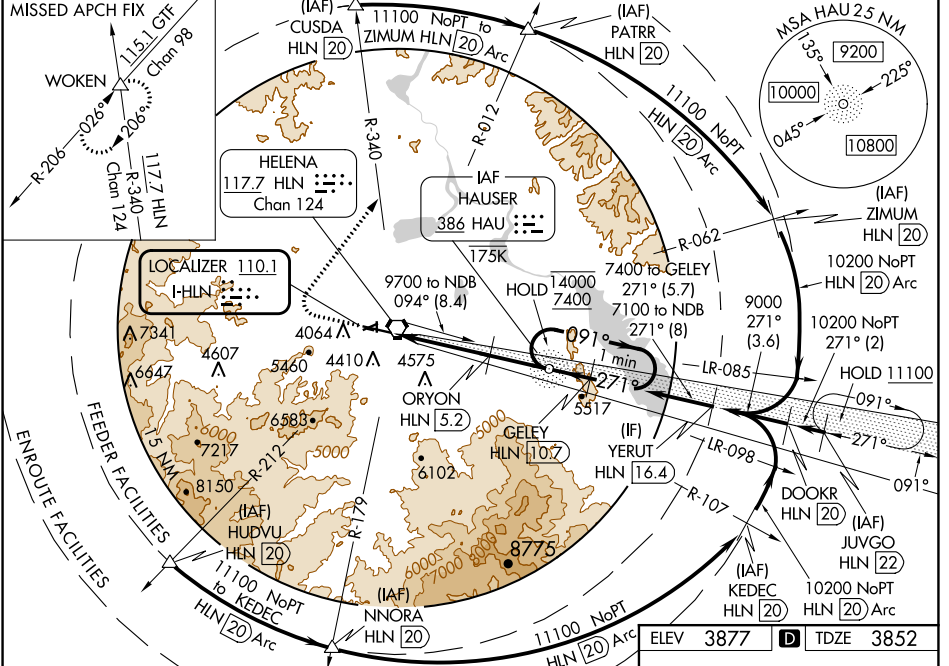
HELENA RGNL (HLN)

ADF or DME required.

⚠ Circling NA to Rwy's 10 and 28. Circling Rwy 5, 23, 35 NA at night. Inop table does not apply to S-LOC 27 all Cats. For inop ALS, increase S-ILS 27 Cat E visibility to ¼ mile, increase ORYON fix minimums: S-LOC 27 Cat C/D/E visibility to 2 miles. Circling NA for Cats D and E south of Rwy 9-27. -17°C Holding at HAU NDB authorized for Cat A and B aircraft only. * DME from HLN VORTAC. DME use requires simultaneous reception of I-HLN and HLN DME.

MALSR  MISSED APPROACH: Climb to 4700 then climbing right turn to 9300 on heading 021° and on HLN VORTAC R-340 to WOKEN INT and hold, continue climb-in-hold to 9300. #Missed approach requires minimum climb of 300 feet per NM to 6000; if unable to meet climb gradient, see ILS Y or LOC Y RWY 27.

ATIS	HELENA APP CON *	HELENA TOWER *	GND CON	UNICOM
120.4	119.5 229.4	118.3 (CTAF) 125.8	121.9	122.95



CATEGORY	A	B	C	D	E
S-ILS 27#	4052-½ 200 (200-½)				
S-LOC 27	5640-1¼ 1788 (1800-1¼)	5640-1½ 1788 (1800-1½)	5640-3 1788 (1800-3)	1788 (1800-3)	
CIRCLING	5640-1¼ 1763 (1800-1¼)	5640-1½ 1763 (1800-1½)	6000-3 2123 (2200-3)	2123 (2200-3)	
ORYON FIX MINIMUMS*					
S-LOC 27	4600-½ 748 (800-½)	4600-¾ 748 (800-¾)	4600-1¾ 748 (800-1¾)	748 (800-1¾)	
CIRCLING	4640-1 763 (800-1)	4800-1¼ 923 (1000-1¼)	6000-3 2123 (2200-3)	2123 (2200-3)	

ELEV 3877 **D** TDZE 3852

One Minute Holding Pattern

REIL Rwy's 9, 17 and 35 **Ⓛ**
MIRL Rwy's 5-23 and 17-35 **Ⓛ**
HIRL Rwy 9-27 **Ⓛ**

FAF to MAP 8.7 NM

Knots	60	90	120	150	180
Min:Sec	8:42	5:48	4:21	3:29	2:54

NW-1, 28 NOV 2024 to 26 DEC 2024

NW-1, 28 NOV 2024 to 26 DEC 2024