

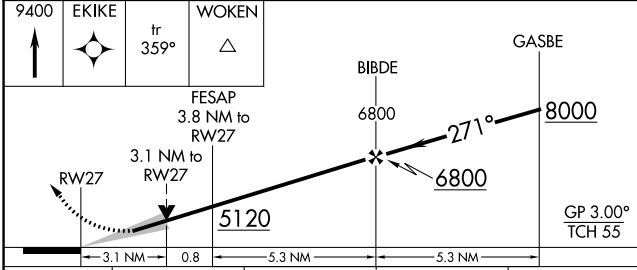
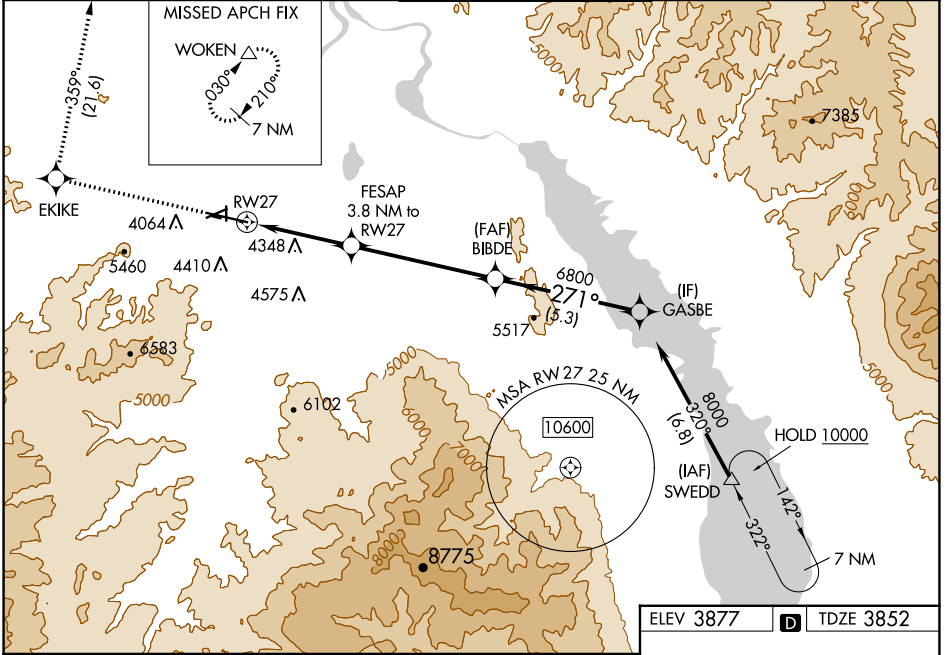
WAAS CH <b>69405</b> <b>W27A</b>	APP CRS <b>271°</b>	Rwy Idg TDZE Apt Elev <b>9000</b> <b>3852</b> <b>3877</b>
--	------------------------	--

# RNAV (GPS) X RWY 27

HELENA RGNL (HLN)

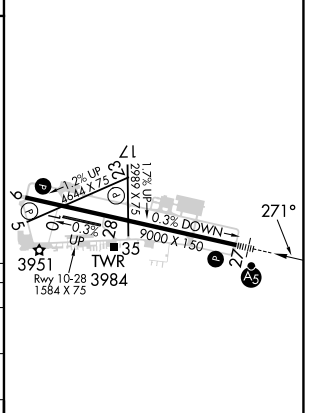
RNP APCH - GPS.	MALSRR 	MISSED APPROACH: Climb to 9400 direct EKIKE and on track 359° to WOKEN and hold.
 Circling NA to Rwsy 10 and 28. For uncompensated Baro-VNAV systems, LNAV/VNAV NA below -26°C or above 54°C. Circling Rwy 5, 23, 35 NA at night. For inop ALS, increase LPV all Cats visibility to 1/2 SM. Circling NA for Cat D south of Rwy 9-27.		

ATIS <b>120.4</b>	HELENA APP CON * <b>119.5 229.4</b>	HELENA TOWER * <b>118.3 (CTAF) 257.8</b>	GND CON <b>121.9</b>	UNICOM <b>122.95</b>
----------------------	--	---	-------------------------	-------------------------



ELEV 3877		TDZE 3852
-----------	--	-----------

CATEGORY	A	B	C	D
LPV DA		4501-1 $\frac{3}{8}$	649 (700-1 $\frac{3}{8}$ )	
LNAV/VNAV DA		4724-2	872 (900-2)	
LNAV MDA	4880- $\frac{3}{4}$ 1028 (1100- $\frac{3}{4}$ )	4880-1 1028 (1100-1)	4880-2 $\frac{1}{2}$	1028 (1100-2 $\frac{1}{2}$ )
CIRCLING	4880-1 $\frac{1}{4}$ 1003 (1100-1 $\frac{1}{4}$ )	4880-1 $\frac{1}{2}$ 1003 (1100-1 $\frac{1}{2}$ )	6000-3	2123 (2200-3)



REIL Rwsy 9, 17, and 35   
 MIRL Rwsy 5-23 and 17-35   
 HIRL Rwy 9-27

NW-1, 28 NOV 2024 to 26 DEC 2024

NW-1, 28 NOV 2024 to 26 DEC 2024