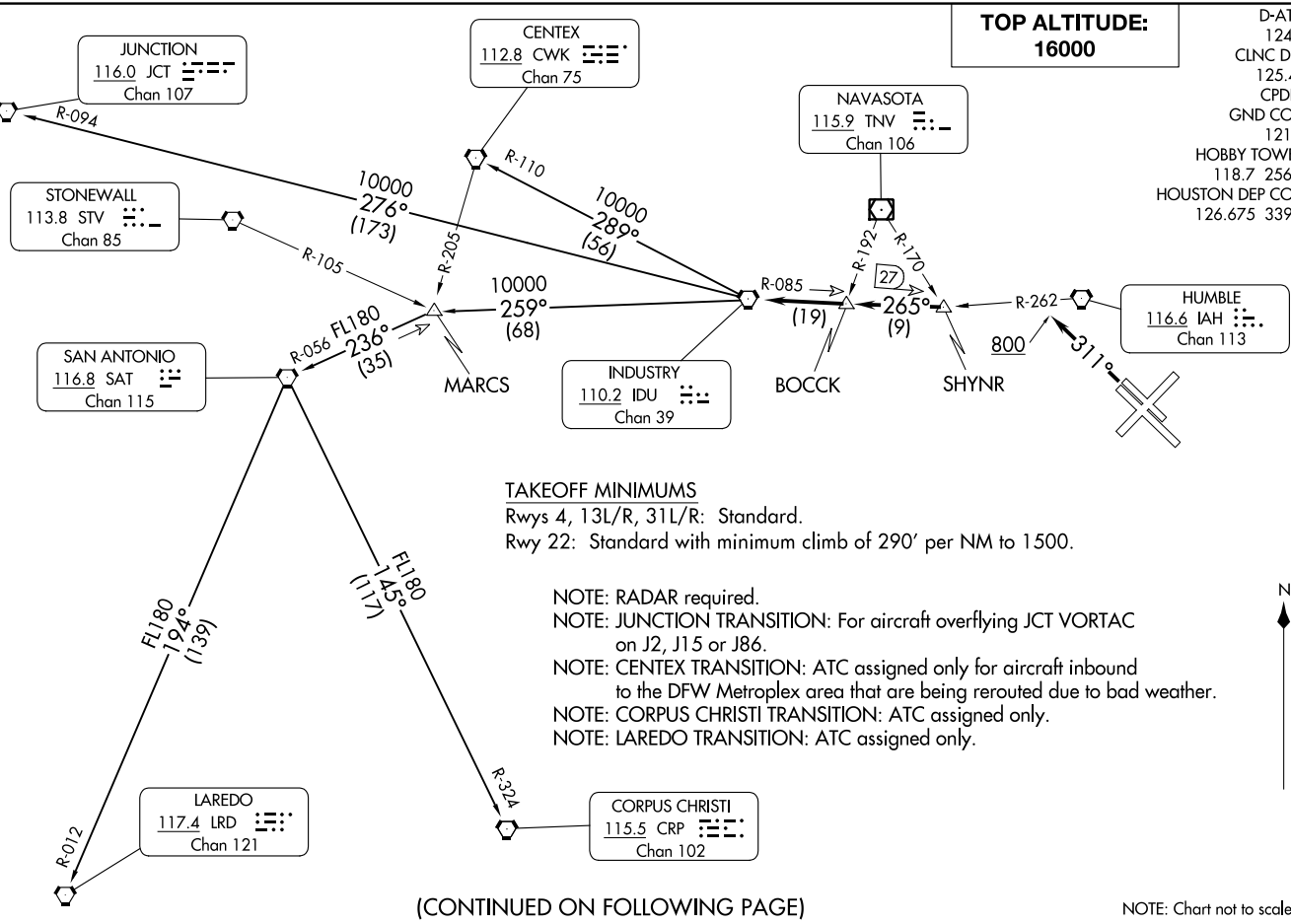


INDUSTRY ONE DEPARTURE  
(IDU1, IDU) 070C121

INDUSTRY ONE DEPARTURE  
(IDU1, IDU) 24137

- D-ATIS 124.6
- CLNC DEL 125.45
- CPDLC
- GND CON 121.9
- HOBBY TOWER 118.7 256.9
- HOUSTON DEP CON 126.675 339.8

**TOP ALTITUDE:  
16000**



**TAKEOFF MINIMUMS**

Rwys 4, 13L/R, 31L/R: Standard.  
Rwy 22: Standard with minimum climb of 290' per NM to 1500.

- NOTE: RADAR required.
- NOTE: JUNCTION TRANSITION: For aircraft overflying JCT VORTAC on J2, J15 or J86.
- NOTE: CENTEX TRANSITION: ATC assigned only for aircraft inbound to the DFW Metroplex area that are being rerouted due to bad weather.
- NOTE: CORPUS CHRISTI TRANSITION: ATC assigned only.
- NOTE: LAREDO TRANSITION: ATC assigned only.

(CONTINUED ON FOLLOWING PAGE)

NOTE: Chart not to scale.

HOUSTON, TEXAS  
WILLIAM P HOBBY (HOT)

WILLIAM P HOBBY (HOT)  
HOUSTON, TEXAS



DEPARTURE ROUTE DESCRIPTION

TAKEOFF RUNWAYS 4, 13L/R, 22: Climb on assigned heading for RADAR vectors to SHYNR INT, maintain 16000. Expect filed altitude 10 minutes after departure, thence . . . .

TAKEOFF RUNWAYS 31L/R: Climb on heading 311° to 800 before turning, then climb on assigned heading for RADAR vectors to SHYNR INT, maintain 16000. Expect filed altitude 10 minutes after departure, thence . . . .

. . . . on IDU R-085 to BOCCK INT, then on IDU R-085 to IDU VORTAC.

CENTEX TRANSITION (IDU1.CWK): From over IDU VORTAC on IDU R-289 and CWK R-110 to CWK VORTAC.

CORPUS CHRISTI TRANSITION (IDU1.CRP): From over IDU VORTAC on IDU R-259 to MARCS INT, then on SAT R-056 to SAT VORTAC, then on SAT R-145 and CRP R-324 to CRP VORTAC.

JUNCTION TRANSITION (IDU1.JCT): From over IDU VORTAC on IDU R-276 and JCT R-094 to JCT VORTAC.

LAREDO TRANSITION (IDU1.LRD): From over IDU VORTAC on IDU R-259 to MARCS INT, then on SAT R-056 to SAT VORTAC, then on SAT R-194 and LRD R-012 to LRD VORTAC.

SC-5, 28 NOV 2024 to 26 DEC 2024

SC-5, 28 NOV 2024 to 26 DEC 2024