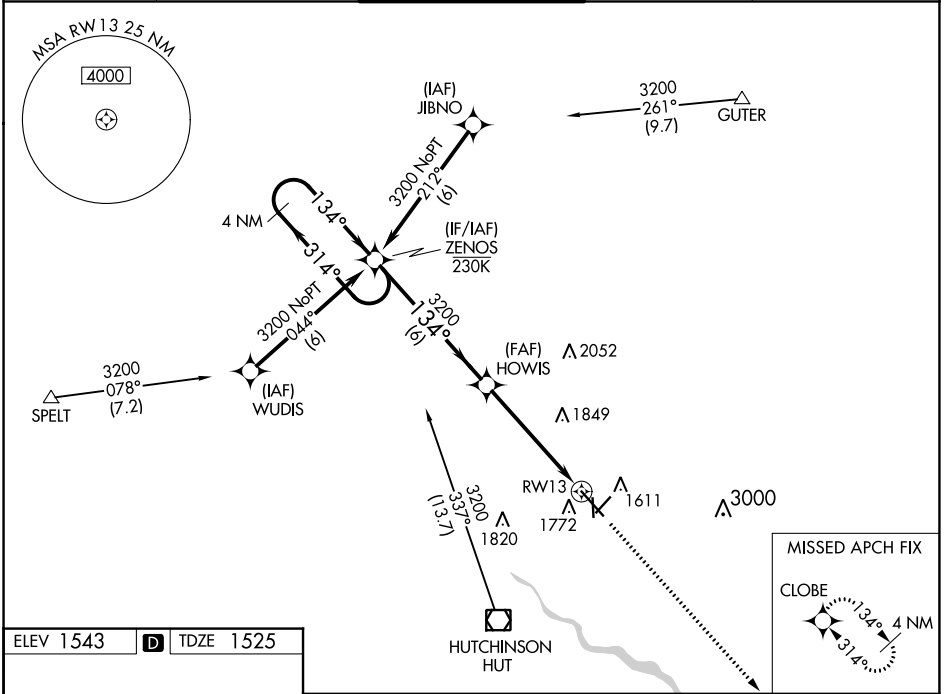


WAAS CH <b>50210</b> <b>W13A</b>	APP CRS <b>134°</b>	Rwy Idg TDZE Apt Elev	<b>7003</b> <b>1525</b> <b>1543</b>
--	------------------------	-----------------------------	---

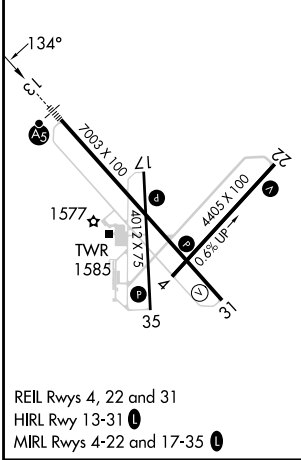
# RNAV (GPS) RWY 13

HUTCHINSON RGNL (HUT)

RNP APCH-GPS		MALSR	MISSED APPROACH: Climb to 3600 direct CLOBE and hold.	
<p>⚠ Circling to Rwy 22 NA at night. For uncompensated Baro-VNAV systems, LNAV/VNAV NA below -18°C or above 54°C. # RVR 1800 authorized with use of FD or HUD to DA.</p>				
ATIS <b>124.25</b>	WICHITA APP CON <b>125.5 306.2</b>	HUTCHINSON TOWER ★ <b>118.5 (CTAF) 363.0</b>	GND CON <b>121.9</b>	UNICOM <b>122.95</b>



ELEV 1543	D	TDZE 1525
-----------	---	-----------



	ZENOS	HOWIS	3600	CLOBE
	4 NM Holding Pattern	3200	3600	CLOBE
	3200 ← 314°	134° →	*1.7 NM to RWY 13	*LNAV only
	GP 3.00° TCH 48	3200	6 NM	3.4 NM
			1.7 NM	
CATEGORY	A	B	C	D
LPV DA#		1725/24	200 (200-½)	
LNAV/VNAV DA		1932/40	407 (400-¾)	
LNAV MDA	2120/24	595 (600-½)	2120-1¼	595 (600-1¼)
CIRCLING	2120-1	577 (600-1)	2200-1¾ 657 (700-1¼)	2720-3 1177 (1200-3)

NC-2, 28 NOV 2024 to 26 DEC 2024

NC-2, 28 NOV 2024 to 26 DEC 2024