

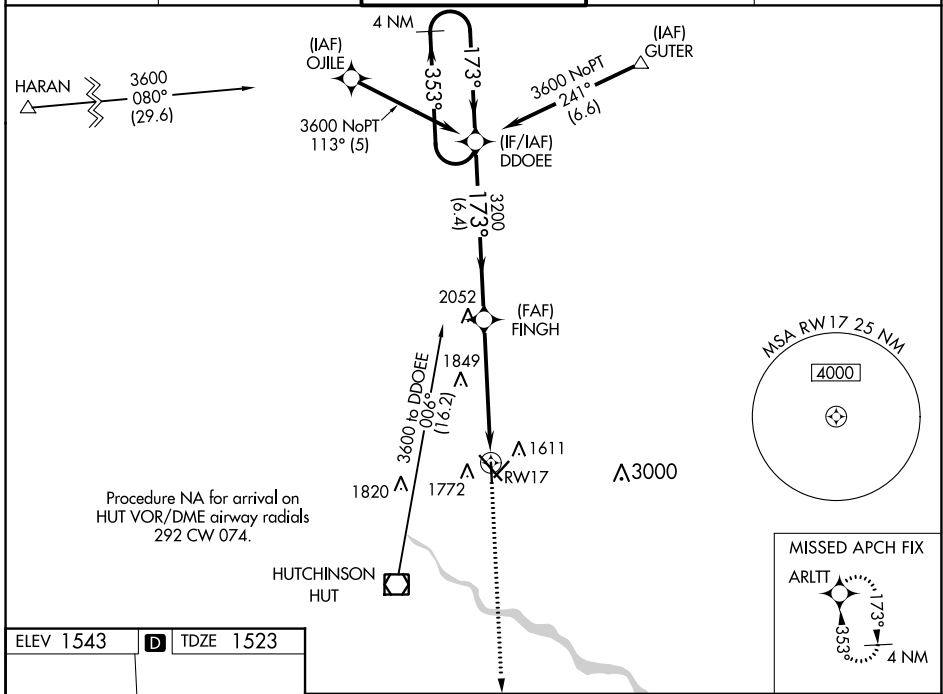
WAAS CH 81941 W17A	APP CRS 173°	Rwy Idg TDZE Apt Elev	4012 1523 1543
----------------------------------------	------------------------	-----------------------------	-------------------------------------------

RNAV (GPS) RWY 17

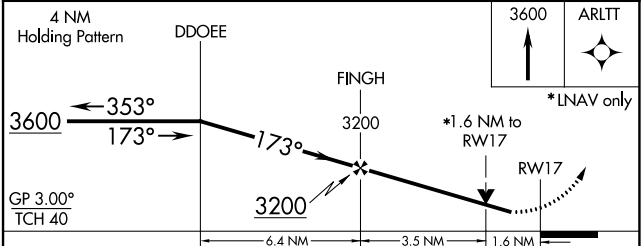
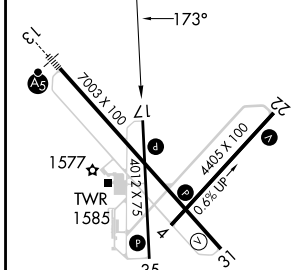
HUTCHINSON RGNL (HUT)

7 Circling to Rwy 22 NA at night. For uncompensated Baro-VNAV systems, LNAV/VNAV NA below -18°C (0°F) or above 54°C (130°F). DME/DME RNP-0.3 NA. MISSED APPROACH: Climb to 3600 direct ARLTT and hold.

ATIS 124.25	WICHITA APP CON 125.5 306.2	HUTCHINSON TOWER * 118.5 (CTAF) 363.0	GND CON 121.9	UNICOM 122.95
-----------------------	---------------------------------------	-------------------------------------------------	-------------------------	-------------------------



ELEV 1543	D	TDZE 1523
-----------	----------	-----------



CATEGORY	A	B	C	D
LPV DA	1889-1 366 (400-1)			NA
LNAV/VNAV DA	2078-1½ 555 (600-1½)			NA
LNAV MDA	2060-1	537 (600-1)	2060-1½ 537 (600-1½)	NA
C CIRCLING	2080-1	537 (600-1)	2200-1¾ 657 (700-1¾)	NA

REIL Rwy 4, 22 and 31
HIRL Rwy 13-31
MIRL Rwy 4-22 and 17-35

NC-2, 28 NOV 2024 to 26 DEC 2024

NC-2, 28 NOV 2024 to 26 DEC 2024