

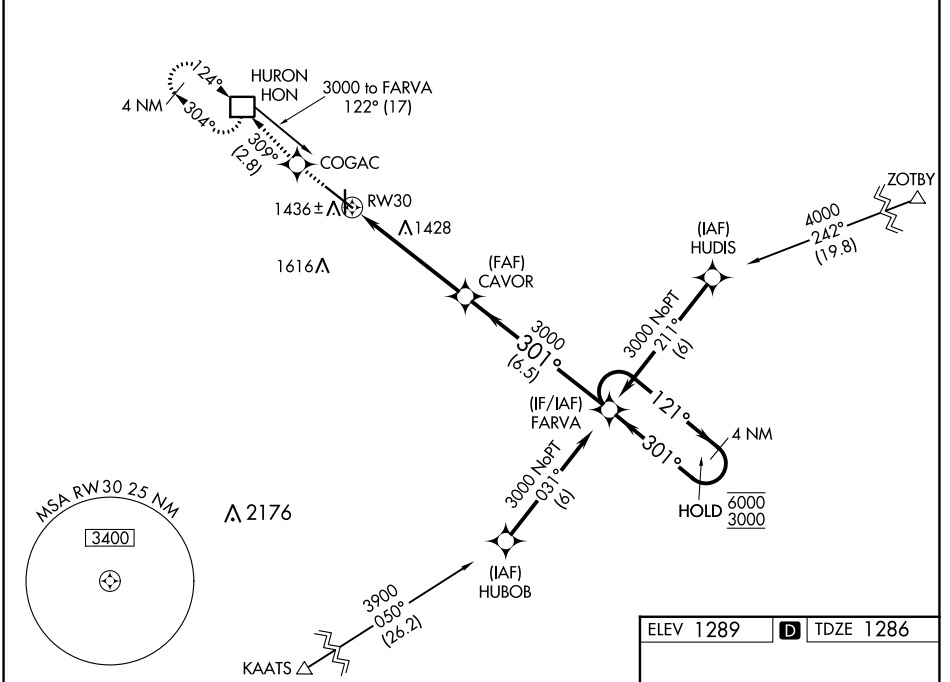
WAAS CH <b>77514</b> <b>W30A</b>	APP CRS <b>301°</b>	Rwy Idg <b>7201</b> TDZE <b>1286</b> Apt Elev <b>1289</b>
--	------------------------	---

# RNAV (GPS) RWY 30

HURON RGNL (HON)

RNP APCH.	MISSED APPROACH: Climb to 3000 direct COGAC and on track 309° to HON DME and hold.
<p><b>▼</b> Circling Rwy 18, 36 NA at night. Rwy 30 helicopter visibility reduction below 3/4 SM NA. For uncompensated Baro-VNAV systems, LNAV/VNAV NA below -17°C or above 54°C.</p>	

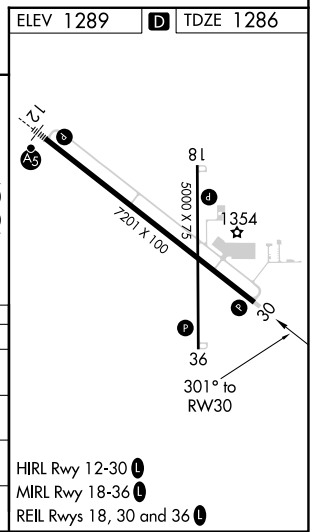
ASOS <b>118.125</b>	MINNEAPOLIS CENTER <b>126.25 339.8</b>	UNICOM <b>123.0 (CTAF) 0</b>
------------------------	---	---------------------------------



NC-1, 28 NOV 2024 to 26 DEC 2024

NC-1, 28 NOV 2024 to 26 DEC 2024

3000 COGAC	HON	CAVOR	FARVA	4 NM Holding Pattern
↑	tr 309°			
*LNAV only				
	RW30	CAVOR	FARVA	4 NM Holding Pattern
	*1.3 NM to RW30	3000	121° → 6000	← 3000
			← 301°	
				GP 3.00° TCH 50
	1.3 NM	3.9 NM	6.5 NM	
CATEGORY	A	B	C	D
LPV DA		1559-1	273 (300-1)	
LNAV/VNAV DA		1721-1½	435 (500-1½)	
LNAV MDA	1760-1	474 (500-1)	1760-1½ 474 (500-1½)	1760-1½ 474 (500-1½)
<b>C</b> CIRCLING	1820-1	531 (600-1)	1920-1¾ 631 (700-1¾)	1980-2¼ 691 (700-2¼)



- HIRL Rwy 12-30 **L**
- MRL Rwy 18-36 **L**
- REIL Rws 18, 30 and 36 **L**