

(DAWNN1.DAWNN) 23334
DAWNN ONE DEPARTURE

AL-203 (FAA)

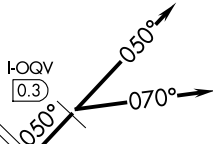
INDIANAPOLIS INTL (IND)
 INDIANAPOLIS, INDIANA

D-ATIS 134.25
 CLNC DEL
 128.75 257.8
 CPDLC
 GND CON
 121.9
 INDY TOWER
 120.9 257.8
 INDIANAPOLIS DEP CON
 124.95 317.8 (EAST)
 119.05 317.8 (WEST)

**TOP ALTITUDE:
 ASSIGNED BY
 ATC**

BRICKYARD
 116.3 VHP
 Chan 110

LOCALIZER
 111.75 I-UZK
 Chan 54(Y)



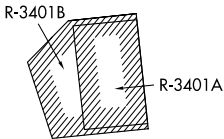
LOCALIZER
 111.15 I-OQV
 Chan 48(Y)

LOCALIZER
 111.15 I-FVJ
 Chan 48(Y)

TERRE HAUTE
 115.3 TTH
 Chan 100

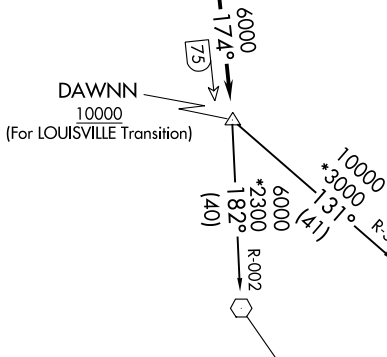
HOOSIER
 110.2 OOM
 Chan 39

SNEVA RADAR
 FOYTT RADAR



LOUISVILLE
 114.8 IU
 Chan 95

MYSTIC
 108.2 MYS



TAKEOFF MINIMUMS:
 Rwy 5L/R, 14, 23L/R, 32: Standard.

- NOTE: RADAR required.
- NOTE: Select appropriate localizer/DME frequency/channel prior to departure.
- NOTE: Turbojets accelerate to 250K until reaching 10000, if unable advise ATC.
- NOTE: Assigned to aircraft with a requested altitude of 11000 or above.

(NARRATIVE ON FOLLOWING PAGE)

NOTE: Chart not to scale.

(DAWNN1.DAWNN) 07DEC17
DAWNN ONE DEPARTURE

INDIANAPOLIS, INDIANA
 INDIANAPOLIS INTL (IND)

EC-2, 28 NOV 2024 to 26 DEC 2024

EC-2, 28 NOV 2024 to 26 DEC 2024



DEPARTURE ROUTE DESCRIPTION

TAKEOFF RWY 23R (TURBOJETS ONLY-DME REQUIRED): Climb on heading 230° to I-UZK 2.6 DME, then on assigned heading 230° or 215° to assigned altitude.

Thence....

TAKEOFF RWY 23L (TURBOJETS ONLY-DME REQUIRED): Climb on heading 230° to I-FVJ 2.3 DME, then on assigned heading 210°, 230°, or 245° to assigned altitude.

Thence....

TAKEOFF RWY 5R (TURBOJETS ONLY-DME REQUIRED): Climb on heading 050° to I-OQV 0.3 DME, then on assigned heading 050° or 070° to assigned altitude.

Thence....

TAKEOFF ALL OTHER RWYS (TURBOJETS ONLY): Climb on assigned heading to assigned altitude. Thence....

TAKEOFF ALL RWYS (PROPELLER ONLY): Climb on assigned heading to assigned altitude. Thence....

DEPARTING ALL OTHER AUTHORIZED RUNWAYS/AIRPORTS: Climb on assigned heading to assigned altitude. Thence....

....on RADAR vectors to join VHP R-174 to DAWNN INT then on transition or assigned route. Expect clearance to requested altitude ten minutes after departure.

LOUISVILLE TRANSITION (DAWNN1.IIU): From over DAWNN INT on IIU R-311 to IIU VORTAC.

MYSTIC TRANSITION (DAWNN1.MYS): From over DAWNN INT on MYS R-002 to MYS VOR.

EC-2, 28 NOV 2024 to 26 DEC 2024

EC-2, 28 NOV 2024 to 26 DEC 2024