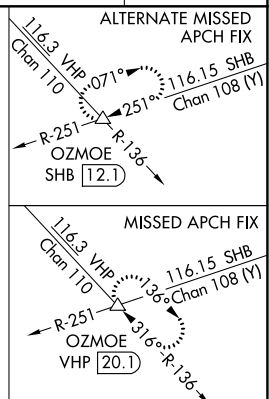
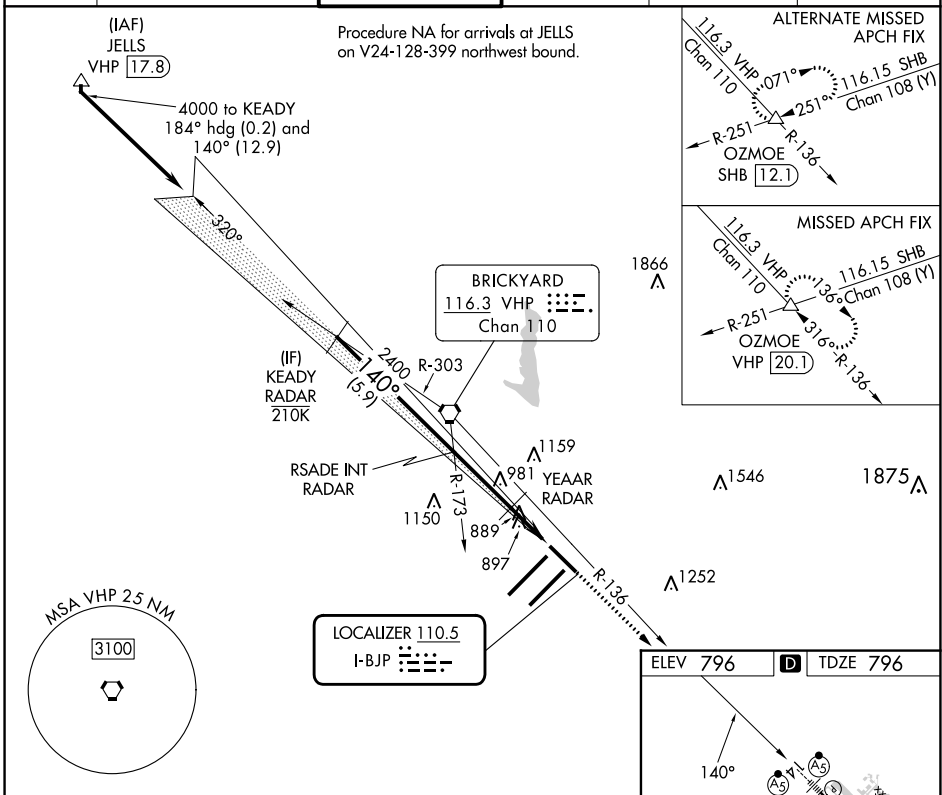


ILS or LOC RWY 14 INDIANAPOLIS INTL (IND)

LOC I-BJP 110.5	APP CRS 140°	Rwy Idg 7278 TDZE 796 Apt Elev 796
---------------------------	------------------------	---

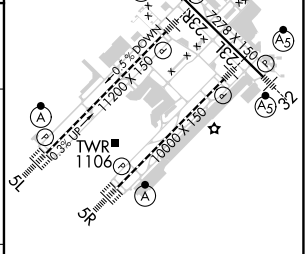
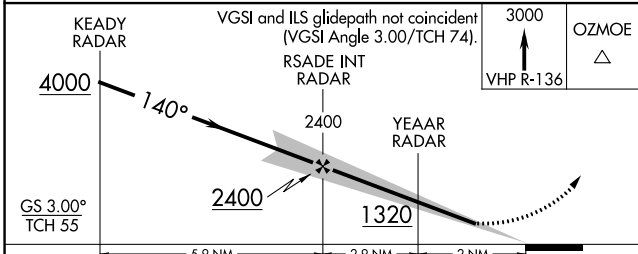
RADAR required. <div style="display: flex; align-items: center;"> ▼ For inop ALS, increase S-LOC 14 Cat C and D visibility to RVR 5500. ▲ *RVR 1800 authorized with use of FD or AP or HUD to DA. </div>		MALSR 	MISSED APPROACH: Climb to 3000 on VHP R-136 to OZMOE INT/ VHP 20.1 DME and hold.
--	--	-----------	--

D-ATIS 134.25	INDIANAPOLIS APP CON 128.175 317.8	INDY TOWER 120.9 257.8	GND CON 121.9	CLNC DEL 128.75 257.8	CPDLC
-------------------------	--	----------------------------------	-------------------------	---------------------------------	-------



EC-2, 28 NOV 2024 to 26 DEC 2024

EC-2, 28 NOV 2024 to 26 DEC 2024



CATEGORY	A	B	C	D
	S-ILS 14 * 996/24 200 (200-½)			
S-LOC 14	1140/24 344 (400-½)	1140/30 344 (400-½)	1420-1¾ 624 (700-1¾)	1560-2½ 764 (800-2½)
CIRCLING	1420-1 624 (700-1)	1420-1¾ 624 (700-1¾)	1560-2½ 764 (800-2½)	

HIRL all Rwys TDZ/CL Rwy 5L and 5R					
FAF to MAP 4.9 NM					
Knots	60	90	120	150	180
Min:Sec	4:54	3:16	2:27	1:58	1:38

INDIANAPOLIS INTL (IND) ILS or LOC RWY 14