

(JAKKS.JAKKS2) 24137

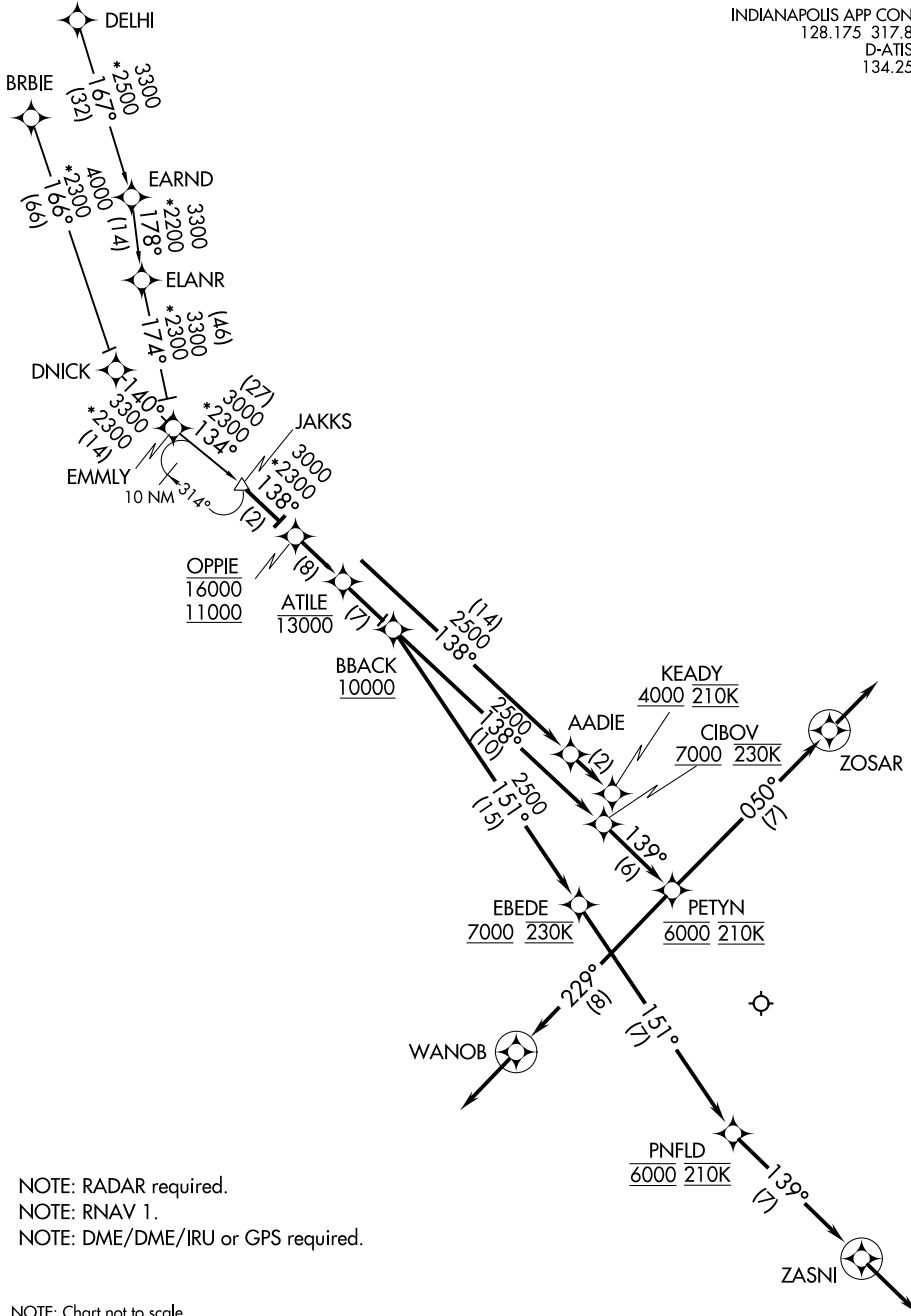
AL-203 (FAA)

INDIANAPOLIS INTL (IND)

# JAKKS TWO ARRIVAL (RNAV)

INDIANAPOLIS, INDIANA

INDIANAPOLIS APP CON  
128.175 317.8  
D-ATIS  
134.25



NOTE: RADAR required.  
NOTE: RNAV 1.  
NOTE: DME/DME/IRU or GPS required.

NOTE: Chart not to scale.

EC-2, 28 NOV 2024 to 26 DEC 2024

EC-2, 28 NOV 2024 to 26 DEC 2024

# JAKKS TWO ARRIVAL (RNAV)

(JAKKS.JAKKS2) 10NOV16

INDIANAPOLIS, INDIANA  
INDIANAPOLIS INTL (IND)

JAKKS TWO ARRIVAL (RNAV)

ARRIVAL ROUTE DESCRIPTION

BRBIE TRANSITION (BRBIE.JAKKS2):

DELHI TRANSITION (DELHI.JAKKS2):

ELANR TRANSITION (ELANR.JAKKS2):

From JAKKS on track 138° to cross OPPIE between 11000 and 16000, then on track 138° to cross ATILE at or below 13000.

LANDING RWY 5L/R: From ATILE on track 138° to cross BBACK at or above 10000, then on track 138° to cross CIBOV at or above 7000 and at 230K, then on track 139° to cross PETYN at 6000 and at 210K, then on track 229° to WANOB, then on track 229°. Expect radar vectors to final approach course.

LANDING RWY 14: From ATILE on track 138° to AADIE, then on track 138° to cross KEADY at or above 4000 and at 210K. Expect RNAV (RNP), RNAV (GPS) or ILS or LOC Rwy 14 or radar vectors to final approach course.

LANDING RWY 23L/R: From ATILE on track 138° to cross BBACK at or above 10000, then on track 138° to cross CIBOV at or above 7000 and at 230K, then on track 139° to cross PETYN at 6000 and at 210K, then on track 050° to ZOSAR, then on track 050°. Expect radar vectors to final approach course.

LANDING RWY 32: From ATILE on track 138° to cross BBACK at or above 10000, then on track 151° to cross EBEDE at or above 7000 and at 230K, then on track 151° to cross PNFLD at 6000 and at 210K, then on track 139° to ZASNI, then on track 139°. Expect radar vectors to final approach course.

LOST COMMUNICATIONS: In the event of lost communication prior to runway assignment, execute ILS or LOC RWY 23R approach.

EC-2, 28 NOV 2024 to 26 DEC 2024

EC-2, 28 NOV 2024 to 26 DEC 2024