

# MEARZ SEVEN DEPARTURE

INDIANAPOLIS, INDIANA

**TOP ALTITUDE:**  
**(JETS) 5000**  
**(PROPS) 3000**

RADAR required.

D-ATIS 134.25  
 CLNC DEL 128.75 257.8  
 CPDLC GND CON 121.9  
 INDY TOWER 120.9 257.8  
 INDIANAPOLIS DEP CON 124.95 317.8 (EAST)  
 119.05 317.8 (WEST)

BOILER  
 115.1 BVT  
 Chan 98

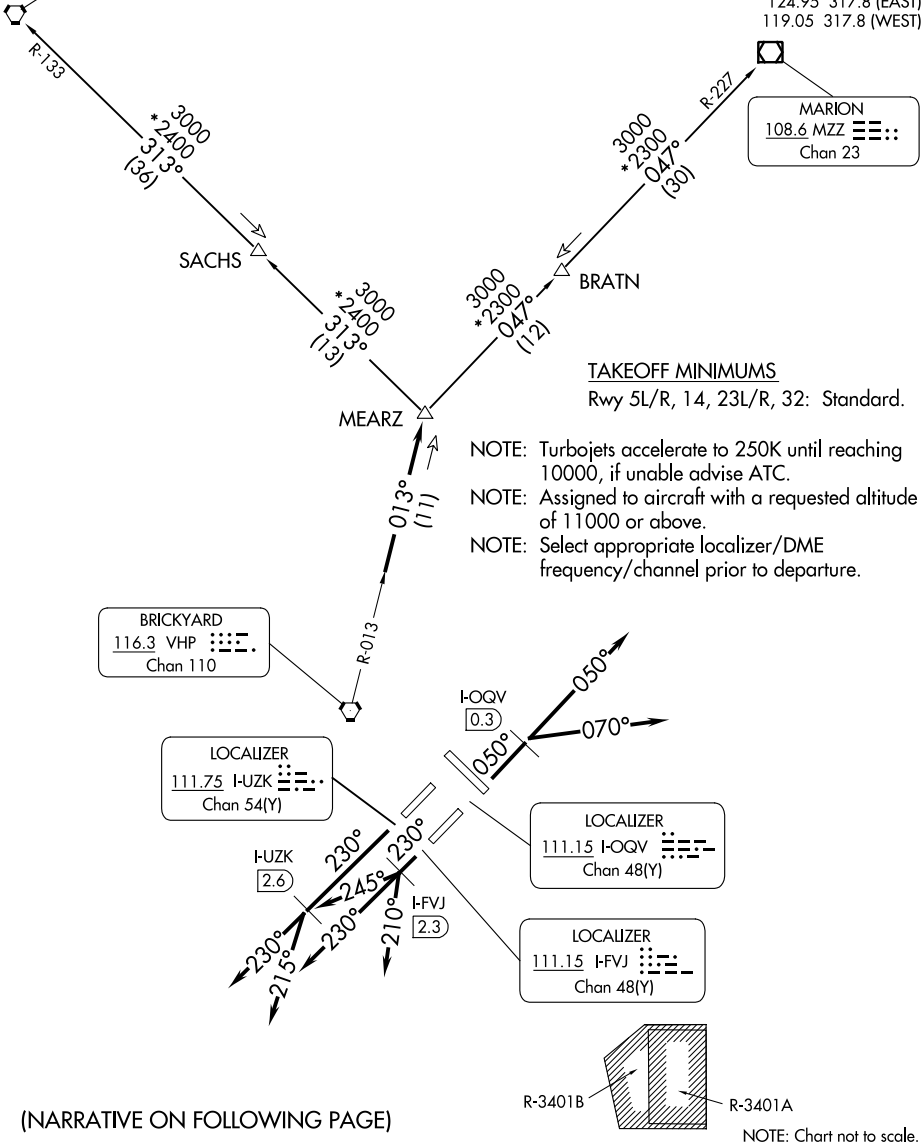
MARION  
 108.6 MZZ  
 Chan 23

BRICKYARD  
 116.3 VHP  
 Chan 110

LOCALIZER  
 111.75 I-UZK  
 Chan 54(Y)

LOCALIZER  
 111.15 I-OQV  
 Chan 48(Y)

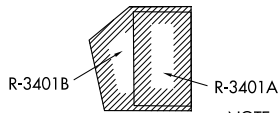
LOCALIZER  
 111.15 I-FVJ  
 Chan 48(Y)



**TAKEOFF MINIMUMS**  
 Rwy 5L/R, 14, 23L/R, 32: Standard.

- NOTE: Turbojets accelerate to 250K until reaching 10000, if unable advise ATC.
- NOTE: Assigned to aircraft with a requested altitude of 11000 or above.
- NOTE: Select appropriate localizer/DME frequency/channel prior to departure.

(NARRATIVE ON FOLLOWING PAGE)



NOTE: Chart not to scale.

EC-2, 28 NOV 2024 to 26 DEC 2024

EC-2, 28 NOV 2024 to 26 DEC 2024



DEPARTURE ROUTE DESCRIPTION

TAKEOFF RUNWAY 5R (TURBOJETS ONLY-DME REQUIRED): Climb on heading 050° to I-OQV 0.3 DME, then on assigned heading 050° or 070°. Maintain 5000.

Thence....

TAKEOFF RUNWAY 23R (TURBOJETS ONLY-DME REQUIRED): Climb on heading 230° to I-UZK 2.6 DME, then on assigned heading 230° or 215°. Maintain 5000.

Thence....

TAKEOFF RUNWAY 23L (TURBOJETS ONLY-DME REQUIRED): Climb on heading 230° to I-FVJ 2.3 DME, then on assigned heading 210°, 230°, or 245°. Maintain 5000.

Thence....

TAKEOFF ALL OTHER RUNWAYS (TURBOJETS ONLY): Climb on assigned heading. Maintain 5000. Thence....

TAKEOFF ALL RUNWAYS (PROPELLER ONLY): Climb on assigned heading. Maintain 3000. Thence....

DEPARTING ALL OTHER AUTHORIZED RUNWAYS: Climb on assigned heading to assigned altitude. Thence....

....expect RADAR vectors to join VHP R-013 to MEARZ then on transition or assigned route. Expect clearance to requested altitude ten minutes after departure.

BOILER TRANSITION (MEARZ7.BVT): From over MEARZ on BVT R-133 to BVT VORTAC.

MARION TRANSITION (MEARZ7.MZZ): From over MEARZ on MZZ R-227 to MZZ VOR/DME.

EC-2, 28 NOV 2024 to 26 DEC 2024

EC-2, 28 NOV 2024 to 26 DEC 2024