

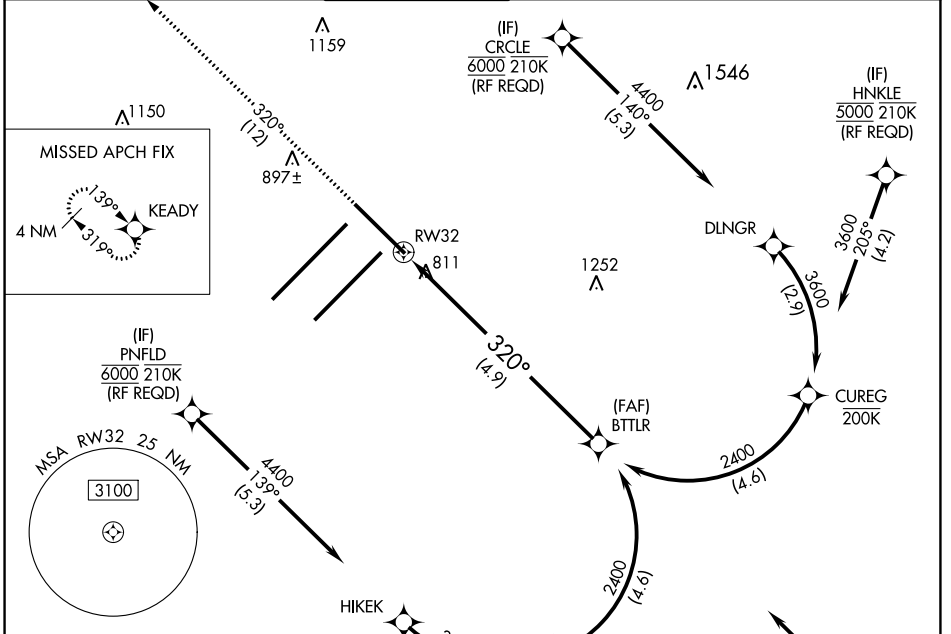
APP CRS	Rwy Idg	7278
320°	TDZE	793
	Apt Elev	796

RNAV (RNP) Z RWY 32

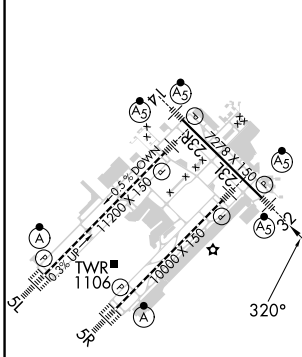
INDIANAPOLIS INTL (IND)

	For uncompensated Baro-VNAV systems, procedure NA below -18°C (2°F) or above 54°C (130°F). GPS required.	MALSR 	MISSED APPROACH: Climb to 3000 on track 320° to KEADY and hold.

D-ATIS 134.25	INDIANAPOLIS APP CON 128.175 317.8	INDY TOWER 120.9 257.8	GND CON 121.9	CLNC DEL 128.75 257.8	CPDLC
-------------------------	--	----------------------------------	-------------------------	---------------------------------	-------



ELEV 796	D	TDZE 793
----------	----------	----------



 3000 KEADY VGSi and RNAV glidepath not coincident (VGSi Angle 3.00/TCH 73).	BTTLR 2400 GP 3.00° TCH 53
---	-------------------------------------

See planview for multiple IF locations.			
4.9 NM			
CATEGORY	A	B	C
RNP 0.19 DA		1134/30	341 (400- ² / ₃)
RNP 0.30 DA		1196/45	403 (400- ² / ₃)

HIRL all Rwys
 TDZ/CL Rwys 5L and 5R

AUTHORIZATION REQUIRED

EC-2, 28 NOV 2024 to 26 DEC 2024

EC-2, 28 NOV 2024 to 26 DEC 2024