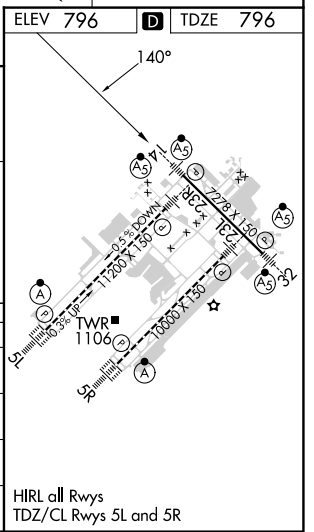
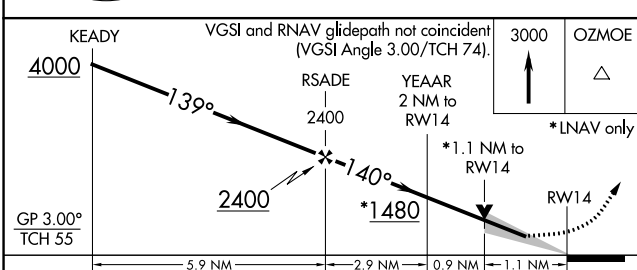
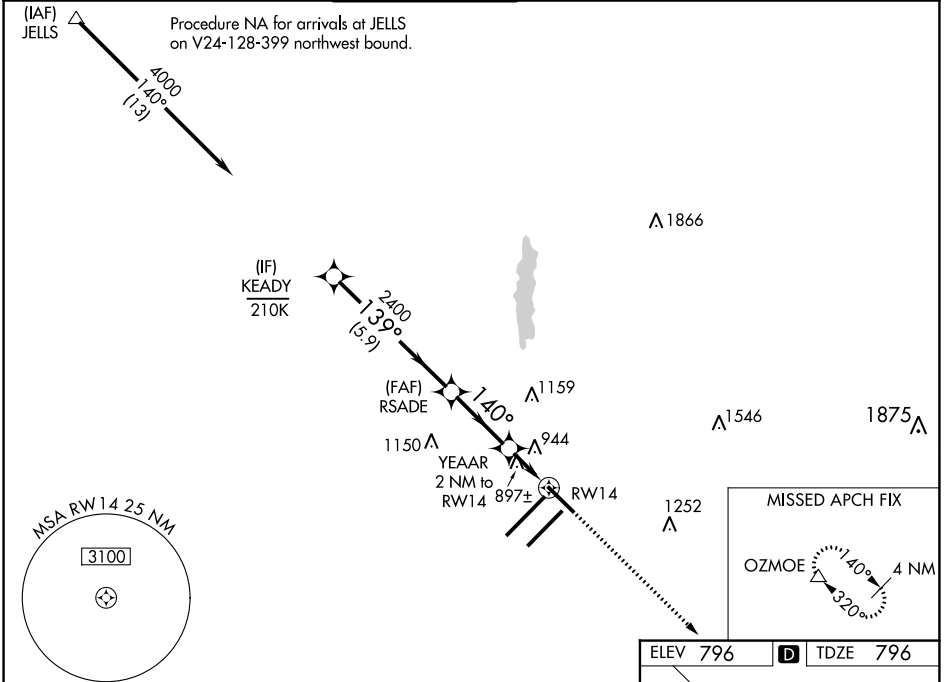


WAAS CH <b>42602</b> <b>W14A</b>	APP CRS <b>140°</b>	Rwy Idg TDZE <b>7278</b> <b>796</b> Apt Elev <b>796</b>
--	------------------------	--

# RNAV (GPS) Y RWY 14

INDIANAPOLIS INTL (IND)

<p>For uncompensated Baro-VNAV systems, LNAV/VNAV NA below -18°C (0°F) or above 54°C (130°F). DME/DME RNP-0.3 NA. **RVR 1800 authorized with use of FD or AP or HUD to DA.</p>	<p>MALSR</p>	<p>MISSED APPROACH: Climb to 3000 direct OZMOE and hold.</p>			
D-ATIS <b>134.25</b>	INDIANAPOLIS APP CON <b>128.175 317.8</b>	INDY TOWER <b>120.9 257.8</b>	GND CON <b>121.9</b>	CLNC DEL <b>128.75 257.8</b>	CPDLC



CATEGORY	A	B	C	D
LPV DA	**996/24 200 (200-½)			
LNAV/VNAV DA	1092/24 296 (300-½)			
LNAV MDA	1200/24	404 (500-½)	1200/40	404 (500-¾)
CIRCLING	1420-1	624 (700-1)	1420-1¾ 624 (700-1¾)	1560-2½ 764 (800-2½)

HIRL all Rwys  
TDZ/CL Rwys 5L and 5R

EC-2, 28 NOV 2024 to 26 DEC 2024

EC-2, 28 NOV 2024 to 26 DEC 2024