

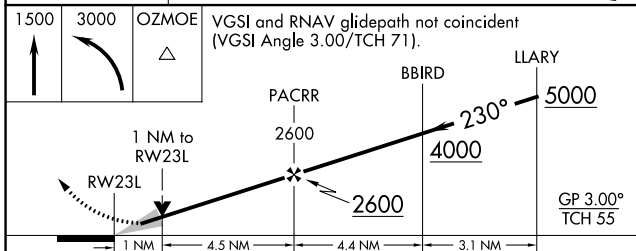
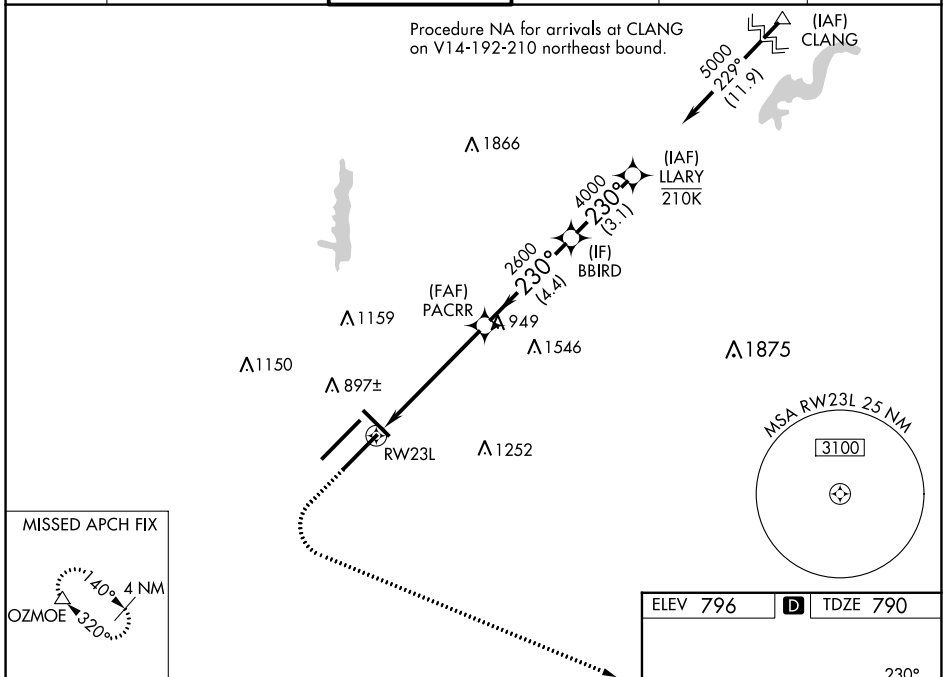
WAAS CH 86406 W23A	APP CRS 230°	Rwy Idg 10000 TDZE 790 Apt Elev 796
--	------------------------	--

RNAV (GPS) Y RWY 23L

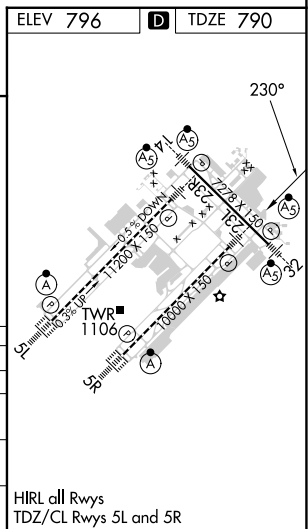
INDIANAPOLIS INTL (IND)

RNP APCH - GPS.	MALSR MISSED APPROACH: Climb to 1500 then climbing left turn to 3000 direct OZMOE and hold.
⚠ LNAV procedure NA during simultaneous operations. Simultaneous approach authorized. Use of FD or AP required during simultaneous operations. For uncompensated Baro-VNAV systems, LNAV/VNAV NA below -20°C or above 54°C. For inop ALS, increase LNAV/VNAV all Cats visibility to RVR 4500. * RVR 1800 authorized with use of FD or AP or HUD to DA.	

D-ATIS 134.25	INDIANAPOLIS APP CON 128.175 317.8	INDY TOWER 120.9 257.8	GND CON 121.9	CLNC DEL 128.75 257.8	CPDLC
-------------------------	--	----------------------------------	-------------------------	---------------------------------	-------



CATEGORY	A	B	C	D
LPV DA*	990/24 200 (200-½)			
LNAV/VNAV DA	1078/24 288 (300-½)			
LNAV MDA	1180/24 390 (400-½)	1180/35 390 (400-¾)		
CIRCLING	1420-1 624 (700-1)	1420-1¾ 624 (700-1¾)	1560-2½ 764 (800-2½)	



EC-2, 28 NOV 2024 to 26 DEC 2024

EC-2, 28 NOV 2024 to 26 DEC 2024