

|  |                        |  |
|--|------------------------|--|
| WAAS<br>CH <b>77706</b><br><b>W23B</b> | APP CRS<br><b>230°</b> | Rwy Idg <b>11200</b><br>TDZE <b>783</b><br>Apt Elev <b>796</b> |
|--|------------------------|--|

# RNAV (GPS) Y RWY 23R

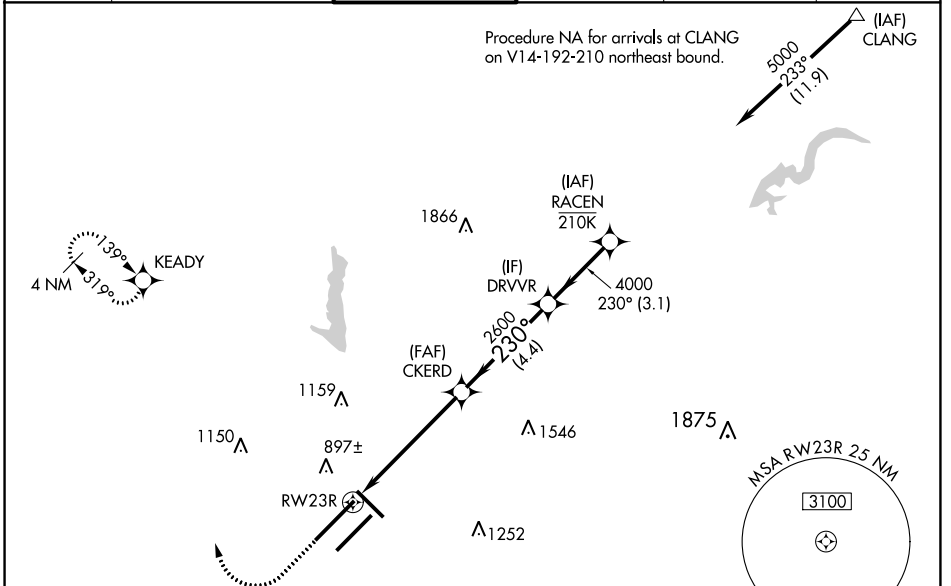
INDIANAPOLIS INTL (IND)

For uncompensated Baro-VNAV systems, LNAV/VNAV NA below -18°C (0°F) or above 54°C (130°F). DME/DME RNP-0.3 NA. For inoperative ALS, increase LNAV Cat C/D visibility to RVR 6000. Simultaneous approach authorized. LNAV procedure NA during simultaneous operations. Use of FD or AP providing RNAV track guidance required during simultaneous operations.  
**\*\* RVR 1800 authorized with use of FD or AP or HUD to DA.**



MISSED APPROACH:  
Climb to 1500 then climbing right turn to 3000 direct KEADY and hold.

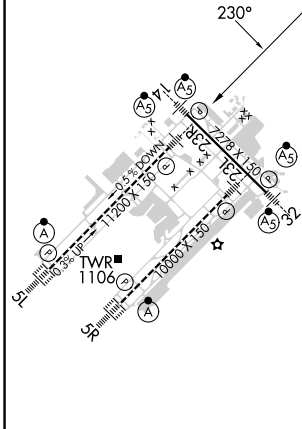
|                         |  |                                  |                         |                                 |       |
|-------------------------|--|----------------------------------|-------------------------|---------------------------------|-------|
| D-ATIS<br><b>134.25</b> | INDIANAPOLIS APP CON<br><b>128.175 317.8</b> | INDY TOWER<br><b>120.9 257.8</b> | GND CON<br><b>121.9</b> | CLNC DEL<br><b>128.75 257.8</b> | CPDLC |
|-------------------------|--|----------------------------------|-------------------------|---------------------------------|-------|



EC-2, 28 NOV 2024 to 26 DEC 2024

EC-2, 28 NOV 2024 to 26 DEC 2024

|          |          |          |
|----------|----------|----------|
| ELEV 796 | <b>D</b> | TDZE 783 |
|----------|----------|----------|



|                   |      |        |  |        |
|-------------------|------|--------|--|--------|
| 1500              | 3000 | KEADY  | VGSi and RNAV glidepath not coincident (VGSi Angle 3.00/TCH 71). |        |
| *LNAV only        |      | CKERD  | DRVVR  | RACEN  |
| *1.1 NM to RWY23R |      | 2600   | 4000   | 5000   |
| RWY23R            |      | 2600   |  |        |
| 1.1 NM            |      | 4.4 NM | 4.4 NM   | 3.1 NM |

| CATEGORY          | A        | B           | C                       | D                       |
|-------------------|----------|-------------|-------------------------|-------------------------|
| LPV DA            | **983/24 |             | 200 (200-½)             |                         |
| LNAV/VNAV DA      | 1165/40  |             | 382 (400-¾)             |                         |
| LNAV MDA          | 1200/24  | 417 (500-½) | 1200/40                 | 417 (500-¾)             |
| <b>C</b> CIRCLING | 1420-1   | 624 (700-1) | 1420-1¾<br>624 (700-1¾) | 1560-2½<br>764 (800-2½) |

HIRL all Rwys  
TDZ/CL Rwys 5L and 5R  
INDIANAPOLIS, INDIANA  
Amdt 4A 17AUG17

39°43'N-86°18'W

# RNAV (GPS) Y RWY 23R

INDIANAPOLIS INTL (IND)