

|  |                        |  |
|--|------------------------|--|
| WAAS<br>CH <b>45706</b><br><b>W05A</b> | APP CRS<br><b>050°</b> | Rwy Idg <b>11200</b><br>TDZE <b>747</b><br>Apt Elev <b>796</b> |
|--|------------------------|--|

# RNAV (GPS) Y RWY 5L

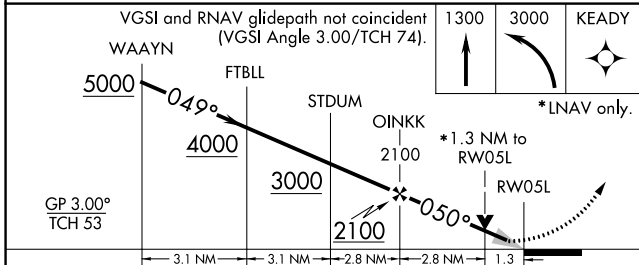
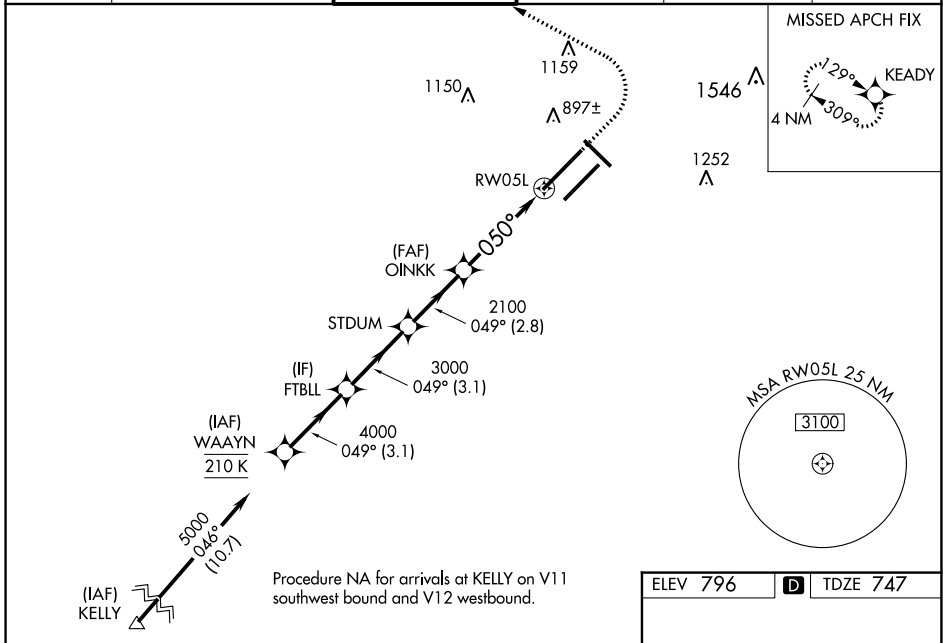
INDIANAPOLIS INTL (IND)

**T** **A** For uncompensated Baro-VNAV systems, LNAV/VNAV NA below -18°C (0°F) or above 54°C (130°F). DME/DME RNP-0.3 NA. Simultaneous approach authorized. LNAV procedure NA during simultaneous operations. Use of FD or AP providing RNAV track guidance required during simultaneous operations. For inoperative ALS, increase LNAV/VNAV all Cats visibility to 1¼ SM and increase LNAV Cat C/D visibility to 1½ SM.

ALS-F-2

MISSED APPROACH: Climb to 1300 then climbing left turn to 3000 direct KEADY and hold.

|                         |  |   |                         |                                 |       |
|-------------------------|--|---|-------------------------|---------------------------------|-------|
| D-ATIS<br><b>134.25</b> | INDIANAPOLIS APP CON<br><b>128.175 317.8</b> | <b>INDY TOWER</b><br><b>120.9 257.8</b> | GND CON<br><b>121.9</b> | CLNC DEL<br><b>128.75 257.8</b> | CPDLC |
|-------------------------|--|---|-------------------------|---------------------------------|-------|



|                   |         |             |                        |                         |
|-------------------|---------|-------------|------------------------|-------------------------|
| CATEGORY          | A       | B           | C                      | D                       |
| LPV DA            | 947/18  |             | 200 (200-½)            |                         |
| LNAV/VNAV DA      | 1136/45 |             | 389 (400-¾)            |                         |
| LNAV MDA          | 1220/24 | 473 (500-½) | 1220/50                | 473 (500-1)             |
| <b>C</b> CIRCLING | 1420-1  | 624 (700-1) | 1420-1¾<br>624 (700-¾) | 1560-2½<br>764 (800-2½) |

ELEV 796 **D** TDZE 747

HIRL all Rwys  
TDZ/CL Rwys 5L and 5R

EC-2, 28 NOV 2024 to 26 DEC 2024

EC-2, 28 NOV 2024 to 26 DEC 2024