

HI-TACAN Z RWY 10

TACAN Chan 19	NIP	APCH CRS 087°	CRS	Rwy ldg TDZE Arpt Elev	8006 21 23
-------------------------	-----	-------------------------	-----	------------------------------	---------------------------------------

[USN]

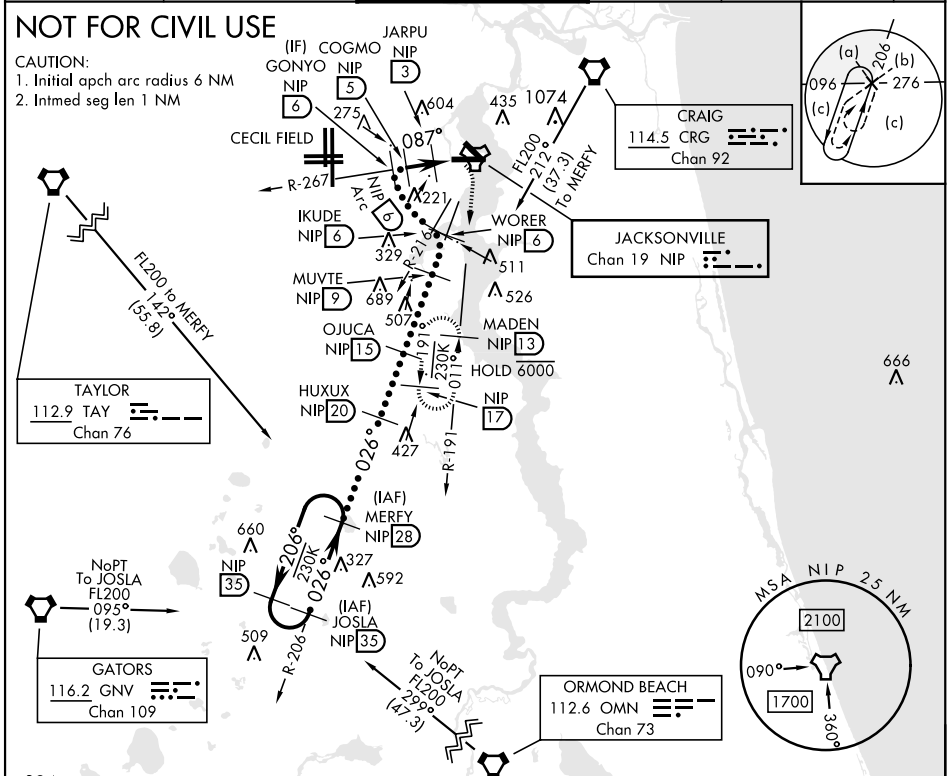
JACKSONVILLE NAS (TOWERS FLD) (KNIP)

ALSIF-1

MISSED APPROACH: Climb to 2000 direct NIP TACAN, outbound R-191 to MADEN and hold.

* When ALS inop, increase CAT CDE vis to 1½ miles.

ATIS 124.35 290.425	APP CON 127.775 377.075	NAVY JACKSONVILLE TOWER 125.15 (CTAF) 340.2	GND CON 128.6 336.4	CLNC DEL 134.775 0353.675	ASR/ PAR
-------------------------------	-----------------------------------	---	-------------------------------	-------------------------------------	-------------



384 EMERG SAFE ALT 100 NM 2800	MERFY R-206 HUXUX 20 OJUCA 15 WORER R-206 6 IKUDE R-216 6 GONYO R-267 6 COGMO 5 JARPU 3 TACAN 1.9 MADEN 13	ELEV 23 TDZE 21 Rwy 10 ldg 8006' Rwy 14 ldg 3244'	
CATEGORY S-10 * CIRCLING	C 420-¾ 560-1½ 537 (600-1½)	D 399 (400-¾) 780-2½ 757 (800-2½)	E 920-3 897 (900-3)

JACKSONVILLE, FLORIDA 30°14'N-81°41'W JACKSONVILLE NAS (TOWERS FLD) (KNIP)

HI-TACAN Z RWY 10

SE-3, 28 NOV 2024 to 26 DEC 2024

SE-3, 28 NOV 2024 to 26 DEC 2024