

JACKSONVILLE, FLORIDA

RNAV (GPS) Z RWY 10

WAAS CH 42020 W10A	APCH CRS 096°	Rwy ldg TDZE 21 Arprt Elev 23
---------------------------------	-------------------------	---

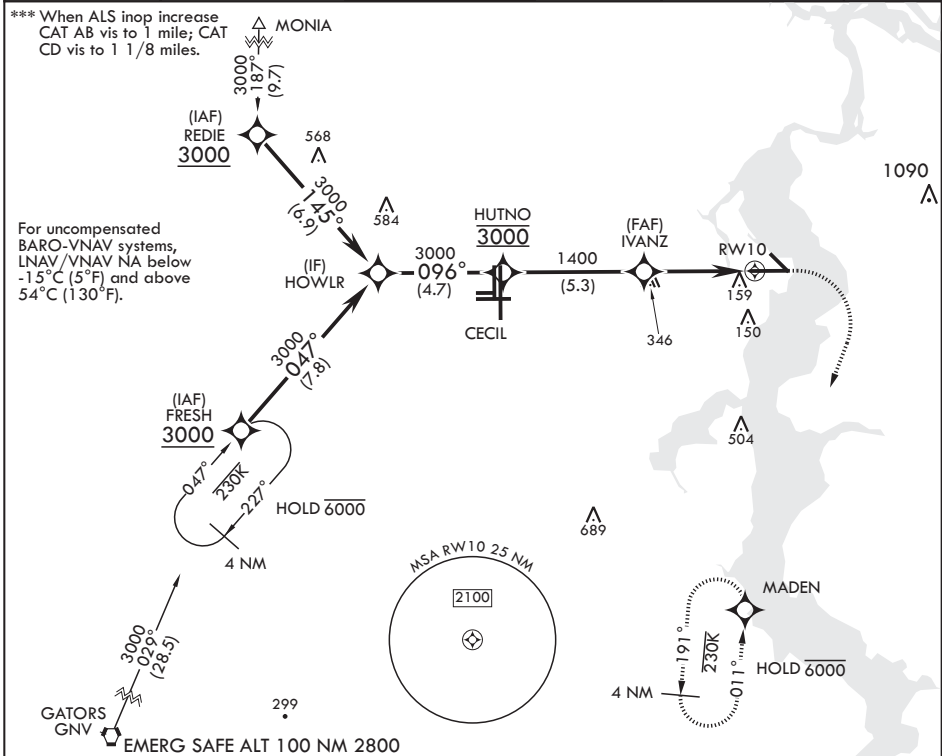
- (USN)

JACKSONVILLE NAS (TOWERS FLD) (KNIP)

RNP APCH	ALS-F1	MISSED APPROACH: Climb to 600 then climbing right turn to 2000 direct MADEN and hold.
----------	--------	---

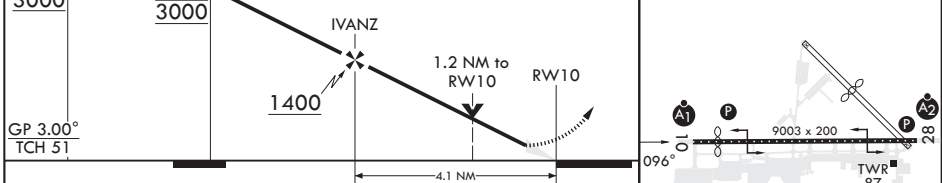
▼ * When ALS inop increase CAT ABCD vis to 3/4 mile.
****** When ALS inop, increase CAT ABCD vis to 1 mile.

ATIS 124.35 290.425	APP CON/DEP CON 127.775 377.075	TOWER 125.15 (CTAF) 340.2	GND CON 128.6 336.4	CLNC DEL 134.775 353.675	ASR/PAR
-------------------------------	---	-------------------------------------	-------------------------------	------------------------------------	---------



HOWLR 3000	HUTNO 3000	IVANZ 1400	MADEN ELEV 23	TDZE 21
------------	------------	------------	---------------	---------

GP 3.00° TCH 51
 Rwy 10 ldg 8006'
 Rwy 14 ldg 3244'



CATEGORY	A	B	C	D
LPV DA*	221-1/2	200	(200-1/2)	
LNAV/VNAV DA**	387-5/8	366	(400-5/8)	
LNAV MDA***	440-1/2	419 (500-1/2)	440-3/4	419 (500-3/4)
CIRCLING	500-1	477 (500-1)	560-1 1/2 537 (600-1 1/2)	780-2 1/2 757 (800-2 1/2)

HIRL Rwy 10-28

JACKSONVILLE, FLORIDA 30°14'N - 81°41'W JACKSONVILLE NAS (TOWERS FLD) (KNIP)

RNAV (GPS) Z RWY 10

Amdt 1 03NOV22

SE-3, 28 NOV 2024 to 26 DEC 2024

SE-3, 28 NOV 2024 to 26 DEC 2024