

# CHIEF NINE DEPARTURE

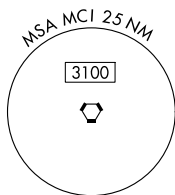
AL-213 (FAA)

CHARLES B WHEELER DOWNTOWN (MKC)  
KANSAS CITY, MISSOURI

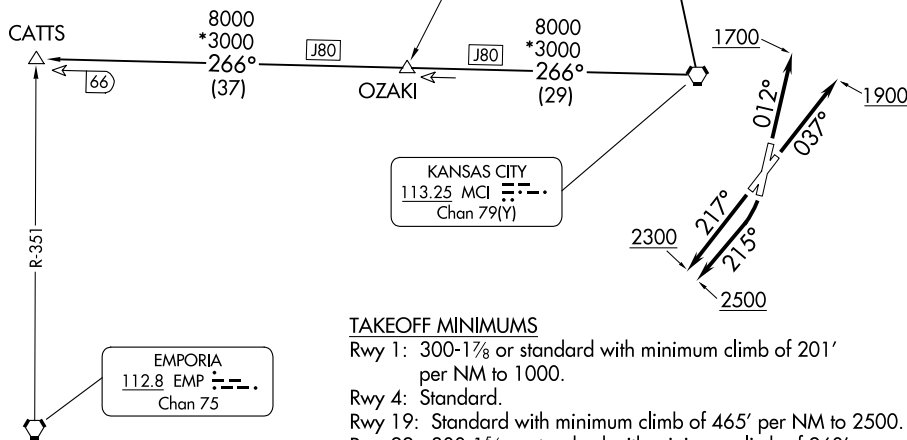
**TOP ALTITUDE:  
10000**

RADAR required.

KANSAS CITY DEP CON  
118.4 307.35  
ATIS  
120.75  
CLNC DEL  
121.9



ST. JOSEPH  
115.5 STJ ---  
Chan 102



KANSAS CITY  
113.25 MCI ---  
Chan 79(Y)

EMPORIA  
112.8 EMP ---  
Chan 75

### TAKEOFF MINIMUMS

- Rwy 1: 300-1 $\frac{3}{8}$  or standard with minimum climb of 201' per NM to 1000.
- Rwy 4: Standard.
- Rwy 19: Standard with minimum climb of 465' per NM to 2500.
- Rwy 22: 300-1 $\frac{3}{8}$  or standard with minimum climb of 260' per NM to 1000.

NOTE: Chart not to scale.

### DEPARTURE ROUTE DESCRIPTION

- TAKEOFF RUNWAY 1: Climb on heading 012° to 1700, thence. . .
  - TAKEOFF RUNWAY 4: Climb on heading 037° to 1900, thence. . .
  - TAKEOFF RUNWAY 19: Climbing right turn heading 215° to 2500, thence. . .
  - TAKEOFF RUNWAY 22: Climb on heading 217° to 2300, thence. . .
- . . . climb on assigned heading for RADAR vectors to appropriate route. Maintain 10000 or as assigned by ATC, expect filed altitude 10 minutes after departure.

CATTs TRANSITION (CHIEF9.CATTs): From over MCI VORTAC on MCI R-266 to CATTs.

ST. JOSEPH TRANSITION (CHIEF9.STJ): From over MCI VORTAC on MCI R-343 and STJ R-160 to STJ VORTAC.