

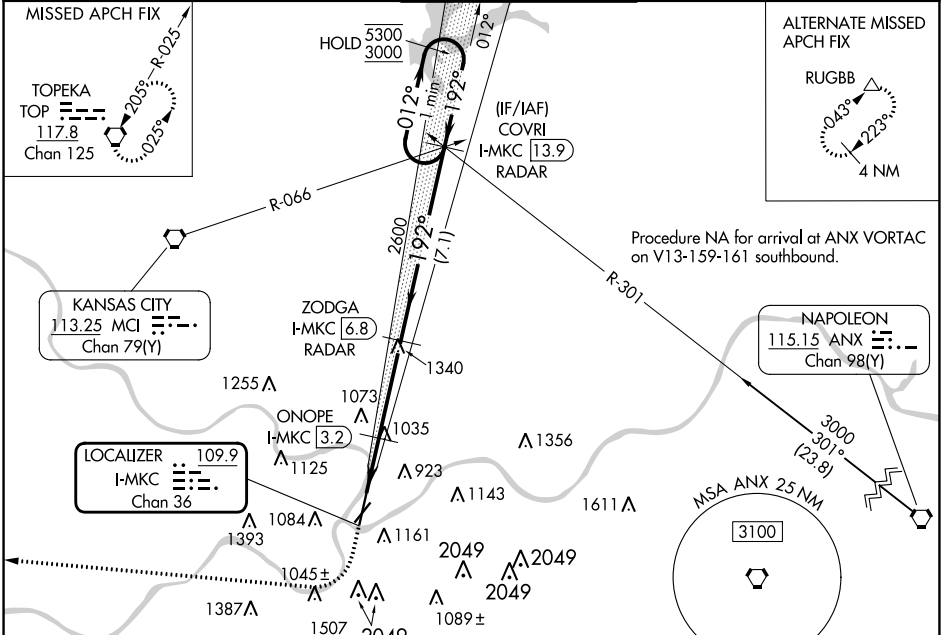
LOC/DME I-MKC 109.9 Chan 36	APP CRS 192°	Rwy Idg 6525 TDZE 754 Apt Elev 757
--	------------------------	---

ILS or LOC RWY 19

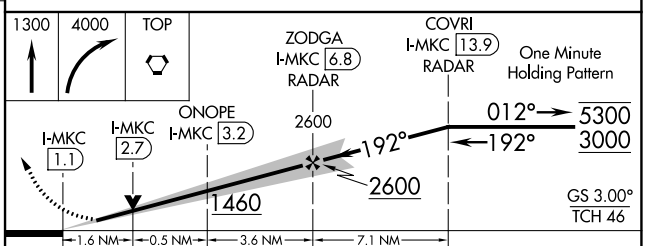
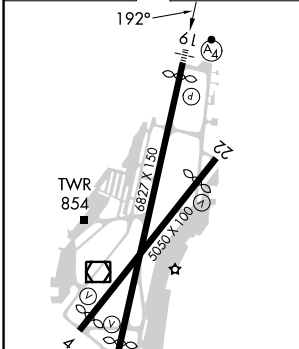
CHARLES B WHEELER DOWNTOWN (MKC)

DME or RADAR required for LOC only. DME or RADAR required for procedure entry.	MALSF 	MISSED APPROACH: Climb to 1300 then climbing right turn to 4000 direct TOP VORTAC and hold.
<p>▼ Circling NA east of Rwy 1-19. Circling NA to Rwy 22. For inop ALS, increase S-LOC 19 Cat C/D visibility to 2 SM. Circling NA for Cat D to Rwy 4. Rwy 19 helicopter visibility reduction below RVR 4000 NA. S-ILS 19 inop table does not apply.</p>		

ATIS 120.75	KANSAS CITY APP CON 118.4 307.35	DOWNTOWN TOWER 133.3 233.7	CLNC DEL 121.9	GND CON 121.9
-----------------------	--	--------------------------------------	--------------------------	-------------------------



ELEV 757	D	TDZE 754
----------	----------	----------



CATEGORY	A	B	C	D
S-ILS 19	1004/40		250 (300-¾)	
S-LOC 19	1460/40 706 (800-¾)	1460/55 706 (800-1)	1460-1⅞ 706 (800-2)	706 (800-1⅞)
C CIRCLING	1460-1 703 (800-1)		1460-2 703 (800-2)	1540-2½ 783 (800-2½)
ONOPE FIX MINIMUMS				
S-LOC 19	1300/40	546 (600-¾)	1300-1⅓	546 (600-1⅓)
C CIRCLING	1380-1 623 (700-1)	1400-1 643 (700-1)	1460-2 703 (800-2)	1540-2½ 783 (800-2½)

FAF to MAP 5.7 NM					
Knots	60	90	120	150	180
Min:Sec	5:42	3:48	2:51	2:17	1:54

NC-3, 28 NOV 2024 to 26 DEC 2024

NC-3, 28 NOV 2024 to 26 DEC 2024