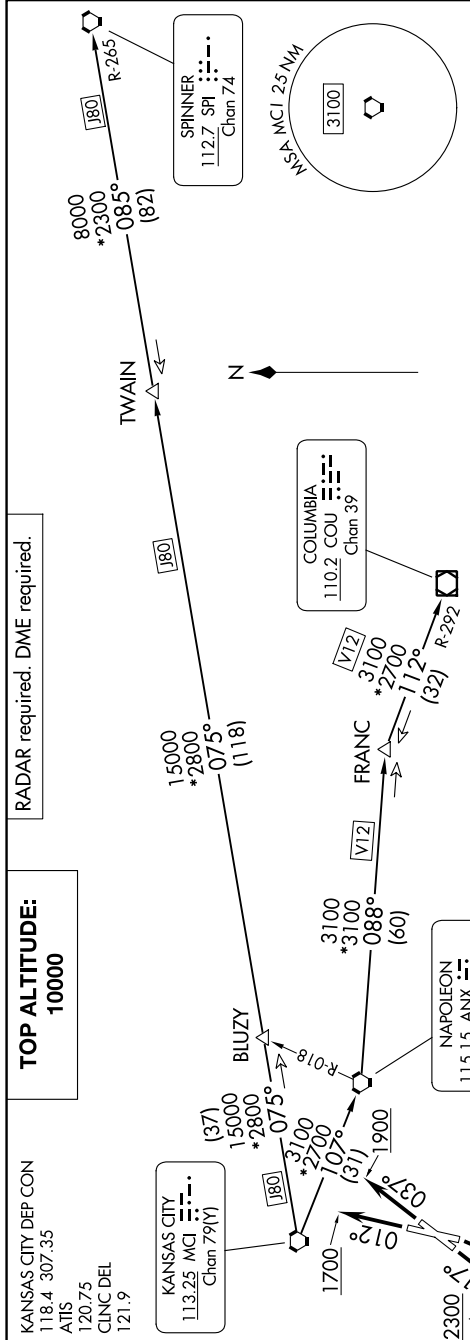


LAKES FIVE DEPARTURE

NC-3, 28 NOV 2024 to 26 DEC 2024



TOP ALTITUDE:
10000

KANSAS CITY DEP CON
118.4 307.35
ATIS
120.75
CLINC DEL
121.9

DEPARTURE ROUTE DESCRIPTION

TAKEOFF RUNWAY 1: Climb on heading 012° to 1700, thence

TAKEOFF RUNWAY 4: Climb on heading 037° to 1900, thence

TAKEOFF RUNWAY 19: Climbing right turn heading 215° to 2500, thence

TAKEOFF RUNWAY 22: Climb on heading 217° to 2300, thence

. . . .climb on assigned heading for RADAR vectors to appropriate route. Maintain 10000 or as assigned by ATIS. Expect filed altitude 10 minutes after departure.

COLUMBIA TRANSITION (LAKES5.COU): From over MCI VORTAC on MCI R-107 to ANX VORTAC, then on ANX R-088 and COU R-292 to COU VOR/DME.

FRANC TRANSITION (LAKES5.FRANC): From over MCI VORTAC on MCI R-107 to ANX VORTAC, then on ANX R-088 to FRANC.

SPINNER TRANSITION (LAKES5.SPI): From over MCI VORTAC on MCI R-107 to SPI R-265 to TWAIN, then on SPI R-265 to SPI VORTAC.

TWAIN TRANSITION (LAKES5.TWAIN): From over MCI VORTAC on MCI R-075 and SPI R-265 to TWAIN.

TAKEOFF MINIMUMS

Rwy 1: 300-17' or standard with minimum climb of 201' per NM to 1000.

Rwy 4: Standard.

Rwy 19: Standard with minimum climb of 465' per NM to 2500.

Rwy 22: 300-1½' or standard with minimum climb of 260' per NM to 1000.

NOTE: Chart not to scale.

NC-3, 28 NOV 2024 to 26 DEC 2024