

ROYAL TWO DEPARTURE

NC-3, 28 NOV 2024 to 26 DEC 2024

RADAR and DME required.

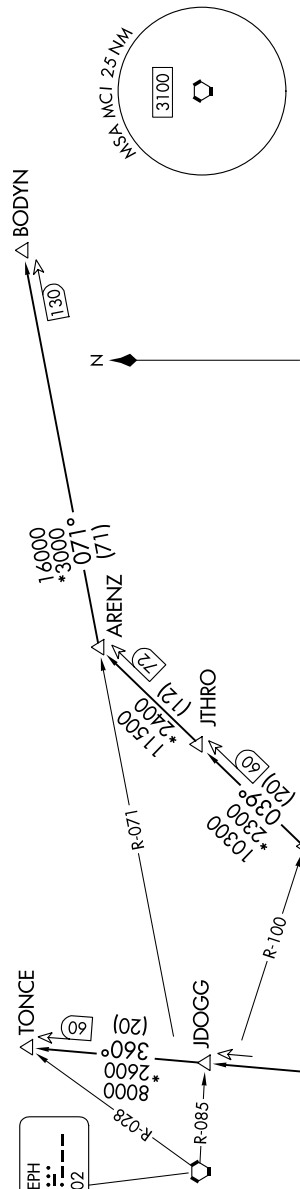
TAKEOFF MINIMUMS
Rwy 1: 300-1 $\frac{1}{2}$ or standard with minimum climb of 201' per NM to 1000.
Rwy 4: Standard.
Rwy 19: Standard with minimum climb of 465'/NM to 2500.
Rwy 22: 300-1 $\frac{1}{2}$ or standard with minimum climb of 260'/NM to 1000.

TOP ALTITUDE:
10000

KANSAS CITY DEP CON
118.4 307.35
ATIS
120.75
CLNC DEL
121.9

ST. JOSEPH
115.5 STJ
Chon 102

KANSAS CITY
113.25 MCI
Chon 79(Y)



DEPARTURE ROUTE DESCRIPTION

- TAKEOFF RUNWAY 1:** Climb on heading 012° to 1700, thence. . . .
- TAKEOFF RUNWAY 4:** Climb on heading 037° to 1900, thence. . . .
- TAKEOFF RUNWAY 19:** Climbing right turn heading 215° to 2500, thence. . . .
- TAKEOFF RUNWAY 22:** Climb on heading 217° to 2300, thence. . . .

. . . .climb on assigned heading for RADAR vectors to appropriate route. Maintain 10000, expect filed altitude 10 minutes after departure.

- ARENZ TRANSITION (ROYAL2.ARENZ):** From over MCI VORTAC on MCI R-039 to ARENZ.
- BODYN TRANSITION (ROYAL2.BODYN):** From over MCI VORTAC on MCI R-039 to ARENZ, then on STJ R-071 to BODYN.
- TONCE TRANSITION (ROYAL2.TONCE):** From over MCI VORTAC on MCI R-360 to TONCE.

NOTE: Chart not to scale.

NC-3, 28 NOV 2024 to 26 DEC 2024

ROYAL TWO DEPARTURE