

KEY WEST, FLORIDA

HI-TACAN Z RWY 4

TACAN NQX Chan 78	APCH CRS 044°	Rwy Idg TDZE Arprt Elev	7001 4 6
-----------------------------	-------------------------	-------------------------------	-------------------------------------

AL-214 [USN] KEY WEST NAS (BOCA CHICA FLD) (KNQX)

RADAR required

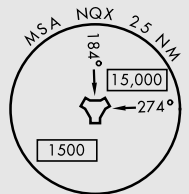
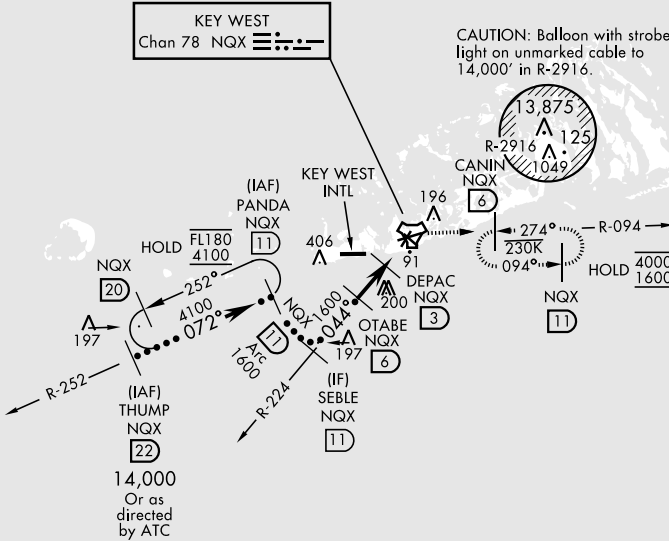
MISSED APPROACH: Climb to 1600 via NQX TACAN R-224 to NQX then via NQX R-094 and hold.

ATIS ★ 307.025	NAVY KEY WEST APP CON 124.025 313.7	NAVY KEY WEST TOWER ★ 118.575 340.25	GND CON 121.7 336.45	CLNC DEL 121.2 357.4	ASR/PAR
--------------------------	---	--	--------------------------------	--------------------------------	---------

CAUTION: Short Intermediate Segment

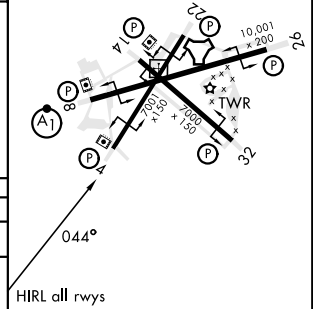
Diagram showing magnetic variation and true headings. True headings are 252°, 044°, and 322°. Magnetic headings are 252°(a), 044°(b), and 322°(c).

CAUTION: Balloon with strobe light on unmarked cable to 14,000' in R-2916.



EMERG SAFE ALT 100 NM 15,000

†from DEPAC to MAP		1600 NQX R-224	NQX	NQX R-094	ELEV 6	TDZE 4
<p>THUMP R-252 (22) PANDA R-252 (11) SEBLE R-224 (11) OTABE (6) DEPAC (3) TACAN HEVEL (1.8)</p> <p>14,000 Or as directed by ATC 072° 4100 1600 Arc 044° 1600 640 0.7</p> <p>3.04° TCH 35 3.00/TCH 50</p> <p>3 NM 1.2 NM</p>						
CATEGORY	C	D	E			
S-4	360-1	356 (400-1)				
CIRCLING	500-1½ 494 (500-1½)	560-2	554 (600-2)			



KEY WEST, FLORIDA

24°34'N-81°41'W KEY WEST NAS (BOCA CHICA FLD) (KNQX)

Amdt 4 23FEB23

HI-TACAN Z RWY 4

SE-3, 28 NOV 2024 to 26 DEC 2024

SE-3, 28 NOV 2024 to 26 DEC 2024