

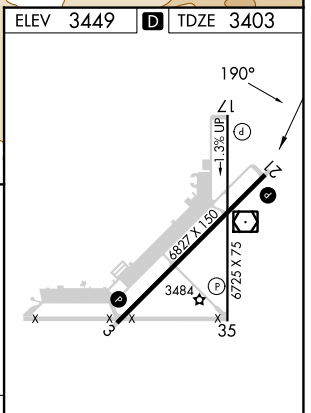
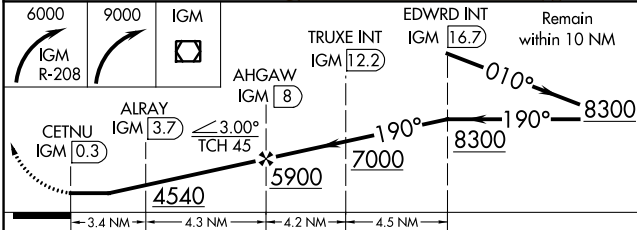
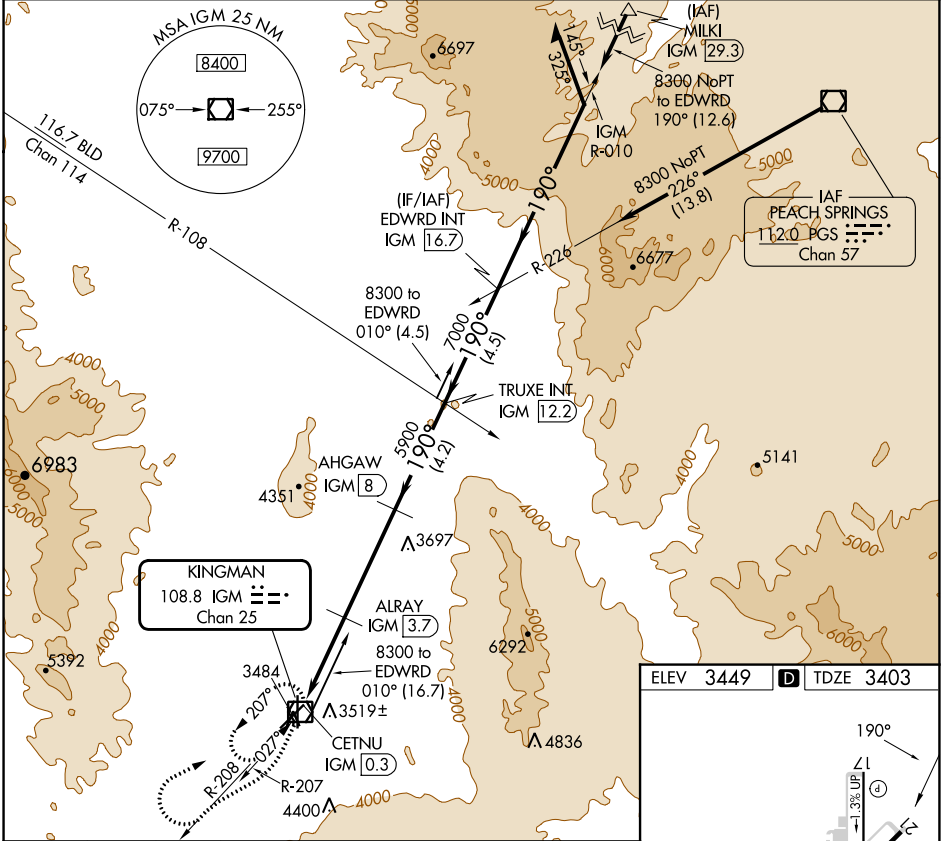
| | | |
|--|------------------------|--|
| VOR/DME IGM 108.8 Chan 25 | APP CRS 190° | Rwy Idg TDZE Apt Elev 6827 3403 3449 |
|--|------------------------|--|

VOR/DME RWY 21

KINGMAN (IGM)

⚠ Circling Rwy 35 NA at night. **⚠** MISSED APPROACH: Climbing right turn to 6000 via IGM VOR/DME R-208 then climbing right turn to 9000 direct IGM VOR/DME and hold.

| | | |
|------------------------|---|--|
| ASOS 119.275 | LOS ANGELES CENTER 124.85 319.2 | UNICOM 122.8 (CTAF) 📻 |
|------------------------|---|--|



| CATEGORY | A | B | C | D |
|----------|-----------------------|-----------------------|-------------------------|-------------------------|
| S-21 | 3880-1 | 477 (500-1) | 3880-1¼ 477 (500-1¼) | 3880-1½ 477 (500-1½) |
| CIRCLING | 3980-1 531 (600-1) | 4100-1 651 (700-1) | 4420-3 971 (1000-3) | 5340-3 1891 (2000-3) |

MIRL Rwy 3-21 and 17-35 **📻**
REIL Rwy 3 and 21 **📻**

SW-4, 28 NOV 2024 to 26 DEC 2024

SW-4, 28 NOV 2024 to 26 DEC 2024