

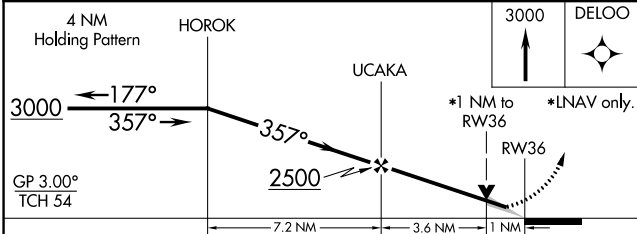
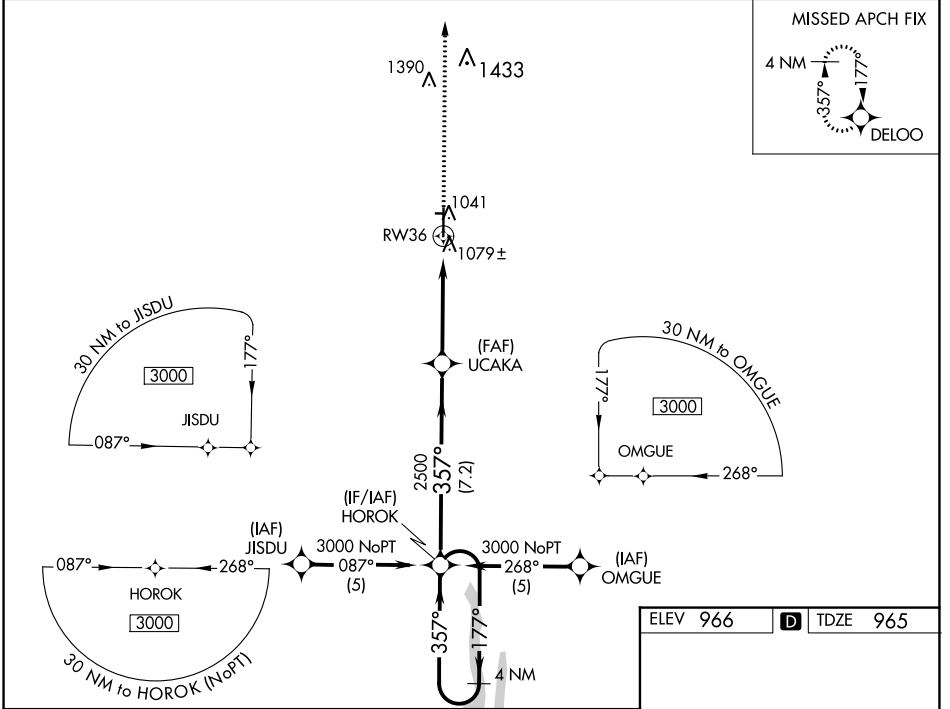
WAAS CH <b>70513</b> <b>W36A</b>	APP CRS <b>357°</b>	Rwy Idg TDZE Apt Elev	<b>6005</b> <b>965</b> <b>966</b>
--	------------------------	-----------------------------	---

# RNAV (GPS) RWY 36

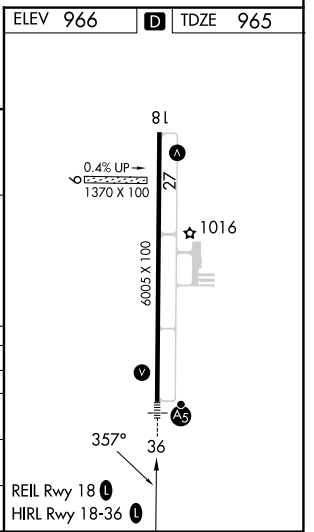
KIRKSVILLE RGNL (IRK)

RNP APCH.	MALSR	MISSED APPROACH: Climb to 3000 direct DELOO and hold.
Circling NA to Rws 9 and 27. For uncompensated Baro-VNAV systems, LNAV/VNAV NA below -16°C or above 46°C.		

ASOS <b>121.125</b>	KANSAS CITY CENTER <b>132.6 370.9</b>	UNICOM <b>122.8 (CTAF)</b>
------------------------	--	-------------------------------



CATEGORY	A	B	C	D
LPV DA		1165-1/2	200 (200-1/2)	
LNAV/VNAV DA		1349-3/4	384 (400-3/4)	
LNAV MDA	1340-1/2	375 (400-1/2)		1340-1 375 (400-1)
CIRCLING	1400-1 434 (500-1)	1440-1 474 (500-1)	1460-1 1/2 494 (500-1 1/2)	1540-2 574 (600-2)



NC-3, 28 NOV 2024 to 26 DEC 2024

NC-3, 28 NOV 2024 to 26 DEC 2024