

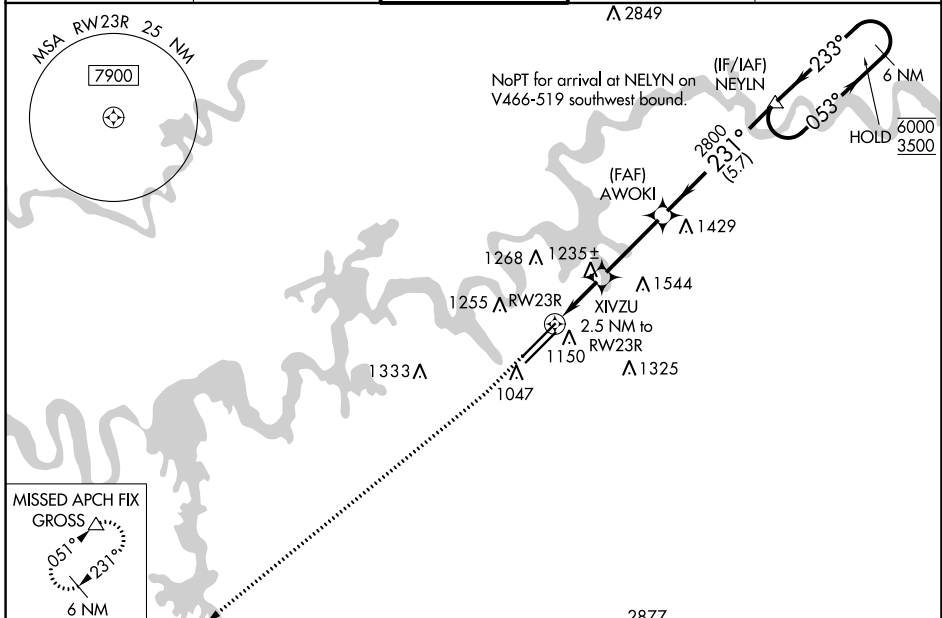
WAAS CH 81902 W23A	APP CRS 231°	Rwy Idg TDZE Apt Elev	9495 984 986
--	------------------------	-----------------------------	---

RNAV (GPS) RWY 23R

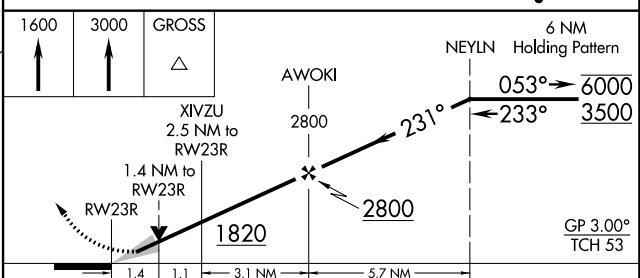
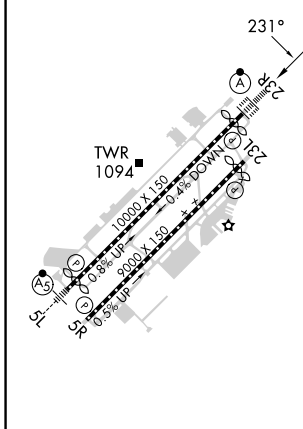
MC GHEE TYSON (T'YS)

RNP APCH - GPS.		ALSIF-2	MISSED APPROACH: Climb to 1600 then climb to 3000 direct GROSS and hold.
<p>For uncompensated Baro-VNAV systems, LNAV/VNAV NA below -10°C or above 54°C. For inop ALS, increase LNAV Cat C/D visibility to 1½ SM.</p>			

ATIS 128.35	KNOXVILLE APP CON 123.9 360.8	KNOXVILLE TOWER 121.2 257.8	GND CON 121.9 348.6	CLINC DEL 121.65
-----------------------	---	---------------------------------------	-------------------------------	----------------------------



ELEV	986	D	TDZE	984
------	-----	----------	------	-----



	1.4	1.1	3.1 NM	5.7 NM	
CATEGORY	A		B	C	D
LPV DA	1184/18		200 (200-½)		
LNAV/VNAV DA	1529-1½		545 (600-1½)		
LNAV MDA	1500/24	516 (600-½)		1500/55	516 (600-1)
C CIRCLING	1500-1 514 (600-1)	1560-1 574 (700-1)	1660-2 674 (700-2)	1900-3 914 (1000-3)	

HIRL Rwy 5L-23R and 5R-23L
REIL Rwy 5R and 23L
TDZ/CL Rwy 5R and 23R

SE-1, 28 NOV 2024 to 26 DEC 2024

SE-1, 28 NOV 2024 to 26 DEC 2024