

APP CRS 217°	Rwy Idg 5199
	TDZE 654
	Apt Elev 656

RNAV (GPS) RWY 22

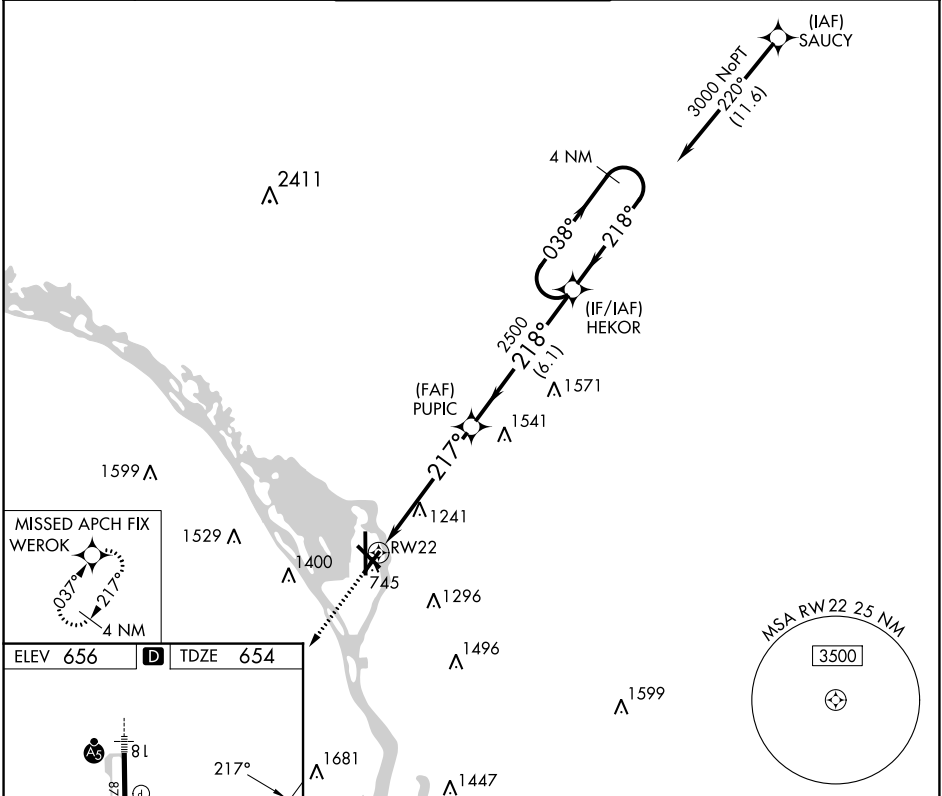
LA CROSSE RGNL (LSE)

RNP APCH.

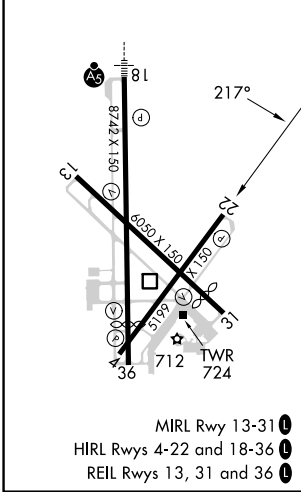
⚠ When local altimeter setting not received, use Winona altimeter setting and increase all MDA 60 feet. Rwy 22 helicopter visibility reduction below 1 SM NA.
⚠ -22°C

MISSED APPROACH: Climb to 3100 direct WEROK and hold.

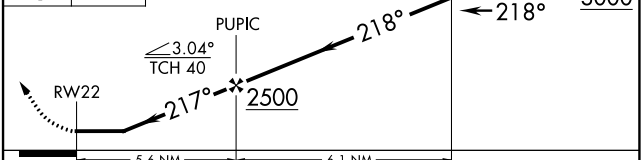
ATIS 124.95	MINNEAPOLIS CENTER 128.6 363.0	LA CROSSE TOWER ★ 118.45 (CTAF) 251.075	GND CON 121.8	UNICOM 122.95
-----------------------	--	---	-------------------------	-------------------------



ELEV 656	D	TDZE 654
----------	----------	----------



3100	WEROK	VGSI and descent angles not coincident (VGSI Angle 4.00/TCH 28).	HEKOR	4 NM Holding Pattern
------	-------	--	-------	----------------------



CATEGORY	A	B	C	D
LNAV MDA	1820-1/4 1166 (1200-1/4)	1820-1/2 1166 (1200-1/2)	1820-3	1166 (1200-3)
C CIRCLING	1820-1/4 1164 (1200-1/4)	1820-1/2 1164 (1200-1/2)	1820-3	1164 (1200-3)

EC-3, 28 NOV 2024 to 26 DEC 2024

EC-3, 28 NOV 2024 to 26 DEC 2024