

LOC I-LAF 110.3	APP CRS 100°	Rwy Idg 6600
		TDZE 601
		Apt Elev 606

ILS or LOC RWY 10

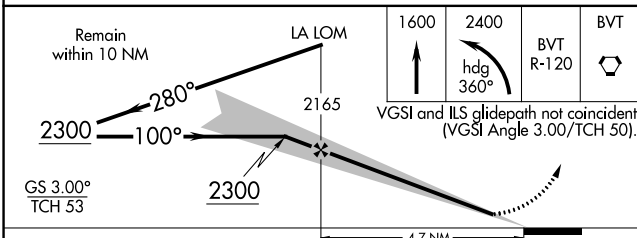
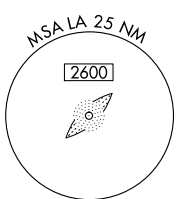
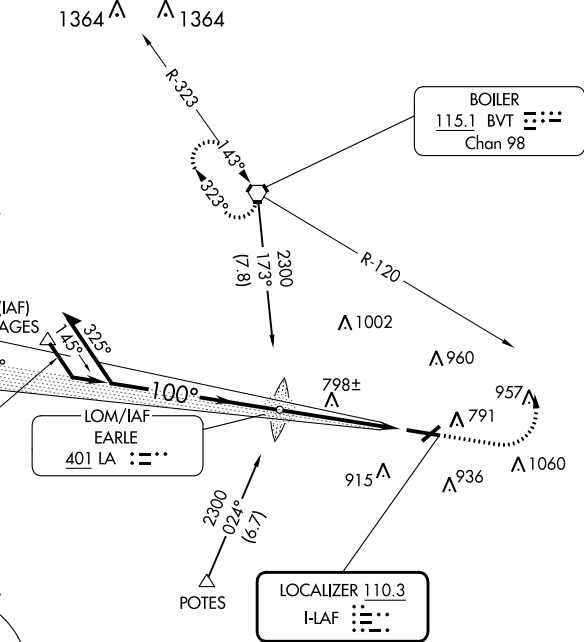
PURDUE UNIVERSITY (LAF)

	Circling Rwy 23 NA at night.		MISSED APPROACH: Climb to 1600 then climbing left turn to 2400 on heading 360° and BVT VORTAC R-120 to BVT VORTAC and hold.

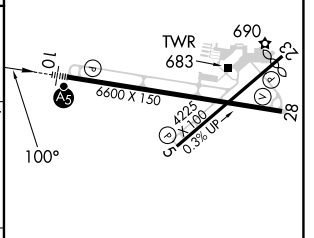
ATIS 127.75	GRISSOM APP CON * 123.85 291.675	LAFAYETTE TOWER * 119.6 (CTAF) 0 343.625	GND CON 121.9 343.625	UNICOM 122.95
-----------------------	--	--	---------------------------------	-------------------------

ALTERNATE MISSED APCH FIX (ADF required)

EARLE
401 LA ::::



ELEV 606	D	TDZE 601
----------	----------	----------



CATEGORY	A	B	C	D
S-ILS 10	801-½ 200 (200-½)			
S-LOC 10	1060-½ 459 (500-½)		1060-¾ 459 (500-¾)	1060-1 459 (500-1)
CIRCLING	1160-1 554 (600-1)		1320-2 714 (800-2)	1420-2¾ 814 (900-2¾)

FAF to MAP 4.7 NM					
Knots	60	90	120	150	180
Min:Sec	4:42	3:08	2:21	1:53	1:34

HIRL Rwy 10-28 **L**

REIL Rwys 5, 23 and 28 **L**

MIRL Rwy 5-23 **L**

EC-2, 28 NOV 2024 to 26 DEC 2024

EC-2, 28 NOV 2024 to 26 DEC 2024