

WAAS CH <b>82103</b> <b>W28A</b>	APP CRS <b>280°</b>	Rwy Idg TDZE Apt Elev	<b>6600</b> <b>598</b> <b>606</b>
--	------------------------	-----------------------------	---

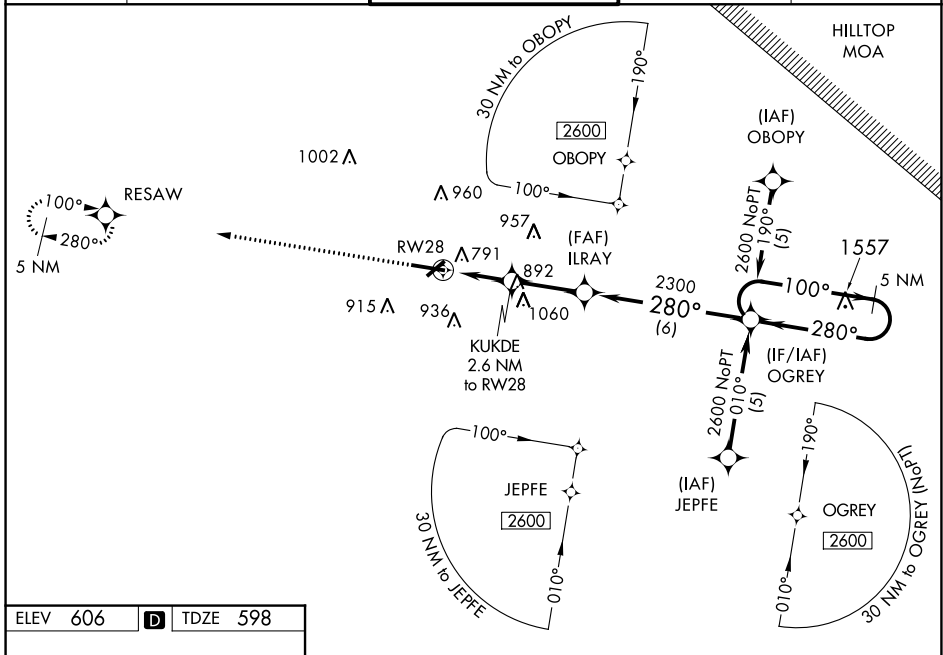
# RNAV (GPS) RWY 28

PURDUE UNIVERSITY (LAF)

When local altimeter setting not received, use Vermilion Rgnl altimeter setting: increase LPV DA to 945 feet; increase LNAV/VNAV DA to 1214 feet; increase all MDAs 100 feet and LNAV Cats C/D visibility 1/4 SM and Circling Cat C visibility 1/2 SM, Cat D visibility 1/4 SM. Baro-VNAV NA when using Vermilion Rgnl altimeter setting. For uncompensated Baro-VNAV systems, LNAV/VNAV NA below -1.6°C (4°F) or above 47°C (116°F). DME/DME RNP-0.3 NA. Rwy 28 helicopter visibility reduction below 3/4 SM NA. Circling Rwy 23 NA at night.

MISSED APPROACH: Climb to 2600 direct RESAW and hold.

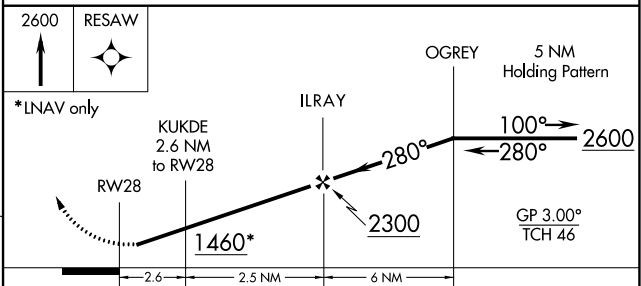
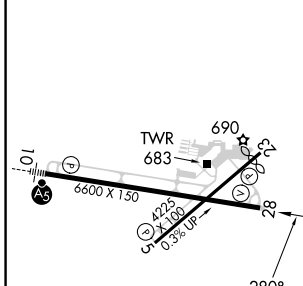
ATIS <b>127.75</b>	GRISSOM APP CON * <b>123.85 291.675</b>	LAFAYETTE TOWER * <b>119.6 (CTAF) 343.625</b>	GND CON <b>121.9 343.625</b>	UNICOM <b>122.95</b>
-----------------------	--	--	---------------------------------	-------------------------



EC-2, 28 NOV 2024 to 26 DEC 2024

EC-2, 28 NOV 2024 to 26 DEC 2024

ELEV 606	<b>D</b>	TDZE 598
----------	----------	----------



CATEGORY	A	B	C	D
LPV DA		856-1	258 (300-1)	
LNAV/VNAV DA		1125-1 3/4	527 (600-1 3/4)	
LNAV MDA	1060-1	462 (500-1)	1060-1 3/8	462 (500-1 3/8)
CIRCLING	1160-1	554 (600-1)	1320-2 714 (800-2)	1420-2 3/4 814 (900-2 3/4)

HIRL Rwy 10-28  
REIL Rwys 5, 23 and 28  
MIRL Rwy 5-23