

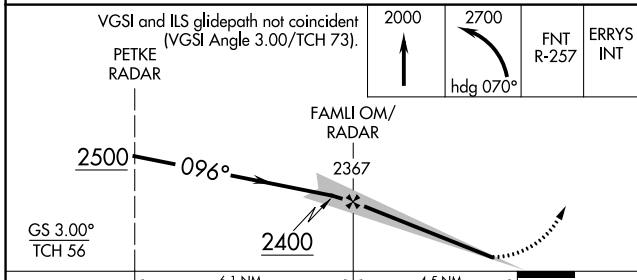
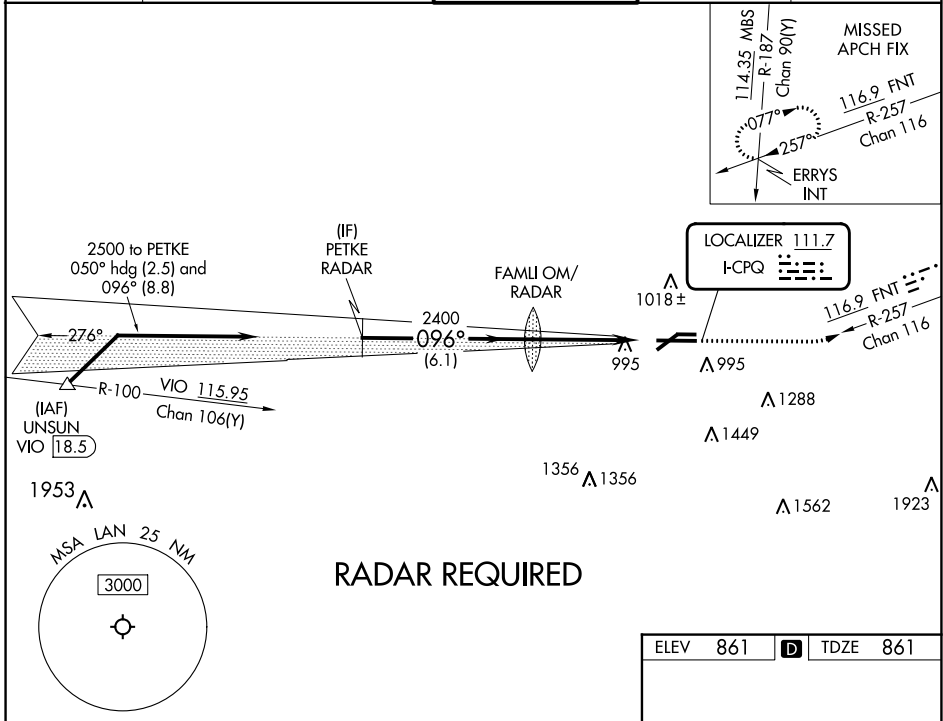
LOC I-CPQ <b>111.7</b>	APP CRS <b>096°</b>	Rwy Idg TDZE Apt Elev	<b>8506</b> <b>861</b> <b>861</b>
---------------------------	------------------------	-----------------------------	---

# ILS or LOC RWY 10R

CAPITAL REGION INTL (LAN)

	Circling Rwy 10L, 28R NA at night. ** RVR 1800 authorized with use of FD or AP or HUD to DA.	MALSR 	MISSED APPROACH: Climb to 2000 then climbing left turn to 2700 on heading 070° and on FNT VORTAC R-257 to ERRYS INT and hold.	
				ATIS <b>119.75</b>

ATIS <b>119.75</b>	GREAT LAKES APP CON * <b>118.65 226.4</b>	LANSING TOWER <b>119.9 240.9</b>	GND CON <b>121.9</b>	CLNC DEL <b>123.675</b>
-----------------------	--	-------------------------------------	-------------------------	----------------------------



ELEV 861	<b>D</b>	TDZE 861
----------	----------	----------

Diagram details: 096°. 101, 100, 3601 X 75, 28R, 28L, 8506 X 150, 5003 X 170, TWR 936.

REIL Rwy 6 and 24	HIRL Rwy 10R-28L	MIRL Rwy 6-24			
FAF to MAP 4.5 NM					
Knots	60	90	120	150	180
Min:Sec	4:30	3:00	2:15	1:48	1:30

CATEGORY	A	B	C	D
S-ILS 10R**	1061/24		200 (200-½)	
S-LOC 10R	1340/24	479 (500-½)	1340/50	479 (500-1)
<b>C</b> CIRCLING	1380-1	519 (600-1)	1600-2 739 (800-2)	1760-3 899 (900-3)

EC-1, 28 NOV 2024 to 26 DEC 2024

EC-1, 28 NOV 2024 to 26 DEC 2024