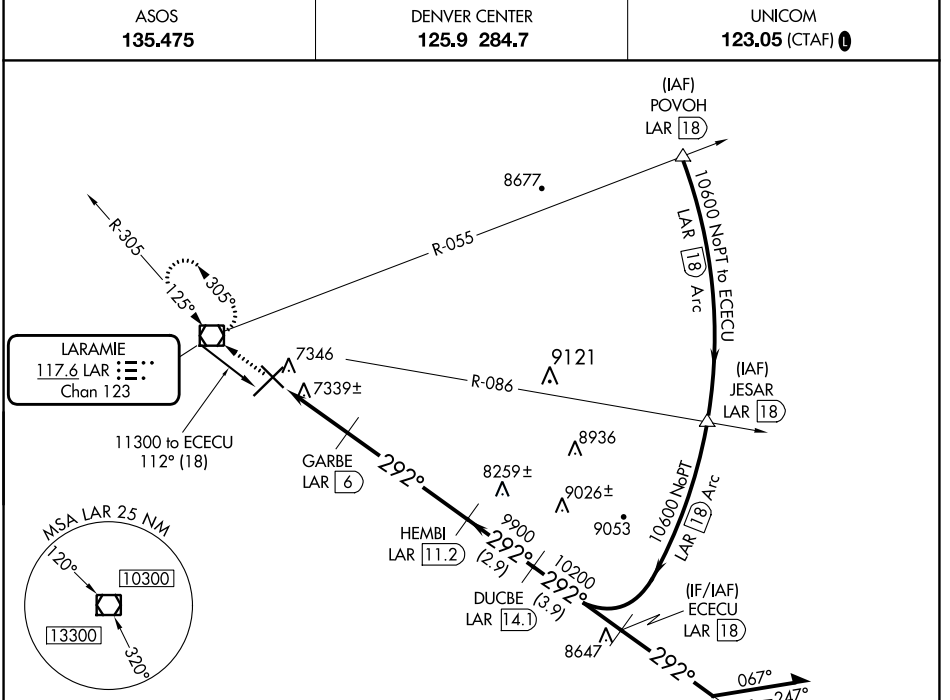


VOR/DME LAR 117.6 Chan 123	APP CRS 292°	Rwy Idg TDZE 6301 7278 Apt Elev 7284
---	------------------------	---

VOR/DME RWY 30

LARAMIE RGNL (LAR)

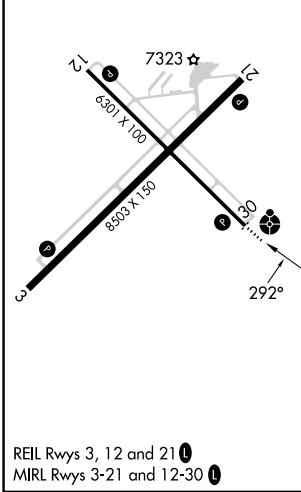
<p>ASOS 135.475</p>	<p>DENVER CENTER 125.9 284.7</p>	<p>UNICOM 123.05 (CTAF)</p>
		<p>ODALS MISSED APPROACH: Climb to 9600 direct LAR VOR/DME and hold, continue climb-in-hold to 9600.</p>



NW-1, 28 NOV 2024 to 26 DEC 2024

NW-1, 28 NOV 2024 to 26 DEC 2024

ELEV 7284	D	TDZE 7278
-----------	---	-----------



9600	LAR	ECECU LAR 18	Remain within 10 NM	
<p>8220</p> <p>3.00° TCH 41</p> <p>9900</p> <p>10200</p> <p>10600</p>	<p>GARBE LAR 6</p> <p>HEMBI LAR 11.2</p> <p>DUCBE LAR 14.1</p>	<p>112°</p> <p>292°</p> <p>292°</p> <p>10600</p>	<p>10600 NoPT to ECECU 337° hdg (5.1) and 292° (7)</p> <p>(DMYIH)</p> <p>(IF/IAF) FLEMS LAR 28.8</p>	
0.9	2 NM	5.2 NM	2.9 NM	3.9 NM
CATEGORY	A	B	C	D
S-30	7600-¾ 322 (400-¾)			7600-1 322 (400-1)
CIRCLING	7660-1 376 (400-1)	7760-1 476 (500-1)	7880-1½ 596 (600-1½)	7920-2 636 (700-2)