

LAS VEGAS, NEVADA

ILS or LOC X RWY 21L

LOC I-DIQ 109.1	APCH CRS 209°	Rwy ldg TDZE Arpt Elev	21L 10,051 1865 1869	21R 10,120 1869
---------------------------	-------------------------	------------------------------	--	-------------------------------------

AL-227 (USAF)

NELLIS AFB (KLSV)

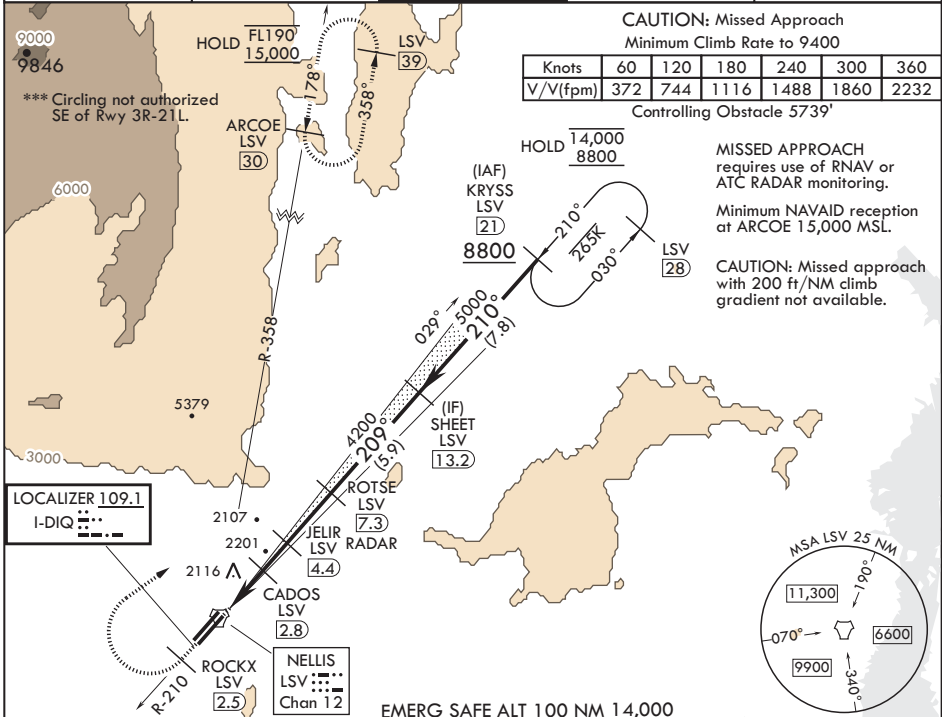
DME or RADAR required.

▲ * When ALS inop, increase RVR to 40, vis to 3/4 mile.
 ** When ALS inop, increase CAT AB RVR to 55, vis to 1 mile, CAT CDE vis to 1 3/8 miles.



MISSED APPROACH: Climb to 15,000, intercept LSV TACAN R-210 to 2.5 DME (ROCKX), then climbing right turn heading 043° to intercept LSV R-358 to ARCOE and hold, climb in hold to 15,000. Missed approach not for civil use.

ATIS 270.1	APP CON 124.95 273.55	TOWER 132.55 327.0	GND CON 121.8 275.8	CLNC DEL 120.9 289.4
----------------------	---------------------------------	------------------------------	-------------------------------	--------------------------------

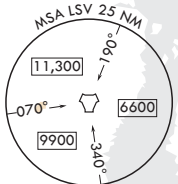


CAUTION: Missed Approach requires use of RNAV or ATC RADAR monitoring. Minimum NAVAID reception at ARCOE 15,000 MSL.

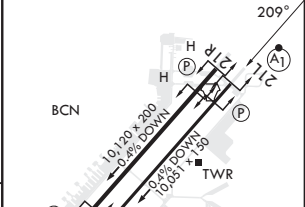
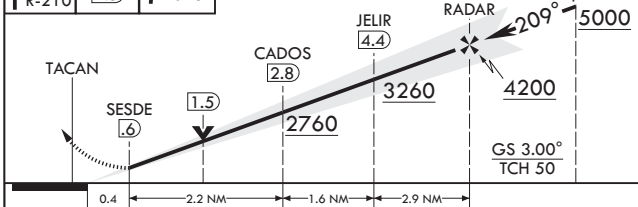
CAUTION: Missed approach with 200 ft/NM climb gradient not available.

Knots	60	120	180	240	300	360
V/V(fpm)	372	744	1116	1488	1860	2232

Controlling Obstacle 5739'



15,000 LSV R-210	ROCKX LSV (2.5)	hdg 043°	VGSI and ILS glidepath not coincident (VGSI angle 3.00/TCH 54).	ROTSE (7.3) RADAR	SHEET (13.2) Intep Lczt	ELEV 1869	TDZE 21L 1865	TDZE 21R 1869
------------------	-----------------	----------	---	-------------------	-------------------------	-----------	---------------	---------------



CATEGORY	A	B	C	D	E
S-ILS 21L*	2065/24		200	(200-1/2)	
S-LOC 21L**	2360/24	495 (500-1/2)	2360/50	495 (500-1)	
SIDESTEP 21R	2380-1	511 (600-1)	2380-1 3/8	511 (600-1 1/4)	
CIRCLING***	2400-1 531 (600-1)	2460-1 591 (600-1)	2560-2 691 (700-2)	2840-3 971 (1000-3)	3140-3 1271 (1300-3)

HIRL all Rwy's

FAF to MAP 6.7 NM					
Knots	60	90	120	150	180
Min:Sec	6:42	4:28	3:21	2:41	2:14

LAS VEGAS, NEVADA
Amdt 11 10AUG23

36°14'N - 115°02'W

NELLIS AFB (KLSV)

ILS or LOC X RWY 21L

SW-4, 28 NOV 2024 to 26 DEC 2024

SW-4, 28 NOV 2024 to 26 DEC 2024