

LOC/DME I-CNL 111.3 Chan 50	APP CRS 047°	Rwy Ldg 7200 TDZE 260 Apt Elev 266
--	------------------------	---

ILS or LOC RWY 4R

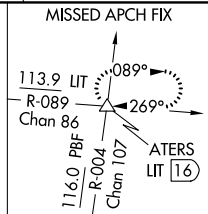
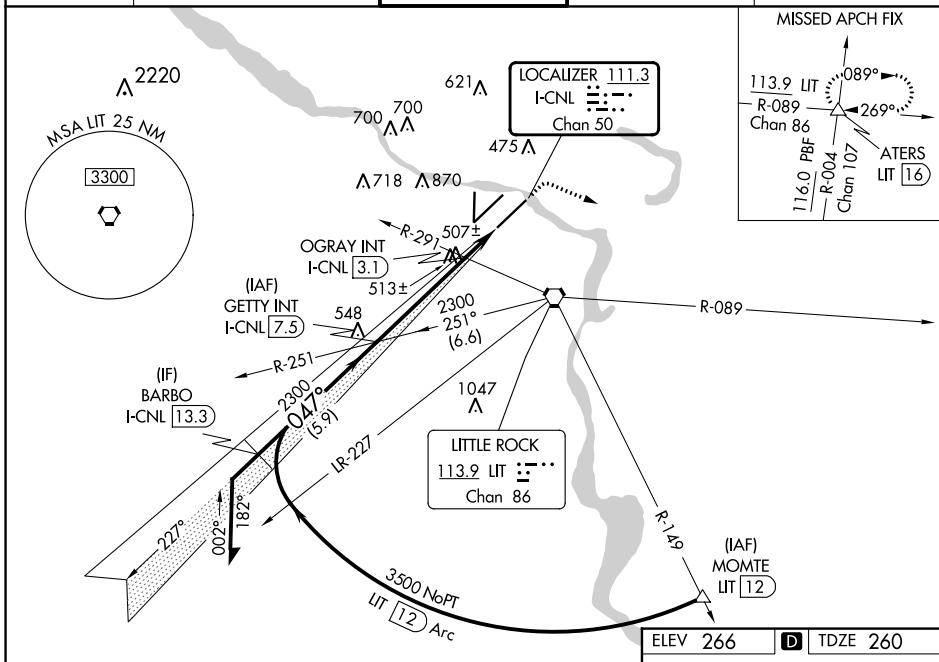
BILL AND HILLARY CLINTON NTL/ADAMS FLD (LIT)

▼ Rwy 4R helicopter visibility reduction below RVR 4000 NA. Simultaneous approach authorized. For inop ALS, increase S-ILS 4R all Cats visibility to RVR 4500. For inop ALS, increase S-LOC 4R Cats A/B visibility to RVR 5500 and Cats C/D visibility to 1 1/4 SM. OGRAY Fix Minimums: For inop ALS, increase S-LOC 4R Cats A/B visibility to RVR 5500 and Cats C/D to 1 1/4 SM.

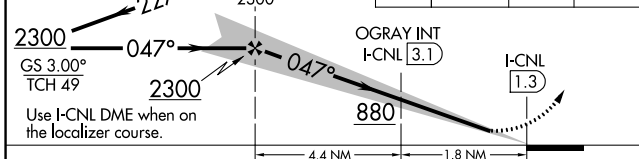


MISSED APPROACH: Climb to 800 then climbing right turn to 4000 on heading 110° and LIT VORTAC R-089 to ATERS INT/LIT 16 DME and hold.

D-ATIS 125.65	LITTLE ROCK APP CON 135.4 353.6	ADAMS TOWER 118.7 257.8	GND CON 121.9 339.8	CLNC DEL 118.95
-------------------------	---	-----------------------------------	-------------------------------	---------------------------

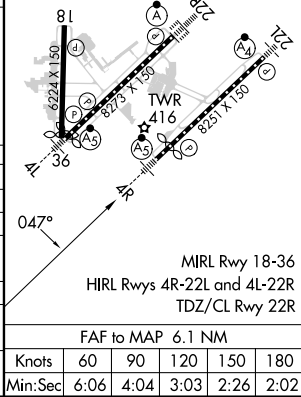


Remain within 10 NM	GETTY INT I-CNL (7.5)	800	4000	LIT R-089	ATERS
---------------------	-----------------------	-----	------	-----------	-------



ELEV 266	D TDZE 260
----------	-------------------

CATEGORY	A	B	C	D
S-ILS 4R		523/40	263 (300-3/4)	
S-LOC 4R	880/40	620 (700-3/4)	880-1 3/8	620 (700-1 1/2)
C CIRCLING	880-1 614 (700-1)	1000-1 734 (800-1)	1180-2 3/4 914 (1000-2 3/4)	1180-3 914 (1000-3)
OGRAY (DUAL VOR RECEIVERS OR DME REQUIRED)				
S-LOC 4R	780/40	520 (600-3/4)	780/55	520 (600-1)
C CIRCLING	820-1 554 (600-1)	1000-1 734 (800-1)	1180-2 3/4 914 (1000-2 3/4)	1180-3 914 (1000-3)



SC-1, 28 NOV 2024 to 26 DEC 2024

SC-1, 28 NOV 2024 to 26 DEC 2024