

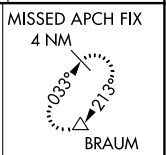
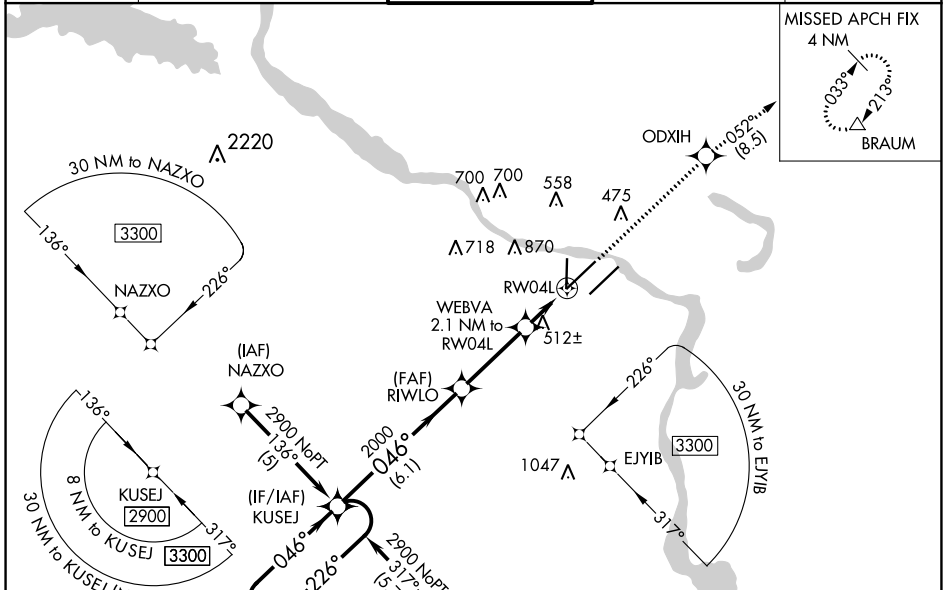
WAAS CH <b>90411</b> <b>W04A</b>	APP CRS <b>046°</b>	Rwy Idg <b>7976</b> TDZE <b>258</b> Apt Elev <b>266</b>
--	------------------------	---

# RNAV (GPS) RWY 4L

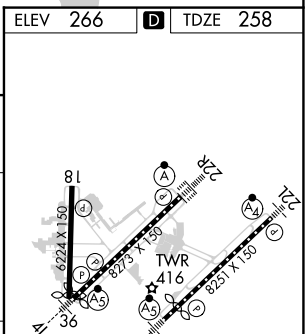
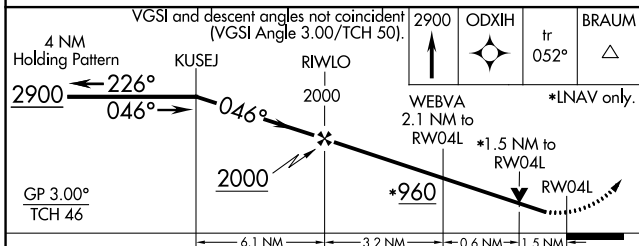
BILL AND HILLARY CLINTON NTL/ADAMS FLD (LIT)

RNP APCH. For uncompensated Baro-VNAV systems, LNAV/VNAV NA below -15°C or above 48°C. Rwy 4L helicopter visibility reduction below 3/4 SM NA. For inop ALS, increase LNAV Cat A and B visibility to RVR 5000. Simultaneous approach authorized. LNAV procedure NA during simultaneous operations. Use of FD or AP required during simultaneous operations.	MALSR 	MISSED APPROACH: Climb to 2900 direct ODXIH and on track 052° to BRAUM and hold.
--	-----------	--

D-ATIS <b>125.65</b>	LITTLE ROCK APP CON <b>135.4 353.6</b>	ADAMS TOWER <b>118.7 257.8</b>	GND CON <b>121.9 339.8</b>	CLNC DEL <b>118.95</b>
-------------------------	---	-----------------------------------	-------------------------------	---------------------------



ELEV 266	<b>D</b> TDZE 258
----------	-------------------



CATEGORY	A	B	C	D
LPV DA		544/40	286 (300-3/4)	
LNAV/VNAV DA		824-1 1/2	566 (600-1 1/2)	
LNAV MDA	780/40	522 (600-3/4)	780/55	522 (600-1)
<b>C</b> CIRCLING	820-1 554 (600-1)	1000-1 734 (800-1)	1180-2 3/4 914 (1000-2 3/4)	1180-3 914 (1000-3)

MIRS Rwy 18-36  
HIRL Rwys 4R-22L and 4L-22R  
TDZ/CL Rwy 22R

SC-1, 28 NOV 2024 to 26 DEC 2024

SC-1, 28 NOV 2024 to 26 DEC 2024